

Limits of Work

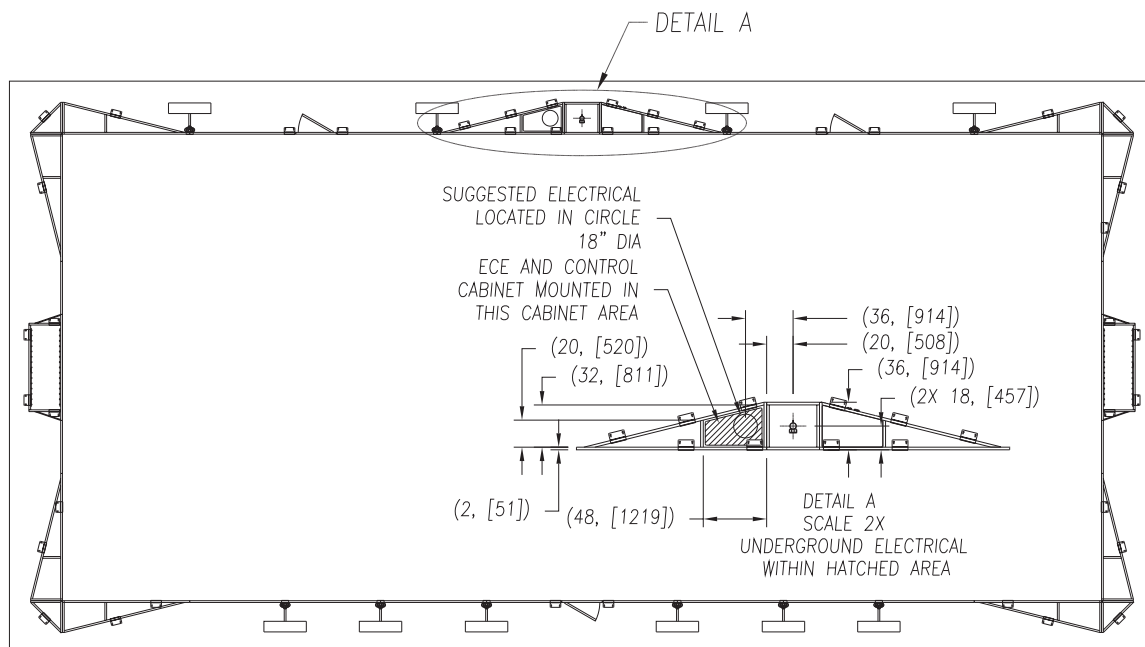


Musco Mini-Pitch System™

Minimum Site Requirements

In order to qualify as a potential Musco Mini-Pitch System building site, you must meet the following minimum requirements.

- Asphalt or concrete pad.
- Pad must be a minimum of 4' (1.22m) longer and 3' (0.91m) wider than what is needed for the Mini-Pitch System. For safety purposes, we recommend 10' (3.05m) longer and 10' (3.05m) wider.
- Pad must be consistent and uniform in grade.
- Pad must not have substantial defects (i.e. wide cracks, heaving, potholes, etc.), or other obstacles (i.e. drains, basketball poles, etc.) on playing surface.
- Pad has to be accessible by telehandler for installation.
- Access to electrical for lighting options.
 - See next page for electrical requirements.



Musco Mini-Pitch System™

Minimum Site Requirements

Electrical Requirements: Two circuits need to be brought to a single point on the mini-pitch (see diagram on the previous page); a 120v control circuit and a lighting circuit. The lighting circuit needs a minimum of 208v single phase, but other options are available.

- 120v control circuit allows the lights to operate and be scheduled. The circuit draws less than an amp. A control transformer can be utilized in certain applications.
- The lighting circuit can be 208v, 240v, 277v, 347v or 480v. The draw on the lighting circuit depends on the voltage (see table below). A single mini-pitch has two lights while a double has four lights. The values in the tables are for a single fixture. All lighting circuits are single-phase.
- A single mini-pitch has one connection point and can be on either sideline.
- A double mini-pitch has poles on both sidelines and will need a feed brought to one sideline. In addition, there must be a conduit between the two poles to feed the second pole—similar to a switch leg.

	200 Vac 50/60 Hz	208 Vac 60 Hz	220 Vac 50/60 Hz	230 Vac 50 Hz	240 Vac 50/60 Hz	277 Vac 60 Hz	347 Vac 60 Hz	380 Vac 50/60 Hz	400 Vac 50 Hz	415 Vac 50 Hz	480 Vac 60 Hz
Max operating current per luminaire	3.32 A	3.19 A	3.02 A	2.89 A	2.77 A	2.40 A	1.92 A	1.75 A	1.66 A	1.60 A	1.39 A

