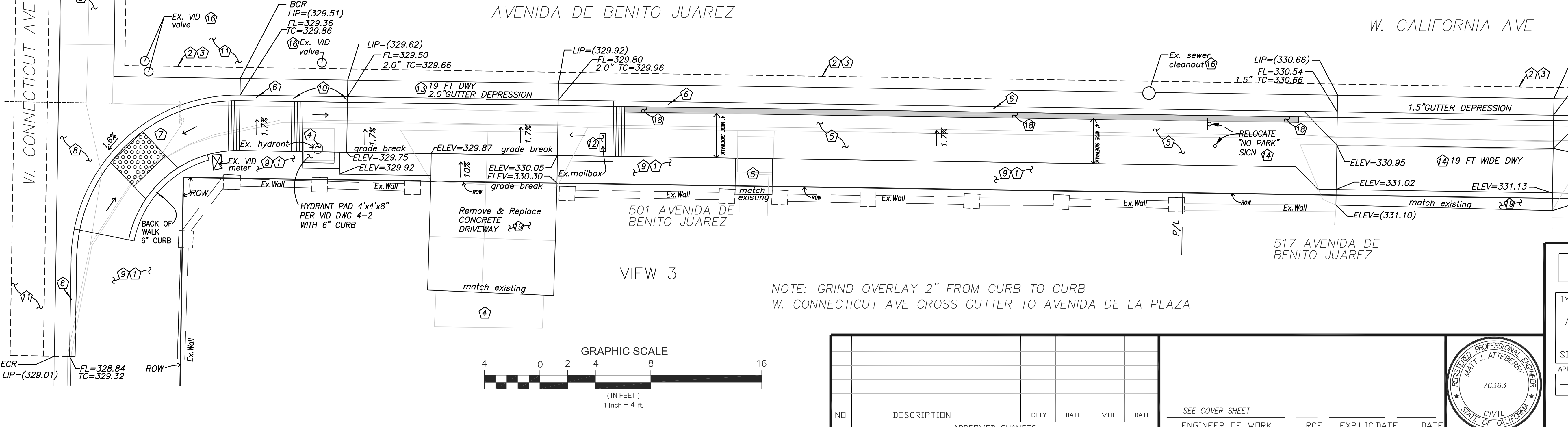
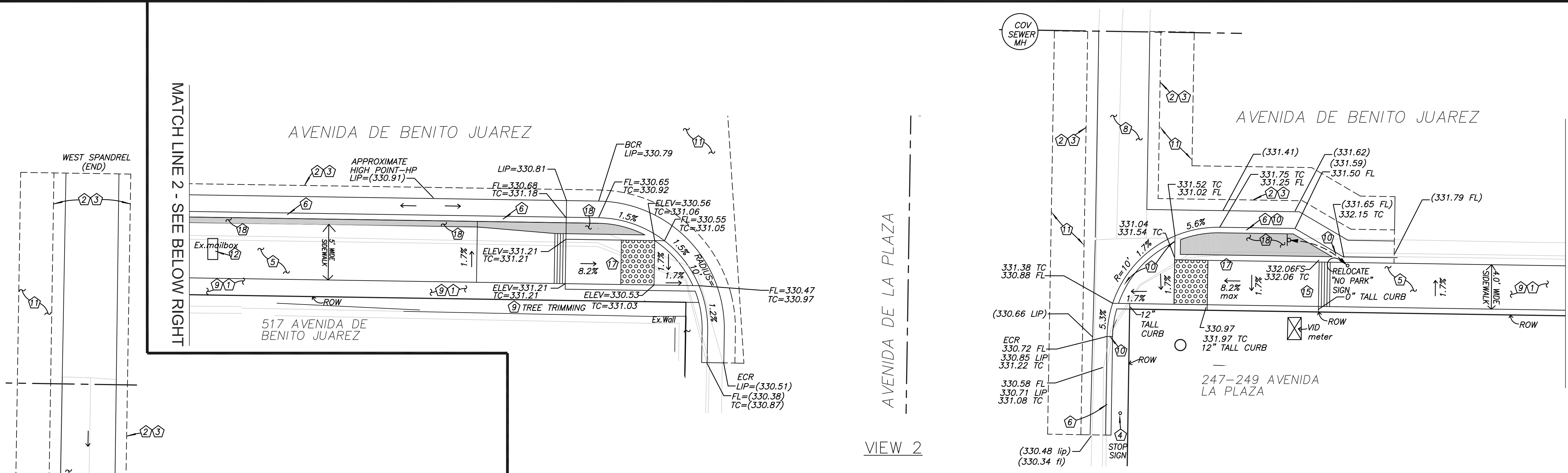
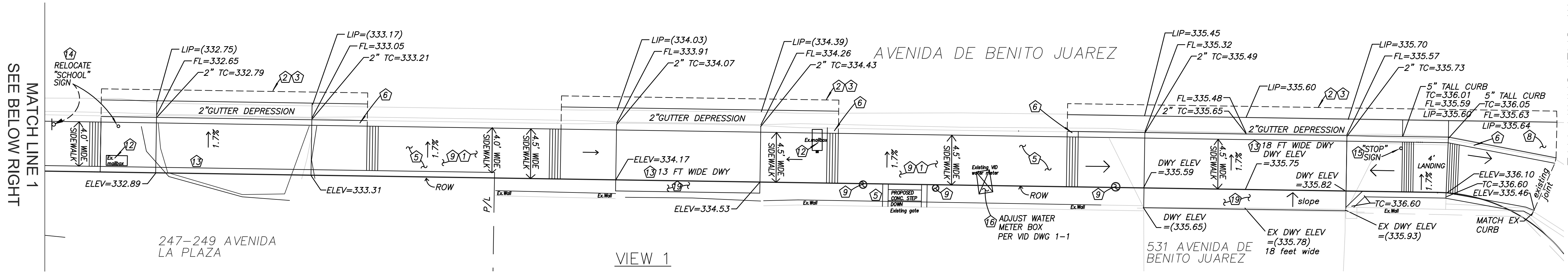
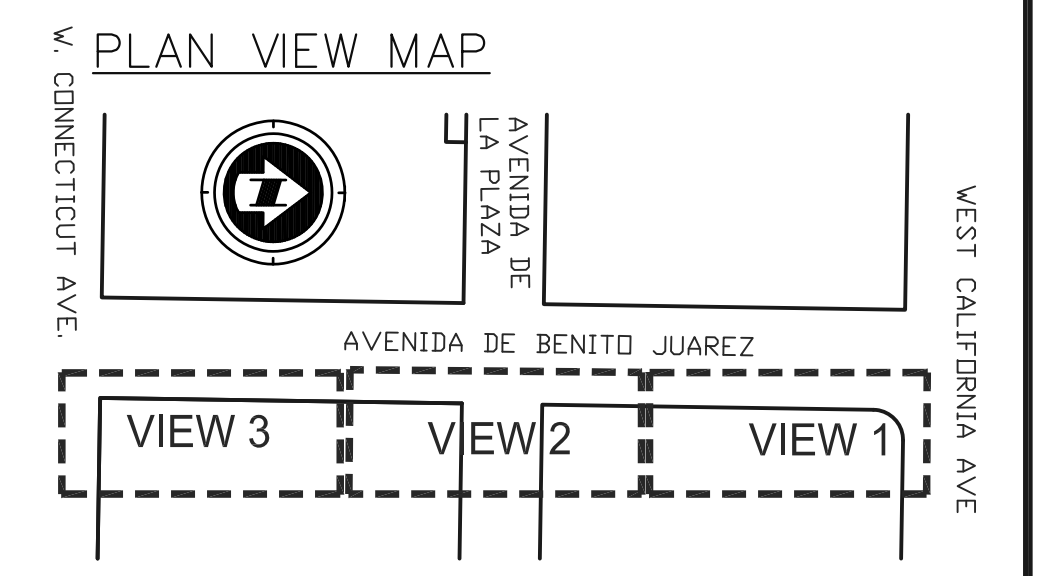


(CIP NO. 8290)

0-4678 |



- WORK TO BE DONE**
- 1 REMOVE EXISTING IMPROVEMENTS ENCRDING IN THE RIGHT OF WAY WHICH INTERFERE WITH PROPOSED IMPROVEMENTS. ADJUST PRIVATE IRRIGATION AND ASSURE WORKING PROPERLY.
 - 2 SAW-CUT A MINIMUM OF 4 INCHES INTO EXISTING A.C. PAVEMENT. DISTANCE FROM EXISTING CURB AND GUTTER SHALL BE ONE FOOT MINIMUM. DISTANCE MAY VARY TO ENSURE ADEQUATE CROSS SLOPE AND GRADE IS MAINTAINED
 - 3 PAVEMENT RESTORATION PER COV SRF-13.
 - 4 PROTECT IN PLACE.
 - 5 CONSTRUCT SIDEWALK PER SDRSD G-7, G-9, G-10, G-11 WIDTH PER PLAN ON 6" AGGREGATE BASE. WITH BACK OF WALK CURB AS NEEDED.
 - 6 REMOVE & REPLACE 6" CONCRETE CURB & GUTTER PER SDRSD G-2 ON 6" AGGREGATE BASE
 - 7 CONSTRUCT CURB RAMP WITH TRUNCATED DOMES PER SDRSD G-29 TYPE C AND BACK OF WALK MONOLITHIC CURB ON 6" AGGREGATE BASE
 - 8 REMOVE & REPLACE CROSS GUTTER PER SDRSD G-12 ON 12" AGGREGATE BASE.
 - 9 CLEAR & GRUB, TREE TRIMMING, MINOR GRADING
 - 10 PAINT RED CURB
 - 11 2" GRIND AND AC OVERLAY
 - 12 REMOVE, REPLACE & ROTATE NEW MAILBOX, COV SRF-04
 - 13 REMOVE & REPLACE CONCRETE DRIVEWAY FOR CONFINED RIGHT OF WAY PER SDRSD G-14D ON 6" AGGREGATE BASE.
 - 14 REMOVE & REPLACE CONCRETE DRIVEWAY TYPE B PER SDRSD G-14F ON 6" AGGREGATE BASE.
 - 15 RELOCATE AND INSTALL SIGN PER COV TRF-06 SIGN POST FOOTING IN HARDSCAPE.
 - 16 ADJUST UTILITY TO PROPOSED GRADE
 - 17 CONSTRUCT CONCRETE CURB RAMP PER SDRSD G-28, TYPE A ON 6" AGGREGATE BASE.
 - 18 PERVIOUS CONCRETE INFILTRATION SWALE, SHEET 1 & 6
 - 19 REMOVE & REPLACE PRIVATE 4" PCC THICK DRIVEWAY ON 6" AGGREGATE BASE.



CITY of VISTA

IMPROVEMENT PLANS FOR: CDBG SIDEWALK AND ADA RAMPS

AVENIDA DE BENITO JUAREZ

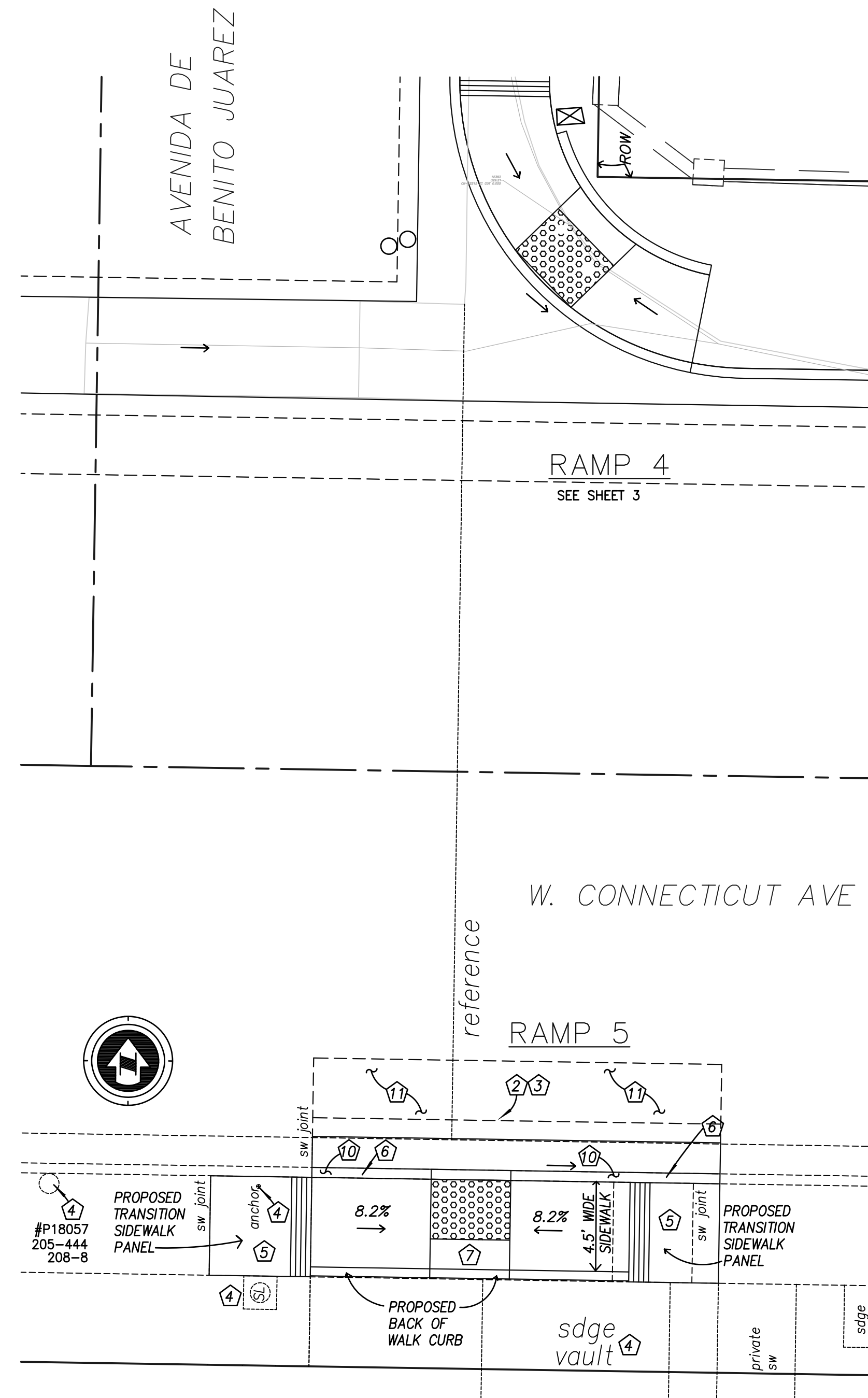
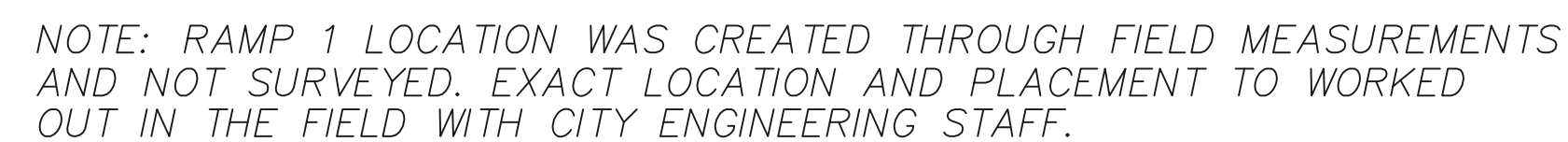
SIDEWALK IMPROVEMENTS SHEET

APPROVED

SEE TITLE SHEET FOR CITY ENGINEER RCE EXPIRES DATE

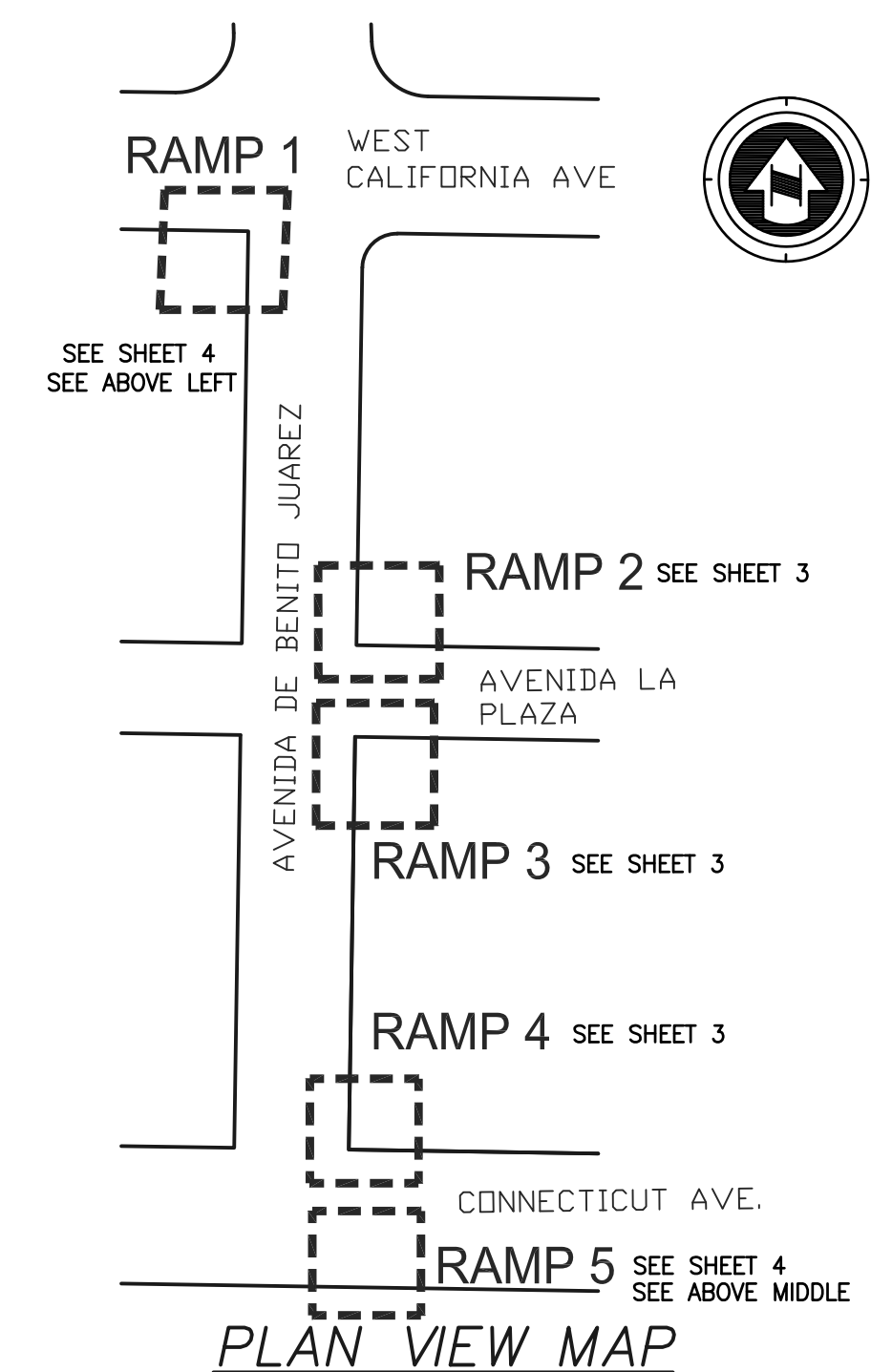
SHEET 3 OF 6

D-4678

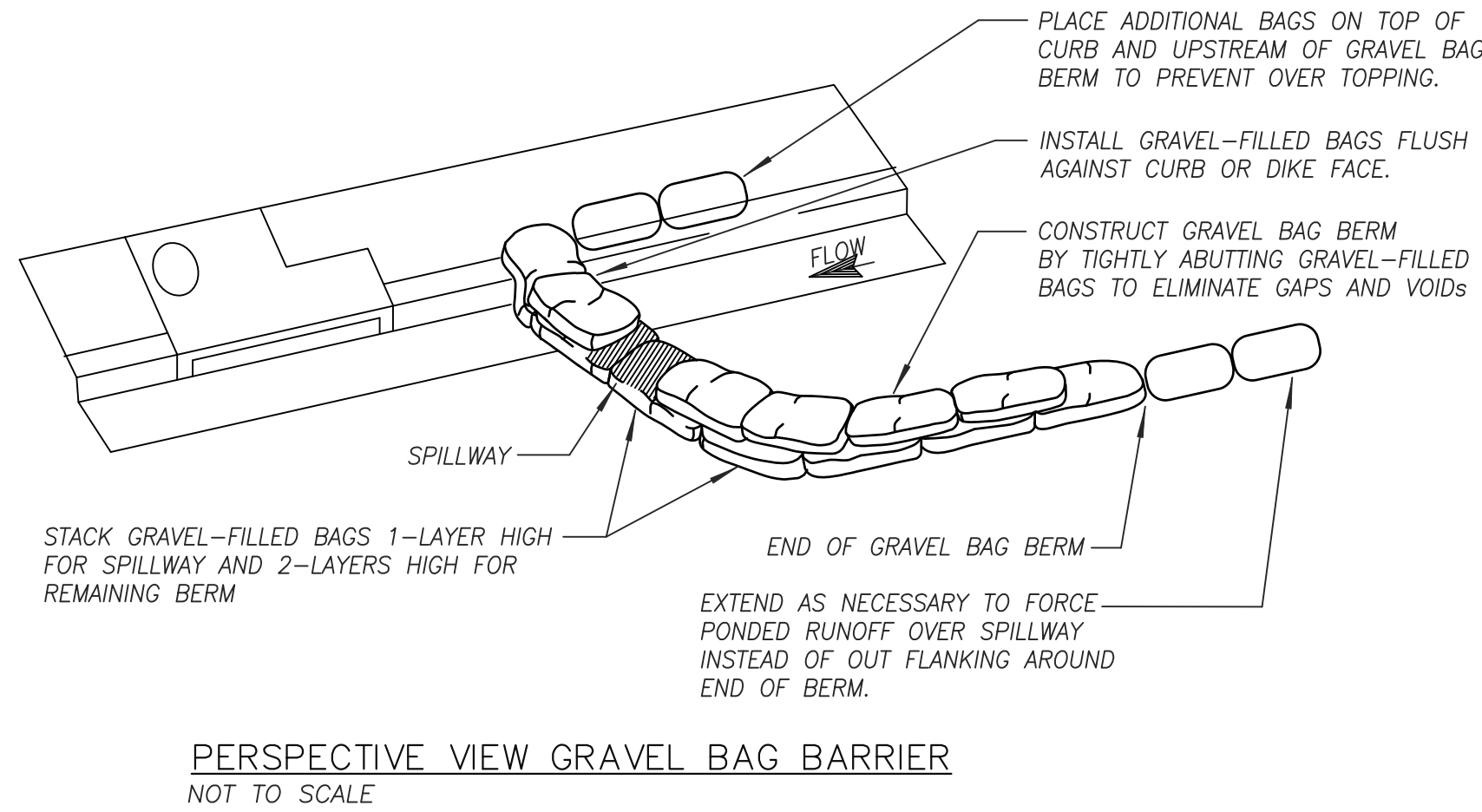
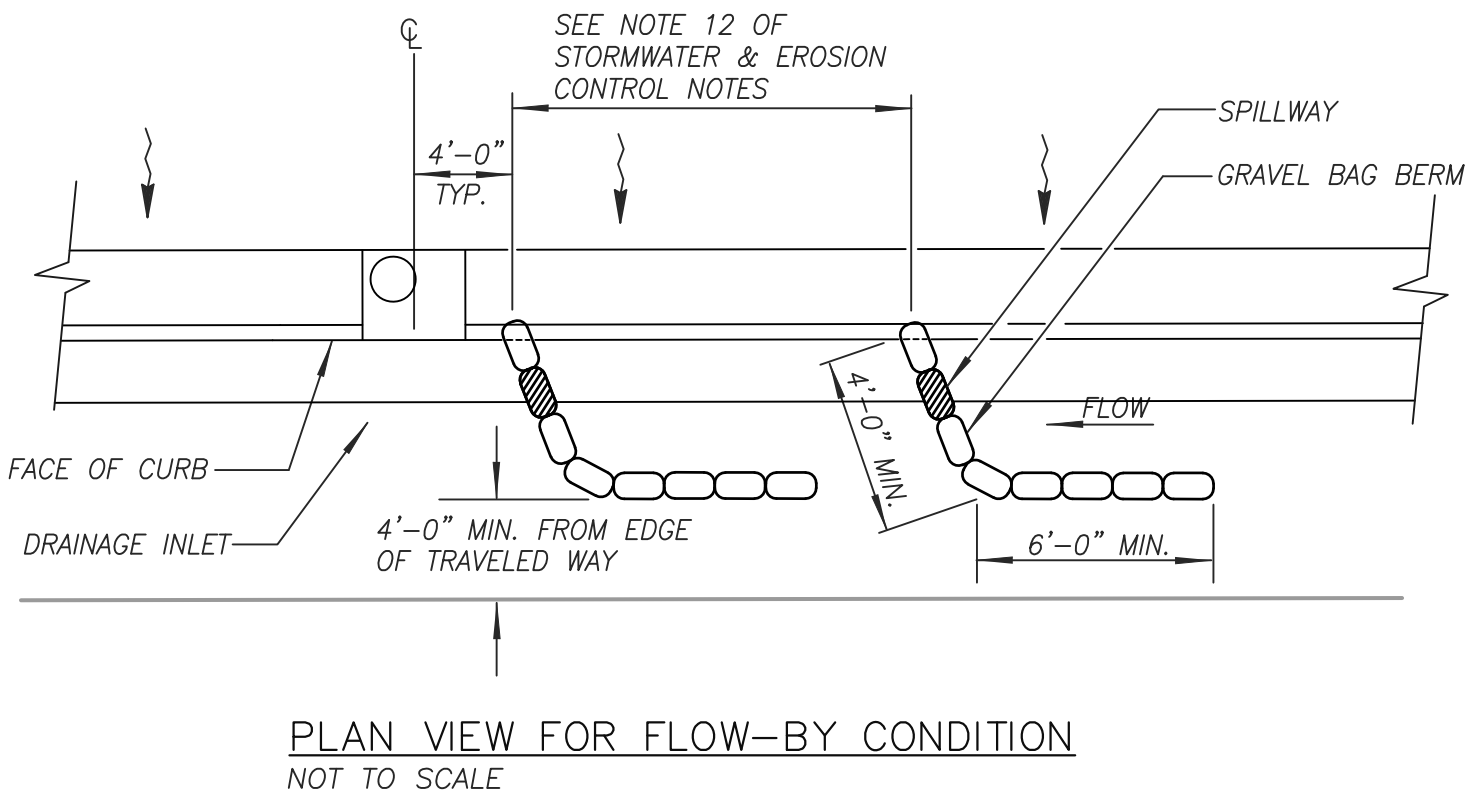
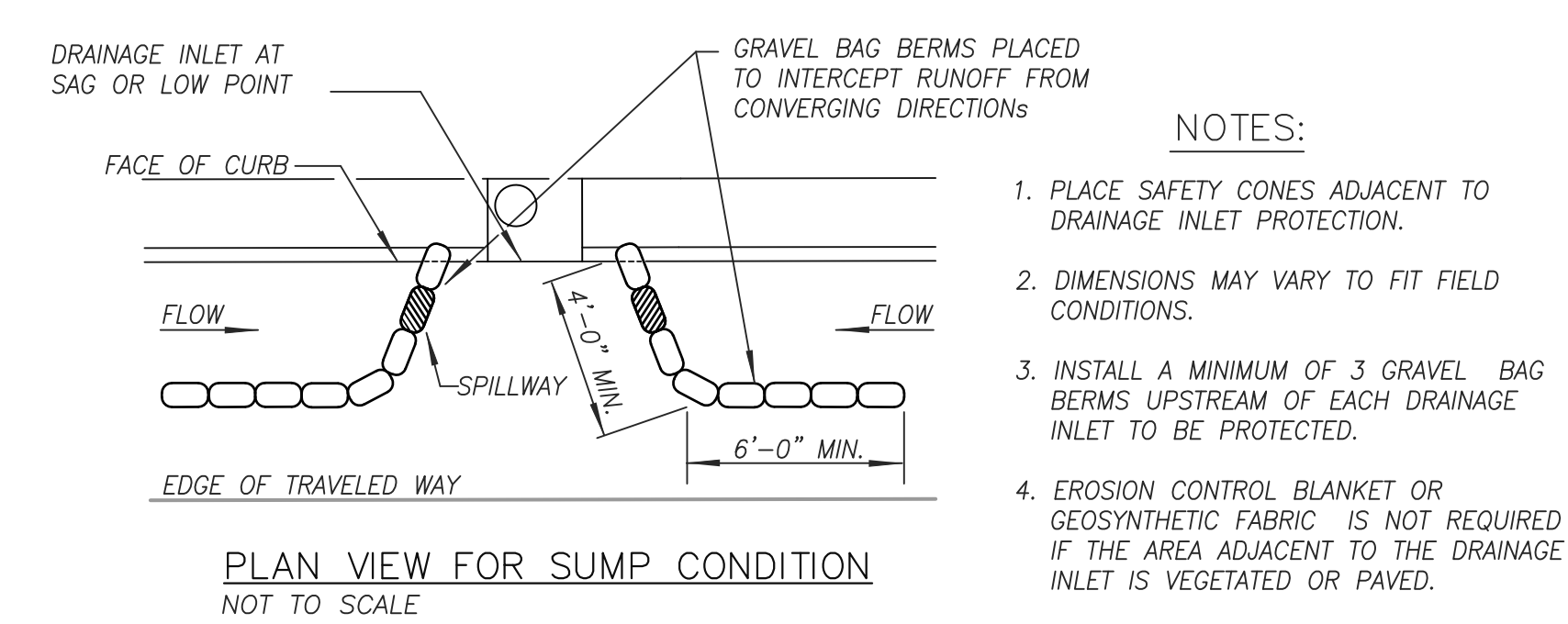


NOTE: RAMP 5 LOCATION WAS CREATED THROUGH FIELD MEASUREMENTS AND NOT SURVEYED. EXACT LOCATION AND PLACEMENT TO WORKED OUT IN THE FIELD WITH CITY ENGINEERING STAFF.

- ① REMOVE EXISTING IMPROVEMENTS ENDOACHING IN THE RIGHT OF WAY WHICH INTERFERE WITH PROPOSED IMPROVEMENTS. ADJUST PRIVATE IRRIGATION AND ASSURE WORKING PROPERLY.
- ② SAW-CUT A MINIMUM OF 4 INCHES INTO EXISTING A.C. PAVEMENT. DISTANCE FROM EXISTING CURB AND GUTTER SHALL BE ONE FOOT MINIMUM. DISTANCE MAY VARY TO ENSURE ADEQUATE CROSS SLOPE AND GRADE IS MAINTAINED
- ③ PAVEMENT RESTORATION PER COV SRF-13.
- ④ PROTECT IN PLACE.
- ⑤ CONSTRUCT SIDEWALK PER SDRSD G-7, G-9, G-10, G-11 WIDTH PER PLAN ON 6" AGGREGATE BASE. WITH BACK OF WALK CURB AS NEEDED.
- ⑥ REMOVE & REPLACE 6" CONCRETE CURB & GUTTER PER SDRSD G-2 ON 6" AGGREGATE BASE
- ⑦ CONSTRUCT CURB RAMP WITH TRUNCATED DOMES PER SDRSD G-29 TYPE C AND BACK OF WALK MONOLITHIC CURB ON 6" AGGREGATE BASE
- ⑧ REMOVE & REPLACE CROSS GUTTER PER SDRSD G-12 ON 12" AGGREGATE BASE.
- ⑨ CLEAR & GRUB, TREE TRIMMING, MINOR GRADING
- ⑩ PAINT RED CURB
- ⑪ 2" GRIND AND AC OVERLAY
- ⑫ REMOVE, REPLACE & ROTATE NEW MAILBOX, COV SRF-04
- ⑬ REMOVE & REPLACE CONCRETE DRIVEWAY FOR CONFINED RIGHT OF WAY PER SDRSD G-14D ON 6" AGGREGATE BASE.
- ⑭ REMOVE & REPLACE CONCRETE DRIVEWAY TYPE B PER SDRSD G-14F ON 6" AGGREGATE BASE.
- ⑮ RELOCATE AND INSTALL SIGN PER COV TRF-06 SIGN POST FOOTING IN HARDSCAPE.
- ⑯ ADJUST UTILITY TO PROPOSED GRADE
- ⑰ CONSTRUCT CONCRETE CURB RAMP PER SDRSD G-28, TYPE A ON 6" AGGREGATE BASE.
- ⑱ PERVIOUS CONCRETE INFILTRATION SWALE, SHEET 1 & 6
- ⑲ REMOVE & REPLACE PRIVATE 4" PCC THICK DRIVEWAY ON 6" AGGREGATE BASE.



WET WEATHER EROSION, SEDIMENT AND DEBRIS CONTROL



GRAVEL BAG PROTECTION FOR CURB, GUTTER AND SIDEWALK REPLACEMENT

DRY WEATHER EROSION, SEDIMENT AND DEBRIS CONTROL

1. CONTRACTOR TO PLACE INLET PROTECTION PER INLET PROTECTION DETAIL (SEE OPTIONS 1, 2 OR 3) LOCATED ON THIS SHEET, WHEN NEEDED AT COMMENCEMENT OF WORK AT EACH INDIVIDUAL LOCATION, ON STREETS INDICATED TO HAVE A GRIND AND OVERLAY. ALL OTHER REQUIRED EROSION CONTROL MEASURES SHALL BE INSTALLED AT THE APPROPRIATE TIME AS DICTATED BY THE CONSTRUCTION SEQUENCE AND THE CITY INSPECTOR.
2. GRAVEL BAG CHECK DAMS TO BE PLACED WITHIN STREET AREAS PER NOTE 12 OF STORMWATER & EROSION CONTROL NOTES LOCATED ON THIS SHEET AND PER DETAIL SHOWN ON THESE PLANS.
3. EROSION CONTROL BMPs SHALL BE INSTALLED AT LOCATIONS AS DESCRIBED IN THE NOTES AND DETAILS AND AT LOCATIONS DETERMINED BY THE INSPECTOR DURING CONSTRUCTION, BASED ON CURRENT FIELD CONDITIONS. CONTRACTOR WILL COORDINATE WITH CITY INSPECTOR TO CLEARLY DEMONSTRATE THE FUNCTIONAL ADEQUACY OF THE EROSION CONTROL FACILITIES.

STORMWATER & EROSION CONTROL NOTES

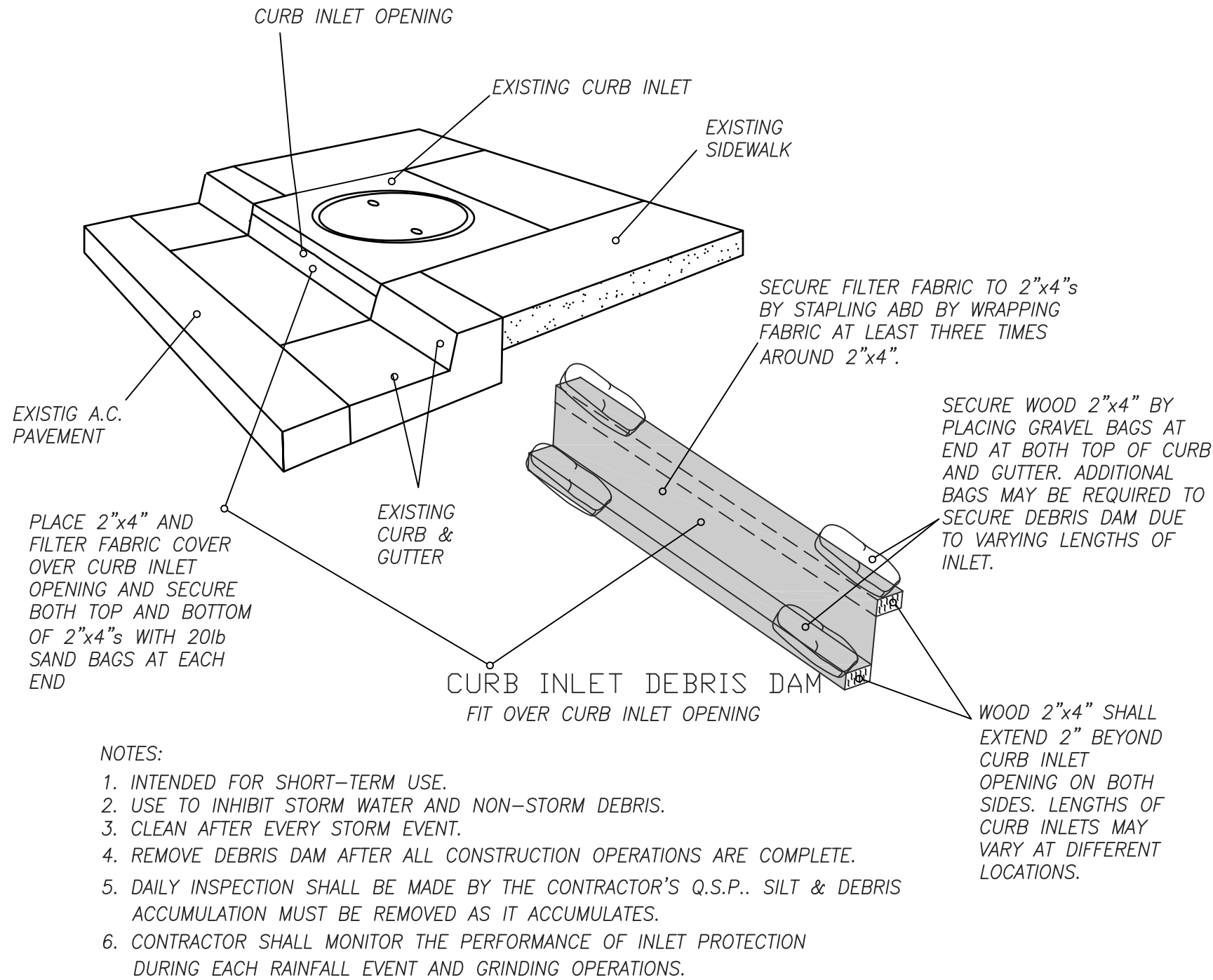
1. THIS IS A STANDARD PROJECT. STORMWATER POST CONSTRUCTION BMP IMPLEMENTATION IS REQUIRED. STORM DRAIN INLET MARKERS AND WATER QUALITY INFILTRATION SWALE WILL BE INSTALLED AS PART OF THIS PROJECT.
2. THIS PROJECT IS SUBJECT TO ALL APPLICABLE GENERAL AND PROJECT SPECIFIC PROHIBITIONS AND REQUIREMENTS IN CHAPTERS 13.18, AND 17.56 OF THE VISTA MUNICIPAL CODE, AND THE CITY STORMWATER STANDARDS MANUAL.
3. BMPs AT MANNED FACILITIES MUST BE INSPECTED BY THE Q.S.P. BEFORE AND FOLLOWING PREDICTED RAIN EVENTS. BMPs AT UNMANNED FACILITIES MUST BE INSPECTED BY THE DISCHARGER REGULARLY DURING THE RAINY SEASON AND PERIODICALLY BETWEEN EACH RAINY SEASON. THESE BMPs MUST BE MAINTAINED SO THAT THEY CONTINUE TO FUNCTION AS DESIGNED. IF THE FAILURE OF A BMP INDICATES THAT THE BMPs IN USE ARE INAPPROPRIATE OR INADEQUATE TO THE CIRCUMSTANCES, THE BMPs MUST BE MODIFIED OR UPGRADED TO PREVENT ANY FURTHER FAILURE IN THE SAME OR SIMILAR CIRCUMSTANCES.
4. IN THE EVENT OF FAILURE OR REFUSAL BY CONTRACTOR TO PROPERLY MAINTAIN BMPs, THE ENGINEER MAY CAUSE EMERGENCY MAINTENANCE WORK TO BE DONE TO PROTECT ADJACENT PRIVATE AND PUBLIC PROPERTY, THE COST (INCLUDING AN INITIAL MOBILIZATION AMOUNT) OF WHICH SHALL BE CHARGED TO THE CONTRACTOR.
5. SEDIMENTATION BASINS AND INLET PROTECTION BMPs MAY NOT BE REMOVED OR MADE INOPERATIVE WITHOUT PRIOR APPROVAL OF THE ENGINEER.
6. TEMPORARY EROSION CONTROL DEVICES SHOWN ON THE EROSION CONTROL PLAN WHICH INTERFERE WITH THE WORK SHALL BE RELOCATED OR MODIFIED AS THE WORK PROGRESSES AS RECOMMENDED BY THE Q.S.D./Q.S.P. AND AS APPROVED BY THE ENGINEER.
7. ALL LOOSE SOIL AND DEBRIS SHALL BE REMOVED FROM THE STREET AREAS UPON STARTING OPERATIONS, AND PERIODICALLY THEREAFTER, AS DIRECTED BY THE INSPECTOR.
8. A 12 INCH HIGH BY 4-FOOT WIDE BERM SHALL BE MAINTAINED ALONG THE TOP OF SLOPE OF THOSE FILLS ON WHICH GRADING IS NOT IN PROGRESS. CONCENTRATED WATER SHALL BE CARRIED NOT CLOSER THAN 10 FEET FROM THE TOP OF SLOPES.
9. STAND-BY CREWS SHALL BE ALERTED BY THE CONTRACTOR's, Q.S.P. FOR EMERGENCY WORK DURING RAINSTORMS.
10. ALL UTILITY TRENCHES SHALL BE BACKFILLED WITHIN 24 HOURS AND MUST BE BACKFILLED BEFORE THE END OF THE WORK DAY IF A 40% CHANCE OF RAIN IS PREDICTED.
11. ALL BUILDING PADS SHALL BE SLOPED TOWARDS THE DRIVEWAY AND VELOCITY CHECK DAMS PROVIDED AT THE BASE OF ALL DRIVEWAYS DRAINING INTO THE STREET. VELOCITY CHECK DAMS SHALL BE PROVIDED ACROSS THE OUTLETS OF ALL LOTS DRAINING INTO THE STREET.
12. PROVIDE VELOCITY CHECK DAMS IN ALL STREET AREAS, PAVED OR UNPAVED, AT THE INTERVALS INDICATED BELOW. VELOCITY CHECK DAMS MAY BE CONSTRUCTED OF GRAVELBAGS, TIMBER, OR OTHER EROSION RESISTANT MATERIALS APPROVED BY THE ENGINEER, AND SHALL EXTEND ACROSS THE STREET OR CHANNEL AT RIGHT ANGLES TO THE CENTERLINE FOR A DISTANCE SUFFICIENT TO PREVENT SEDIMENT FROM ENTERING STORM DRAIN. EARTHEN DIKES MAY NOT BE USED AS VELOCITY CHECK DAMS.

STREET GRADE	CHECK DAM INTERVAL
LESS THAN 2%	AS REQUIRED
2% TO 4%	100 FEET
4% TO 10%	50 FEET
OVER 10%	25 FEET

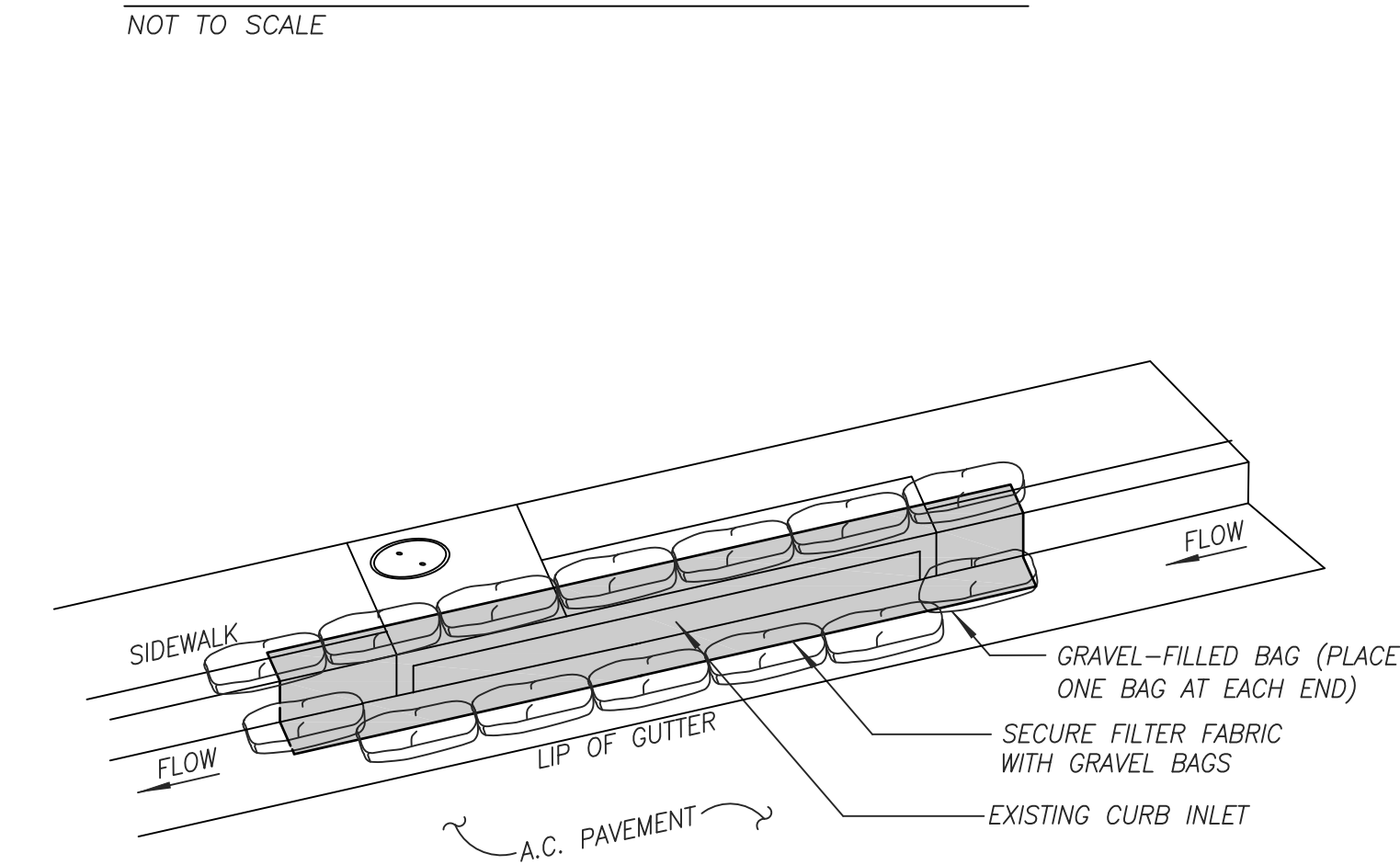
13. PROVIDE VELOCITY CHECK DAMS IN ALL UNPAVED GRADED CHANNELS AT THE INTERVALS INDICATED BELOW UNLESS CHANNELS ARE LINED WITH TEMPORARY MATERIALS SUCH AS PLASTIC SHEETING.

CHANNEL GRADE	CHECK DAM INTERVAL
LESS THAN 3%	100 FEET
3% TO 6%	50 FEET
OVER 6%	25 FEET

14. A GRAVELBAG SILT BASIN, OR SILT TRAP, SHALL BE PROVIDED AT EVERY STORM DRAIN INLET TO PREVENT SEDIMENT FROM ENTERING THE STORM DRAIN SYSTEM.
15. A GUARD SHALL BE POSTED ON SITE WHENEVER THE DEPTH OF WATER IN ANY BMP EXCEEDS TWO FEET.
16. ALL REMOVABLE PROTECTION DEVICES SHOWN SHALL BE IN PLACE DURING ALL OPERATIONS THAT GENERATE POLLUTANTS AND AT THE END OF EACH WORKING DAY, AFTER EACH RAINSTORM EXCEEDING 1/8 INCH IN A 12 HOUR PERIOD, SILT AND DEBRIS SHALL BE REMOVED FROM CHECK DAMS AND DESILTING BASINS, AND BASINS SHALL BE PUMPED DRY.
17. EFFECTIVE PLANTING SHALL BE INSTALLED, FULLY GERMINATED, AND SHALL EFFECTIVELY COVER THE REQUIRED SLOPES PRIOR TO FINAL APPROVAL. THE PLANTING MIX SHALL BE APPROVED BY THE ENGINEER PRIOR TO INSTALLATION. SPRINKLER SYSTEMS ARE REQUIRED ON ALL SLOPES OVER FIVE FEET IN HEIGHT. TEMPORARY SPRINKLER SYSTEMS WILL BE REQUIRED ON ALL SLOPES UNTIL PLANTING IS ESTABLISHED, AND MAY NOT BE REMOVED WITHOUT PRIOR APPROVAL OF THE ENGINEER.
18. GRAVEL BAGS AND NECESSARY MATERIALS SHALL BE AVAILABLE ON SITE AND STOCKPILED AT CONVENIENT LOCATIONS TO FACILITATE RAPID CONSTRUCTION OF TEMPORARY DEVICES OR TO REPAIR ANY DAMAGED EROSION CONTROL MEASURES, WHEN RAIN IS IMMINENT. A STANDBY CREW SHALL BE MADE AVAILABLE AT ALL TIMES DURING THE RAINY SEASON.
19. ANY PROPOSED ALTERNATE EROSION CONTROL MEASURES ARE TO BE RECOMMENDED BY THE CONTRACTOR'S Q.S.P. FOR APPROVAL BY THE ENGINEER, PRIOR TO INSTALLATION.
20. FROM OCTOBER 1ST THROUGH APRIL 30TH OF EACH YEAR, CHAPTER 17.56 REQUIRES THAT ALL SLOPE FACES BE PROTECTED FROM EROSION, AND THAT ALL SEDIMENT BE KEPT ON SITE. THE USE OF INDUSTRY STANDARD SLOPE PROTECTION AND SEDIMENT CONTROL METHODS ARE REQUIRED TO BE IN PLACE AND MAINTAINED 24 HOURS A DAY/7 DAYS A WEEK.
21. MATERIALS WITH THE POTENTIAL TO POLLUTE URBAN RUN-OFF SHALL BE USED WITH AND IN ACCORDANCE WITH LABEL DIRECTIONS. THESE MATERIALS AND OTHER WASTE SHALL BE STORED IN A MANNER THAT EITHER PREVENTS CONTACT WITH RAINFALL OR RETAINS CONTAMINATED RUN-OFF FOR TREATMENT AND DISPOSAL.
22. THE CONTRACTOR DESIGNATED 24-HOUR TELEPHONE NUMBER AND THE NAME(S) OF THE PERSON(S) RESPONSIBLE FOR EMERGENCY WORK SHALL BE PROVIDED TO THE OWNER AND SHALL AT ALL TIMES BE POSTED IN A CONSPICUOUS PLACE ONSITE TO FACILITATE PUBLIC REPORTING OF PROBLEMS. (A TELEPHONE ANSWERING MACHINE OR ANSWERING SERVICE IS UNACCEPTABLE.)
23. CONTRACTOR TO IMPLEMENT AND MAINTAIN ONSITE AT ALL TIMES A STORMWATER MANAGEMENT PLAN (SWMP) OR STORMWATER POLLUTION PREVENTION PLAN (SWPPP) IN CITY APPROVED FORMAT WHICH IS HEREBY INCORPORATED WITH THESE PLANS BY REFERENCE. SAID PLAN SHALL BE KEPT CURRENT AND REFLECTIVE OF CURRENT SITE CONDITIONS.

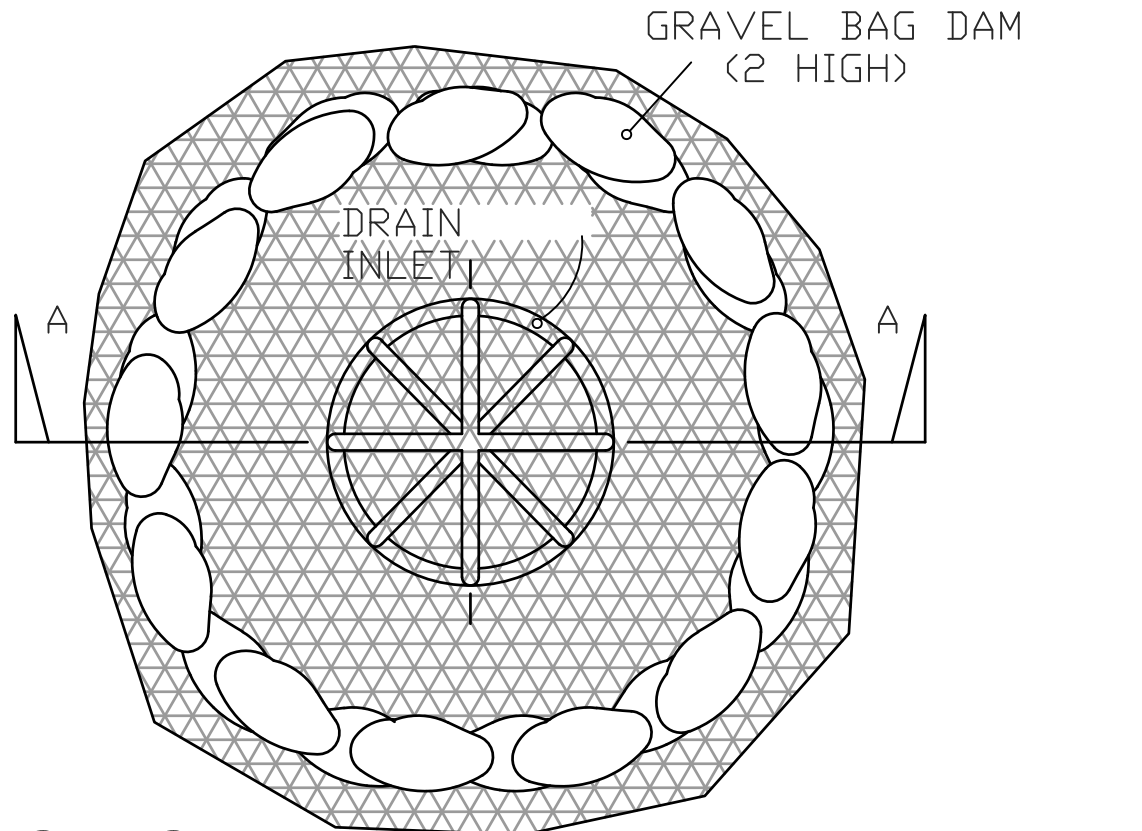
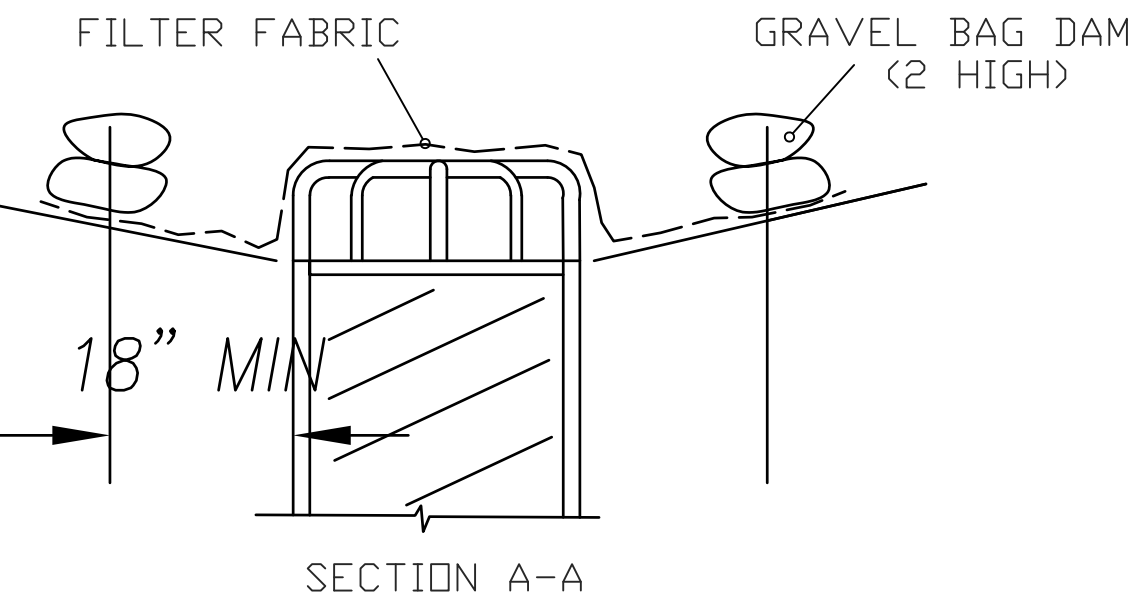
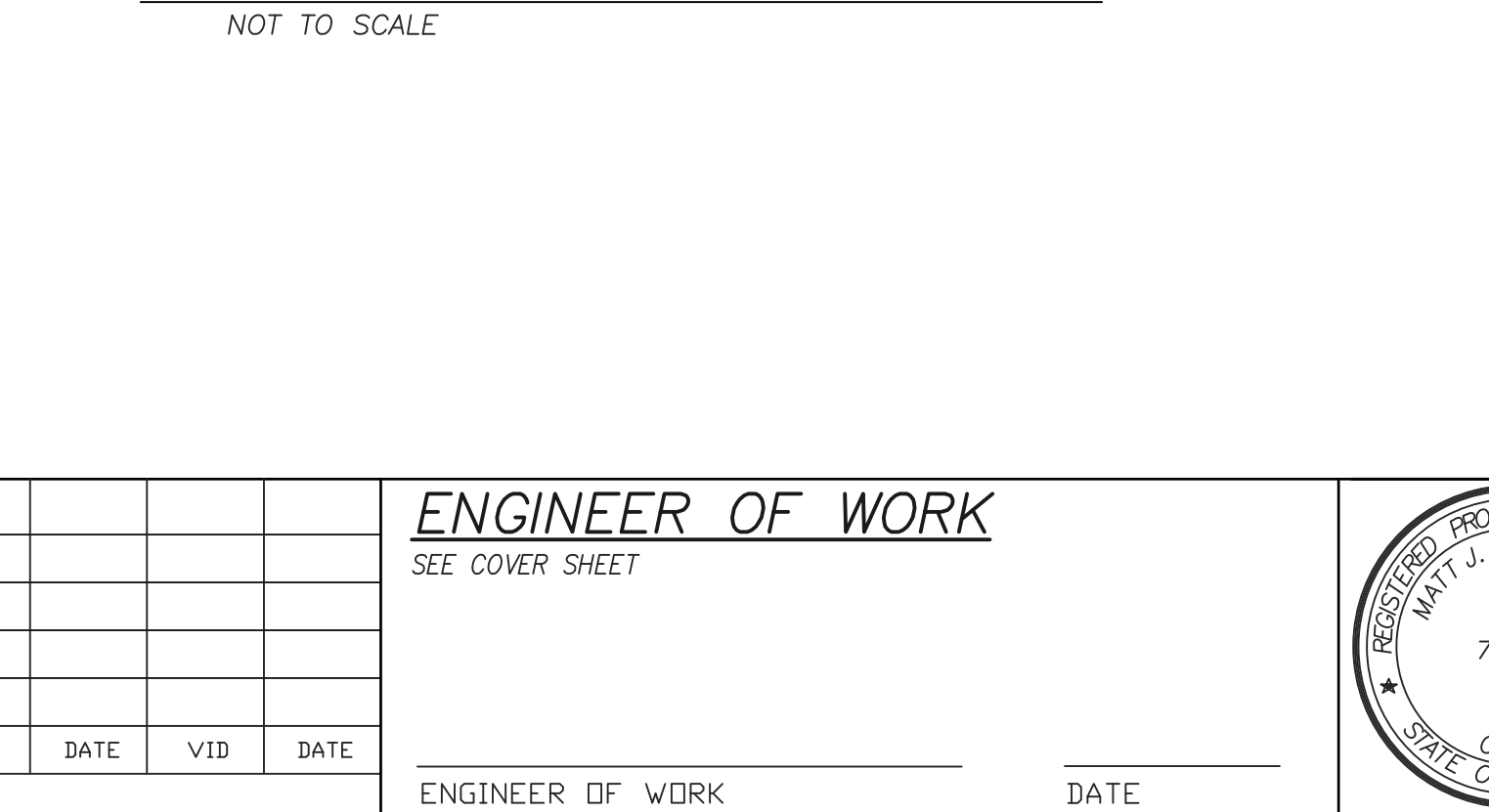


OPTION 2
DEBRIS INLET PROTECTION DETAIL



1. INTENDED FOR SHORT-TERM USE.
2. PLACE GRAVEL BAGS WITHIN GUTTER OUTSIDE OF A.C. PAVEMENT AND ON TOP OF CURB
3. USE TO INHIBIT STORM WATER AND NON-STORM DEBRIS.
4. CLEAN AFTER EVERY STORM EVENT.
5. REMOVE DEBRIS DAM AFTER ALL CONSTRUCTION OPERATIONS ARE COMPLETE.
6. DAILY INSPECTION SHALL BE MADE BY THE CONTRACTOR'S Q.S.P.. SILT & DEBRIS ACCUMULATION MUST BE REMOVED AS IT ACCUMULATES.
7. CONTRACTOR SHALL MONITOR THE PERFORMANCE OF INLET PROTECTION DURING EACH RAINFALL EVENT AND GRINDING OPERATIONS.

OPTION 3
DEBRIS INLET PROTECTION DETAIL



OPTION 3
DEBRIS INLET PROTECTION DETAIL

STORMWATER PROTECTION NOTES

RAIN, DURING THE RAINY SEASON THE AMOUNT OF EXPOSED SOIL ALLOWED AT ONE TIME SHALL NOT EXCEED THAT WHICH CAN BE ADEQUATELY PROTECTED IN THE EVENT OF A RAINSTORM. 125% OF ALL SUPPLIES NEEDED FOR BMP MEASURES SHALL BE RETAINED ON THE JOB SITE IN A MANNER THAT ALLOWS FULL DEPLOYMENT AND COMPLETE INSTALLATION IN 48 HOURS OR LESS WHEN THERE IS A FORECAST

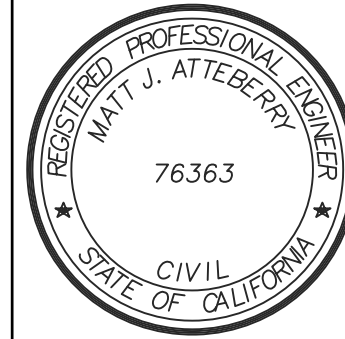
THE CONTRACTOR IS OBLIGATED TO INSURE COMPLIANCE WITH ALL APPLICABLE STORMWATER REGULATIONS AT ALL TIMES. THE BMPs (BEST MANAGEMENT PRACTICES) THAT HAVE BEEN INCORPORATED INTO THIS PLAN SHALL BE IMPLEMENTED AND MAINTAINED TO EFFECTIVELY PREVENT THE POTENTIALLY NEGATIVE IMPACTS OF THIS PROJECT'S CONSTRUCTION ACTIVITIES ON STORMWATER QUALITY. THE MAINTENANCE OF THE BMPs IS THE CONTRACTOR'S RESPONSIBILITY, AND FAILURE TO PROPERLY INSTALL OR MAINTAIN THE BMPs MAY RESULT IN ENFORCEMENT ACTION BY THE CITY OF VISTA OR OTHERS. IF INSTALLED BMPs FAIL, THEY MUST BE REPAIRED OR REPLACED WITH AN ACCEPTABLE ALTERNATIVE WITHIN 24 HOURS, OR AS SOON AS SAFE TO DO SO.

CITY of VISTA

IMPROVEMENT PLANS FOR: CDBG SIDEWALK AND ADA RAMPS	
AVENIDA DE BENITO JUAREZ	
EROSION CONTROL NOTES AND DETAILS	
APPROVED	SHEET 5 OF 6
CITY ENGINEER: SEE TITLE SHEET	DATE: _____
D-4678	

ENGINEER OF WORK

SEE COVER SHEET



ENGINEER OF WORK

DATE

SWPPP NOTES

1. DISCHARGING SEDIMENT--LADEN WATER WHICH WILL CAUSE OR CONTRIBUTE TO AN EXCEEDANCE OF THE APPLICABLE RWQCB'S BASIN PLANS FROM A DOWATERING SITE OR SEDIMENT BASIN/TRAP INTO ANY RECEIVING WATER OR STORM DRAIN WITHOUT FILTRATION OR EQUIVALENT TREATMENT IS PROHIBITED.
2. THE DISCHARGER SHALL AMEND THE SWPPP WHENEVER THERE IS A CHANGE IN CONSTRUCTION OR OPERATIONS, WHICH MAY AFFECT THE DISCHARGE OF POLLUTANTS TO SURFACE WATERS, GROUNDWATERS, OR A MUNICIPAL STORM DRAIN SYSTEM. THE SWPPP SHALL ALSO BE AMENDED IF THE DISCHARGER VIOLATES ANY CONDITION OF THE GENERAL PERMIT OR HAS NOT ACHIEVED THE GENERAL OBJECTIVE OF REDUCING OR ELIMINATING POLLUTANTS IN STORMWATER DISCHARGES. ALL AMENDMENTS SHOULD BE DATED AND DIRECTLY ATTACHED TO THE SWPPP.
3. TEMPORARY ON--SITE DRAINAGES TO CARRY CONCENTRATED FLOW SHALL BE SELECTED TO COMPLY WITH CITY REQUIREMENTS TO CONTROL EROSION, TO RETURN FLOWS TO THEIR NATURAL DRAINAGE COURSES, AND TO PREVENT DAMAGE TO DOWNSTREAM PROPERTIES.
4. DISCHARGES ORIGINATING FROM OFF--SITE, FLOWING ACROSS OR THROUGH AREAS DISTURBED BY CONSTRUCTION MAY CONTAIN POLLUTANTS, AND SHOULD BE REPORTED TO THE RWQCB.
5. DISCHARGERS WHO ARE CURRENTLY COVERED UNDER NPDES GENERAL PERMIT NO. CAS000002 FOR DISCHARGE OF STORM WATER ASSOCIATED WITH CONSTRUCTION ACTIVITY MAY SUBMIT A NOTICE OF TERMINATION WHEN THEY MEET ONE OF THE FOLLOWING CRITERIA:

A. THE CONSTRUCTION PROJECT HAS BEEN COMPLETED AND THE FOLLOWING CONDITIONS HAVE BEEN MET:

1) ALL ELEMENTS OF THE STORMWATER POLLUTION PREVENTION PLAN HAVE BEEN COMPLETED;

2) CONSTRUCTION MATERIALS AND EQUIPMENT MAINTENANCE WASTE HAVE BEEN DISPOSED OF PROPERLY;

3) THE SITE IS IN COMPLIANCE WITH ALL LOCAL STORM WATER MANAGEMENT REQUIREMENTS INCLUDING EROSION/SEDIMENT CONTROL REQUIREMENTS AND THE APPROPRIATE USE PERMITS HAVE BEEN OBTAINED;

4) A POST--CONSTRUCTION STORM WATER OPERATION AND MANAGEMENT PLAN IS IN PLACE.

B. CONSTRUCTION ACTIVITIES HAVE BEEN SUSPENDED, EITHER TEMPORARILY OR INDEFINITELY AND THE FOLLOWING CONDITIONS HAVE BEEN MET:

1) ALL ELEMENTS OF THE STORMWATER POLLUTION PREVENTION PLAN HAVE BEEN COMPLETED;

2) CONSTRUCTION MATERIALS AND EQUIPMENT MAINTENANCE WASTE HAVE BEEN DISPOSED OF PROPERLY;

3) ALL DEVLOPED AREAS AND OTHER AREAS OF POTENTIAL EROSION ARE STABILIZED;

4) AN OPERATION AND MAINTENANCE PLAN FOR EROSION AND SEDIMENT CONTROL IS IN PLACE;

5) THE SITE IS IN COMPLIANCE WITH ALL LOCAL STORM WATER MANAGEMENT REQUIREMENTS INCLUDING EROSION/SEDIMENT CONTROL REQUIREMENTS.

THE DATE CONSTRUCTION ACTIVITIES WERE SUSPENDED, AND THE EXPECTED DATE CONSTRUCTION ACTIVITIES WILL RESUME SHOULD BE PROVIDED.

C. CONSTRUCTION SITES CAN NOT DISCHARGE STORM WATER TO WATERS OF THE UNITED STATES. PLEASE INDICATE IF ALL STORM WATER IS RETAINED ON SITE OR IF STORM WATER IS COLLECTED OFFSITE.

D. DISCHARGE OF CONSTRUCTION STORM WATER FROM THE SITE IS NOW SUBJECT TO ANOTHER NPDES GENERAL PERMIT OR AN INDIVIDUAL NPDES PERMIT. THE GENERAL PERMIT OR INDIVIDUAL PERMIT NPDES NUMBER AND DATE COVERAGE BEGAN SHALL BE PROVIDED.

E. THERE IS A NEW OWNER OF THE IDENTIFIED SITE. IF OWNERSHIP OR OPERATION OF THE FACILITY HAS BEEN TRANSFERRED THEN THE PREVIOUS OWNER MUST SUBMIT A NOTICE OF TERMINATION AND THE NEW OWNER MUST SUBMIT A NOTICE OF INTENT FOR COVERAGE UNDER THE GENERAL PERMIT. THE DATE OF TRANSFER AND INFORMATION ON THE NEW OWNER SHALL BE PROVIDED. NOTE THAT THE PREVIOUS OWNER MAY BE LIABLE FOR DISCHARGE FROM THE SITE UNTIL THE NEW OWNER FILES A NOTICE OF INTENT FOR COVERAGE UNDER THE GENERAL PERMIT.
6. SEDIMENT CONTROL BMP'S ARE REQUIRED AT APPROPRIATE LOCATIONS ALONG THE SITE PERIMETER AND AT ALL OPERATIONAL INTERNAL INLETS TO THE STORM DRAIN SYSTEM AT ALL TIMES.
7. THE CONTRACTOR IS RESPONSIBLE FOR ENSURING THAT ADEQUATE SEDIMENT CONTROL MATERIALS ARE AVAILABLE TO CONTROL SEDIMENT DISCHARGES AT THE DOWNGRADE PERIMETER AND OPERATIONAL INLETS (WEATHER AND STORM PREDICTIONS CAN BE OBTAINED BY CALLING THE NATIONAL WEATHER SERVICE AT (858) 675--8700 OR BY VISITING THE NATIONAL WEATHER SERVICE WEB SITE AT HTTP://WWW.WRH.NOAA.GOV/SANDIEGO/INDEX.SHTML FOR WEATHER INFORMATION AND CURRENT SATALITE/RADAR FEEDS).
8. THE OUTLETS OF ALL SEDIMENT BASINS, TRAPS, AND LOCATIONS OF ARTIFICIALLY CONCENTRATED FLOW SHALL BE PROVIDED WITH OUTLET PROTECTION TO PREVENT EROSION AND SCOUR.
9. INSPECTIONS SHALL BE PERFORMED BEFORE AND AFTER STORM EVENTS AND ONCE EACH 24--HOUR PERIOD DURING EXTENDED STORM EVENTS TO IDENTIFY BMP EFFECTIVENESS AND IMPLEMENT REPAIRS OR DESIGN CHANGES AS FEASIBLE, DEPENDING ON FIELD CONDITIONS. EQUIPMENT, MATERIALS, AND WORKERS MUST BE AVAILABLE FOR RAPID RESPONSE TO FAILURES AND EMERGENCIES. ALL CORRECTIVE MAINTENANCE TO BMP'S SHALL BE PERFORMED AS SOON AS POSSIBLE AFTER THE CONCLUSION OF EACH STORM, DEPENDING UPON WORKER SAFETY.
10. FOR EACH INSPECTION, A QUALIFIED PERSON SHALL COMPLETE AN INSPECTION CHECKLIST CONTAINING THE FOLLOWING MINIMUM INFORMATION; INSPECTION DATE, WEATHER INFORMATION (BEGINNING/END OF STORM EVENT, DURATION, TIME SINCE LAST STORM, APPROXIMATE RAINFALL IN INCHES), DESCRIPTION OF INADEQUATE BMP'S, LIST OF OBSERVATIONS OF ALL BMP'S AND VISIBLE INSPECTION OF OUTFALLS, DISCHARGE POINTS, DOWNSTREAM LOCATIONS, AND PROTECTED REQUIRED MAINTENANCE ACTIVITIES, CORRECTIVE ACTIONS REQUIRED, INCLUDING CHANGES TO THE SWPPP AND IMPLEMENTATION DATES, INSPECTOR'S NAME, TITLE, SIGNATURE, AND QUALIFICATIONS.
11. INDIVIDUALS RESPONSIBLE FOR SWPPP, IMPLEMENTATION, AND PERMIT COMPLIANCE SHALL BE APPROPRIATELY TRAINED. THIS INCLUDES THOSE PERSONNEL RESPONSIBLE FOR INSTALLATION, INSPECTION, MAINTENANCE, AND REPAIR OF BMP'S. THOSE RESPONSIBLE FOR OVERSEEING, REVISING, AND AMENDING THE SWPPP SHALL ALSO DOCUMENT THEIR TRAINING. THE QUALIFIED PERSON SHALL ATTEND THE PRE--CONSTRUCTION MEETING. THE QUALIFIED PERSON SHALL HAVE KNOWLEDGE AND TRAINING OF THE INTENT AND ENFORCEMENT OF SWPPP'S AND BMP'S AND BE PROPERLY TRAINED TO CONDUCT INSPECTIONS AND PREPARE REPORTS OF THE CONSTRUCTION SITE WITH RESPECT TO THE CITY'S MUNICIPAL CODE/ORDINANCES AND THE SWPPP.
12. THE CONTRACTOR SHALL MAINTAIN A COPY OF THE SWPPP AT THE CONSTRUCTION SITE WHICH SHALL BE PROVIDED, UPON REQUEST, TO THE RWQCB OR CITY PERSONEL. THE SWPPP IS CONSIDERED A REPORT THAT SHALL BE AVAILABLE TO THE PUBLIC BY THE RWQCB UNDER SECTION 306(B) OF THE CLEAN WATER ACT.

NOTE:

STATIONING FOR STREET AND SIDEWALK IMPROVEMENTS ARE MEASURED ALONG THE RIGHT--OF--WAY CENTERLINE STATIONING.

SWPPP NOTES (cont"d)

13. RECORDS OF ALL INSPECTIONS, COMPLIANCE CERTIFICATIONS, NONCOMPLIANCE REPORTING, AND ANY OTHER DOCUMENTS GENERATED AS PART OF SWPPP, MUST BE RETAINED BY THE OWNER FOR A PERIOD OF AT LEAST THREE YEARS FROM THE DATE GENERATED.
14. A CONCRETE WASHOUT SHALL BE INSTALLED FOR ALL PROJECTS THAT PROPOSE CONCRETE TO BE MIXED ON SITE OR DELIVERED FROM A BATCH PLANT. THE CONCRETE WASHOUT SHALL BE LOCATED A MINIMUM OF 50' FROM ANY DRAINAGE INFRASTRUCTURE OR NATURAL DRAINAGE FEATURES OR WATER BODIES AND INCORPORATE AN IMPERMEABLE LINER (6 MIL MIN.) TO CONTAIN THE REQUIRED VOLUME. ALL DRIED CONCRETE WASTE SHALL BE BROKEN INTO MANAGEABLE PIECES AND DISPOSED OF IN A PROPER MANNER. THE CONTRACTOR OR QUALIFIED PERSON SHALL LOCATE CONCRETE WASHOUTS IN THIS PRESCRIBED MANNER AS CONSTRUCTION PROGRESSES.
15. THE QUALIFIED PERSON SHALL CONDUCT REGULAR INSPECTIONS OF THE PROJECT SITE IN ACCORDANCE WITH RECOMMENDATIONS OUTLINED IN THE SWPPP. EACH INSPECTION SHALL BE DOCUMENTED IN THE FORM OF WRITTEN REPORTS RETAINED ON--SITE. ALL REPORTS SHALL BE MADE AVAILABLE TO THE CITY OF SAN DIEGO AND RWQCB REPRESENTATIVES UPON REQUEST.
16. THE CONTRACTOR SHALL HAVE EMERGENCY MATERIALS AND EQUIPMENT ON HAND FOR UNFORESEEN SITUATIONS, SUCH AS DAMAGE TO UNDERGROUND WATER AND SEWER UTILITIES WHEREBY FLOWS MAY GENERATE EROSION AND SEDIMENT POLLUTION.
17. THE PERMITTEE OR DESIGNEE SHALL PROVIDE EVIDENCE OF COVERAGE UNDER THE GENERAL CONSTRUCTION NATIONAL POLLUTANT DISCHARGE ELIMINATION SYSTEM PERMIT, IN THE FORM OF A NOTICE OF INTENT (NOI) FILED WITH THE STATE WATER RESOURCES CONTROL BOARD, PRIOR TO THE ISSUANCE OF ANY CONSTRUCTION PERMITS.
18. SEDIMENT AND EROSION CONTROLS MAY BE REMOVED ONLY WHEN CONTRIBUTORY UPSTREAM AREAS BECOME STABILIZED OR ARE MANAGED UPSTREAM (I.E., SINGLE--LOT SEDIMENT CONTROLS) AND AS LONG AS SEDIMENT LADEN RUNOFF WILL NOT DISCHARGE FROM THE SITE.
19. WHEN FUTURE WORK BY THE DEVELOPER NOT SHOWN ON THIS PLAN IS TO BE PERFORMED, THE SWPPP SHALL BE AMENDED TO INCLUDE SAID WORK AND ANY ADDITIONAL WATER QUALITY CONTROL MEASURES REQUIRED.
20. WHEN OWNERSHIP CHANGES FOR PORTIONS OF THE SITE THE DEVELOPER SHALL FILE A CHANGE OF INFORMATION (COI) WITH THE CRWQCB. WHEN THE LIMITS OR NATURE OF WORK ARE ALTERED THE DEVELOPER SHALL FILE A REVISED NOTICE OF INTENT (NOI) WITH THE SWRCB.
21. THIS PLAN SHALL BE IN EFFECT UNTIL ALL DISTURBED AREAS ARE PERMANENTLY STABILIZED, TRANSFERRED TO NEW OWNERSHIP, OR DEVELOPED UNDER FUTURE PLANS WITH AN NEW NOI, SWPPP, AND WQID NUMBER.

MINIMUM POST--CONSTRUCTION MAINTENANCE PLAN

AT THE COMPLETION OF THE WORK SHOWN, THE FOLLOWING PLAN SHALL BE FOLLOWED TO ENSURE WATER QUALITY CONTROL IS MAINTAINED FOR THE LIFE OF THE PROJECT:

1. STABILIZATION: ALL PLANTED SLOPES AND OTHER VEGETATED AREAS SHALL BE INSPECTED PRIOR TO OCTOBER 1 OF EACH YEAR AND AFTER MAJOR RAINFALL EVENTS (MORE THAN ½ INCH) AND REPAIRED AND REPLANTED AS NEEDED UNTIL A NOTICE OF TERMINATION (NOT) IS FILED.
2. STRUCTURAL PRACTICES: DESILTING BASINS, DIVERSION DITCHES, DOWNDRAINS, INLETS, OUTLET PROTECTION MEASURES, AND OTHER PERMANENT WATER QUALITY AND SEDIMENT AND EROSION CONTROLS SHALL BE INSPECTED PRIOR TO OCTOBER 1 OF EACH YEAR AND AFTER MAJOR RAINFALL EVENTS (MORE THAN ½ INCH). REPAIRS AND REPLACEMENTS SHALL BE MADE AS NEEDED AND RECORDED IN THE MAINTENANCE LOG IN PERPETUITY.
3. OPERATION AND MAINTENANCE, FUNDING: POST--CONSTRUCTION MANAGEMENT MEASURES ARE THE RESPONSIBILITY OF THE DEVELOPER UNTIL THE TRANSFER OF RESPECTIVE SITES TO HOME BUILDERS, INDIVIDUAL OWNERS, HOMEOWNERS ASSOCIATIONS, SCHOOL DISTRICTS, OR LOCAL AGENCIES AND/OR GOVERNMENTS. AT THAT TIME, THE NEW OWNERS SHALL ASSUME RESPONSIBILITY FOR THEIR RESPECTIVE PORTIONS OF THE DEVELOPMENT.

POST--CONSTRUCTION PERMANENT BMP'S	PROPOSED OPERATION & MAINTENANCE PROCEDURE DETAILS				
	INSPECTION FREQUENCY	MAINTENANCE FREQUENCY	MAINTENANCE METHOD	SERVICE FREQUENCY	SERVICE METHOD
PROPOSED SITE DESIGN	YEARLY	YEARLY	PER SWQMP	AS NEEDED	CLEAN
PROPOSED SOURCE CONTROL	YEARLY	YEARLY	PER SWQMP	AS NEEDED	REPLACE
PROPOSED TREATMENT CONTROL	N/A	N/A	N/A	N/A	N/A

PERMANENT POST--CONSTRUCTION BMP NOTES

1. PERMANENT POST CONSTRUCTION BMP DEVICES SHOWN ON PLAN SHALL NOT BE MOVED OR MODIFIED WITHOUT THE APPROVAL OF THE CITY ENGINEER OR RESIDENT ENGINEER AND THE ENGINEER OF WORK.

PRE--PROJECT LAND USE AREA

NAME: AVENIDA DE BENITO JUAREZ AVE. PROJECT

PERVIOUS LAND USE ACRES
DIRT, LANDSCAPING, FLAT (0--5%) 0.035 (1545 sf)

IMPERVIOUS LAND USE ACRES
PUBLIC STREET (driveways) 0.066 (2869 sf)

TOTAL AREA 0.101 ACRES (4414 sf)

POST--PROJECT LAND USE AREA

NAME: AVENIDA DE BENITO JUAREZ AVE. PROJECT

PERVIOUS LAND USE ACRES
DIRT, LANDSCAPING, FLAT (0--5%) 0.010 (442 sf)

IMPERVIOUS LAND USE ACRES
PUBLIC STREET 0.091 (3972 sf)

TOTAL AREA 0.101 ACRES (4414 sf)

ANTICIPATED POLLUTANTS

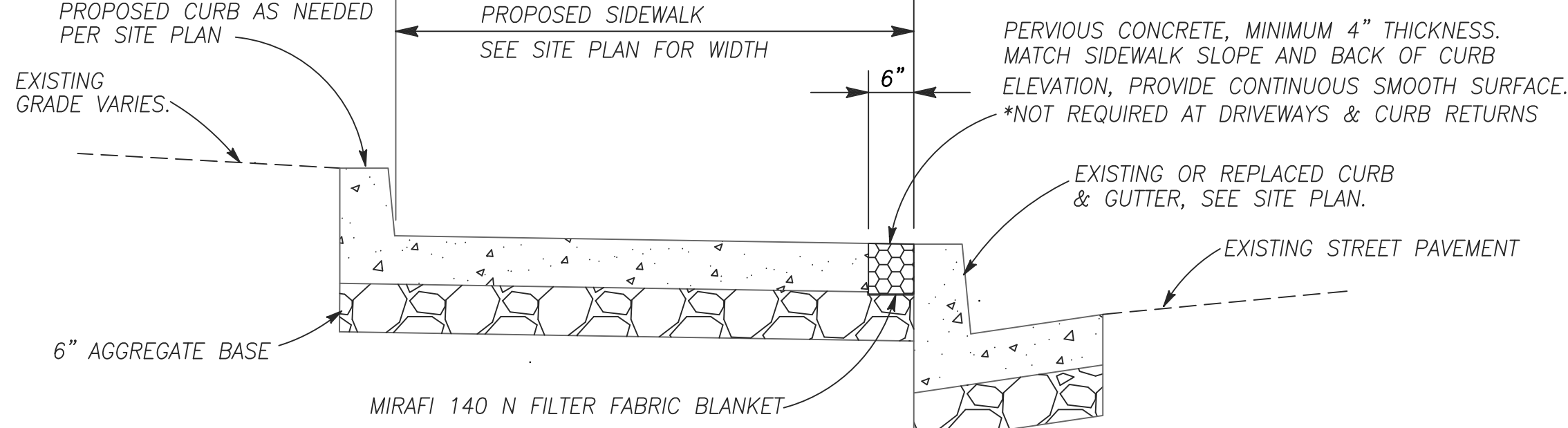
POST--DEVELOPMENT POLLUTANTS DERIVED FROM MIXED USE RESIDENTIAL AND COMMERCIAL DEVELOPMENTS CAN CONTRIBUTE TO STORM WATER DISCHARGE CONTAMINATION IF NOT MANAGED, MAINTAINED, AND CONTROLLED. PER TABLE 2--1 IN THE COUNTY WIDE MODEL SUSMP, DATED JANUARY 13, 2011, THE AVENIDA DE BENITO JUAREZ AVE. SIDEWALK IMPROVEMENT PROJECT IS ANTICIPATED TO GENERATE THE FOLLOWING POLLUTANTS: SEDIMENT, NUTRIENTS, TRASH AND DEBRIS, PESTICIDES, OXYGEN DEMANDING SUBSTANCES AND BACTERIA AND VIRUSES.

HYDROLOGIC UNIT CONTRIBUTION (WATERSHED)

THE AVENIDA DE BENITO JUAREZ AVE. SIDEWALK IMPROVEMENT PROJECT IS CONTAINED WITHIN THE CARLSBAD WATERSHED; HYDROLOGIC AREA 904. SPECIFICALLY, THE PROJECT IS A PORTION OF HYDROLOGIC SUB--AREA 904.52. HYDROLOGIC AREA 904.5 (VISTA), AND IS A TRIBUTARY TO BUENA VISTA LAGOON.

IMPAIRED WATER BODIES (303(D) STATUS)

ACCORDING TO THE CALIFORNIA 2006 303 (D) LIST PUBLISHED BY THE SAN DIEGO REGIONAL WATER QUALITY CONTROL BOARD, BUENA VISTA LAGOON IS NOT LISTED AS AN IMPAIRED WATER BODY. BUENA VISTA CREEK, DOWNSTREAM OF THE SITE, IS LISTED AS IMPAIRED. BUENA VISTA CREEK IS IMPACTED WITH DDE (PESTICIDE), PHOSPHORUS (NUTRIENTS), AND SEDIMENT TOXICITY.



NOTE: PERVIOUS CONCRETE WEAKENED PLANE JOINTS PER SDSRD G--09 OR MATCH EXISTING CURB & GUTTER JOINTS WHICHEVER IS LESSER.

WATER QUALITY INFILTRATION SWALE DETAIL

NOT TO SCALE

PRIMARY POLLUTANTS OF CONCERN

POLLUTANTS THAT ARE ANTICIPATED TO BE GENERATED BY THE PROPOSED PROJECT, AND ARE ALSO IDENTIFIED IN THE 303(D) LIST AS IMPACTING DOWNSTREAM WATER BODIES, ARE CALLED PRIMARY POLLUTANTS OF CONCERN. THE PRIMARY POLLUTANTS OF CONCERN FOR THE AVENIDA DE BENITO JUAREZ AVE. SIDEWALK IMPROVEMENTS ARE SEDIMENTS, TRASH & DEBRIS.

INFILTRATION AT THE PROJECT SITE

IT IS ANTICIPATED THAT DUE TO THE LOW PERMEABILITY OF THE UNDERLYING SOIL, INFILTRATION INTO UNDERLYING SOIL WILL BE MINIMAL. HOWEVER THE WATER QUALITY INFILTRATION SWALE WILL FILTER POLLUTANTS OF CONCERN FROM LOW FLOWS EVER IF THERE IS LITTLE INFILTRATION.

COMPLIANCE WITH WATER QUALITY OBJECTIVE

THE PROPOSED POST--CONSTRUCTION BMP'S, COMBINED WITH THE USE OF SITE DESIGN AND SOURCE CONTROL BMP'S, ADDRESS MITIGATION MEASURES TO PROTECT WATER QUALITY AND PROTECTION OF WATER OBJECTIVES AND BENEFICIAL USES TO THE MAXIMUM EXTENT PRACTICABLE. THE SELECTION, SIZING, AND DESIGN OF STORMWATER TREATMENT AND OTHER CONTROL MEASURES IN THIS PLAN MEET THE REQUIREMENTS OF REGIONAL WATER QUALITY CONTROL BOARD ORDER R9--2015--0001, THE COUNTYWIDE MODEL SUSMP, DATED JANUARY 13, 2011, AND THE CITY OF VISTA STORM WATER REQUIREMENTS.

LOW IMPACT DEVELOPMENT

"LID" AND "SITE DESIGN BMP'S" ARE PROJECT DESIGN FEATURES THAT REDUCE THE CREATION OR SEVERITY OF POTENTIAL POLLUTANT SOURCES OR REDUCE THE ALTERATION OF THE PROJECT SITE'S NATURAL FLOW REGIME.

SITE DESIGN BMP's

THE FOLLOWING ARE "SITE DESIGN BMP'S" WHICH WERE INCORPORATED INTO THE PROJECT AND A DESCRIPTION IS PROVIDED AS TO HOW THEY ARE INCLUDED IN THE PROJECT DESIGN:

- I. MINIMIZE AND DISCONNECT IMPERVIOUS SURFACES: THOUGH IMPERVIOUS SURFACES AREA ARE A MAJOR PORTION OF THE SITE DESIGN, THE MINIMUM AMOUNT OF IMPERVIOUS SURFACE WAS USED AND RUNOFF FROM THIS PROJECT WILL BE DIRECTED TO A GRAVEL INFILTRATION SWALE.
- II. CONSERVE NATURAL RESOURCES AND AREAS: NO NATURAL AREAS EXIST WITHIN THE PROJECT SITE. THE PROPERTY IS GRADED AND IS BEING USED AS A PUBLIC ROADWAY.
- III. CONSTRUCT HARDSCAPE WITH PERMEABLE MATERIALS: THIS IS NOT FEASIBLE SINCE THE MAINTENANCE OF SMALL AREAS OF PERVIOUS SIDEWALK IN RESIDENTIAL AREAS WOULD BE IMPRACTICAL.
- IV. MINIMIZE DIRECTLY CONNECTED IMPERVIOUS AREAS: RUNOFF FROM PRIVATE PROPERTY AND LANDSCAPE AREA WILL DISCHARGE INTO THE WATER QUALITY INFILTRATION SWALE.
- V. MAXIMIZE CANOPY INTERCEPTION: THIS IS NOT POSSIBLE SINCE THIS IS A SIDEWALK PROJECT.
- VI. PROTECT SLOPES AND CHANNELS: THE PROJECT DOES NOT PROPOSE TO AFFECT ANY NATURAL SLOPES OR CHANNELS. HOWEVER, ANY STORM WATER CONVEYANCE SYSTEM WILL MAINTAIN A MINIMAL SLOPE TO MITIGATE FOR VELOCITY.

SOURCE CONTROL BMP's

SOURCE CONTROL BMP'S ARE LAND USE OR SITE PLANNING PRACTICES, OR STRUCTURES THAT AIM TO PREVENT URBAN RUNOFF POLLUTION BY REDUCING THE POTENTIAL CONTAMINATION AT THE SOURCE OF POLLUTION.

- I. DESIGN OUTDOOR MATERIAL STORAGE AREAS TO REDUCE POLLUTION INTRODUCTION: NO OUTDOOR MATERIAL STORAGE AREAS ARE PROPOSED FOR THIS SIDEWALK PROJECT.
- II. DESIGN TRASH STORAGE AREA TO REDUCE POLLUTION INTRODUCTION: NO TRASH ENCLOSURE FACILITIES ARE PROPOSED FOR THIS SIDEWALK PROJECT.
- III. EMPLOY INTEGRATED PEST MANAGEMENT PRINCIPLES: NO LANDSCAPING IS PROPOSED AS PART OF THIS PROJECT.
- IV. USE EFFICIENT IRRIGATION SYSTEMS AND LANDSCAPE DESIGN: NO LANDSCAPING OR IRRIGATION IS PROPOSED AS PART OF THIS PROJECT.
- V. PROVIDE STORM WATER CONVEYANCE SYSTEM STENCILING AND SIGNAGE: ALL CATCH BASINS AND CURB INLETS (NOT INCLUDING LANDSCAPE/PEDESTRIAN AREA DRAINS) WILL REQUIRE STENCILING WITH THE MESSAGE "NO DUMPING -- I LIVE DOWNSTREAM".

BMP'S FOR INDIVIDUAL PRIORITY PROJECTS

BMP'S FOR INDIVIDUAL PRIORITY PROJECTS ARE SPECIFIC BMP'S TO ADDRESS SPECIFIC FEATURES OF A PROJECT SITE. THE FOLLOWING INDIVIDUAL PROJECT BMP'S WILL BE INCORPORATED INTO THE PROPOSED WEST CALIFORNIA AVE IMPROVEMENT PROJECT:

- I. EXISTING SURFACE RUNOFF FROM THE FROM THE AVENIDA DE BENITO JUAREZ AVE. SIDEWALK IMPROVEMENTS WILL BE TREATED BY A WATER QUALITY INFILTRATION SWALE.

CITY of VISTA

IMPROVEMENT PLANS FOR: CDBG SIDEWALK AND ADA RAMPS
AVENIDA DE BENITO JUAREZ

POST CONSTRUCTION BMP NOTES AND TABLES

APPROVED

CITY ENGINEER: SEE TITLE SHEET DATE: SHEET 6 OF 6

D--4678

ENGINEER OF WORK

SEE COVER SHEET



NO.	DESCRIPTION	CITY	DATE	VID	DATE
APPROVED CHANGES					

ENGINEER OF WORK DATE