

# City of San Diego

**CITY CONTACT:** Brittany Friedenreich , Senior Contract Specialist, Email: [BFriedenreic@sandiego.gov](mailto:BFriedenreic@sandiego.gov)  
Phone No. (619) 533-3104

---

## ADDENDUM A



## FOR

## JOHN F. KENNEDY NEIGHBORHOOD PARK RESTROOM AND PLAYGROUND IMPROVEMENTS

BID NO.:	<u>K-23-2101-DBB-3</u>
SAP NO. (WBS/IO/CC):	<u>B-18005</u>
CLIENT DEPARTMENT:	<u>1714</u>
COUNCIL DISTRICT:	<u>4</u>
PROJECT TYPE:	<u>GB</u>
CDBG NO.:	<u>100003-2022</u>

---

### **BID DUE DATE:**

**2:00 PM  
JANUARY 26, 2023**

### **CITY OF SAN DIEGO'S ELECTRONIC BIDDING SITE, PLANETBIDS**

<http://www.sandiego.gov/cip/bidopps/index.shtml>

## **A. CHANGES TO CONTRACT DOCUMENTS**

The following changes to the Contract Documents are hereby made effective as though originally issued with the bid package. Bidders are reminded that all previous requirements to this solicitation remain in full force and effect.

## **B. BIDDER'S QUESTIONS**

- Q1. Per sheet L-9, Detail A, D, E states No. 2 Stone. Can you please provide clarification on what is No. 2 Stone. Typically this would be a  $\frac{3}{4}$ " rock for drainage. Please confirm  $\frac{3}{4}$ " rock is acceptable for this application or provide additional information.
- A1. Per SSP Section 200-2.1 the base material shall be  $\frac{3}{4}$ " Permeable Class 2 base per the table shown. Clean, washed  $\frac{3}{4}$ " drainage rock is an acceptable substitute.
- Q2. Please provide irrigation as built for the existing park. This will help determining what has to be fixed during new utility installation through the existing park lawn.
- A2. Review as-built drawings pages 39 through 40 included in this addendum.
- Q3. Please provide what type of backflow enclosure is to be used. Either Stainless Steel, Coated Green, or?
- A3. The existing stainless-steel enclosure on the existing irrigation backflow preventer is to be protected in place. The backflow enclosure for the new domestic service shall be stainless steel, such as Strong Box SBBC-XXSS or approved equal.
- Q4. In review of the project plans for the above referenced project, it was found that Details A, D & E on sheet L-9 dated 11/7/22 is not a manufacturer approved detail for the perimeter edge of the resilient surfacing. We are asking for approval of our standard edge detail, to be installed per manufacturer. Review detailed RFI questions pages 41 through 52 included in this Addendum.

- A4. ASTM F1292, standards for Fall Attenuation, cited applies only to areas within the play equipment fall zones. While Details A, D & E included on sheet L-9 for playground resilient surfacing show a deepened color wear layer key at the edge of the resilient surfacing which reduces the thickness of the cushion layer, this specified edge condition of the detail occurs outside of the required fall zone and thus ASTM F1292 is not applicable. The remainder of the resilient surfacing details conform and will be installed in accordance with the manufacturer's specifications and ASTM standards.

## C. ATTACHMENTS

1. To Attachment D, Community Development Block Grant (CDBG), Housing and Urban Development (HUD) Funding Agency Provisions, pages 50 through 78, Section **9, WAGE RATES, DELETE** in their entirety and **SUBSTITUTE** with pages 4 through 38 of this Addendum.

Rania Amen, Director  
Engineering & Capital Projects Department

Dated: *January 13, 2023*  
San Diego, California

RA/AP/br

**9. WAGE RATES:** This contract shall be subject to the following Davis-Bacon Wage Decisions:

"General Decision Number: CA20230001 01/06/2023

Superseded General Decision Number: CA20220001

State: California

Construction Types: Building, Heavy (Heavy and Dredging),  
Highway and Residential

County: San Diego County in California.

BUILDING CONSTRUCTION PROJECTS; DREDGING PROJECTS (does not include hopper dredge work); HEAVY CONSTRUCTION PROJECTS (does not include water well drilling); HIGHWAY CONSTRUCTION PROJECTS; RESIDENTIAL CONSTRUCTION PROJECTS (consisting of single family homes and apartments up to and including 4 stories)

Note: Contracts subject to the Davis-Bacon Act are generally required to pay at least the applicable minimum wage rate required under Executive Order 14026 or Executive Order 13658.

Please note that these Executive Orders apply to covered contracts entered into by the federal government that are subject to the Davis-Bacon Act itself, but do not apply to contracts subject only to the Davis-Bacon Related Acts, including those set forth at 29 CFR 5.1(a)(2)-(60).

If the contract is entered into on or after January 30, 2022, or the contract is renewed or extended (e.g., an option is exercised) on or after January 30, 2022:	<ul style="list-style-type: none"><li>. Executive Order 14026 generally applies to the contract.</li><li>. The contractor must pay all covered workers at least \$16.20 per hour (or the applicable wage rate listed on this wage determination, if it is higher) for all hours spent performing on the contract in 2023.</li></ul>
If the contract was awarded on or between January 1, 2015 and January 29, 2022, and the contract is not renewed or extended on or after January 30, 2022:	<ul style="list-style-type: none"><li>. Executive Order 13658 generally applies to the contract.</li><li>. The contractor must pay all covered workers at least \$12.15 per hour (or the applicable wage rate listed on this wage determination, if it is higher) for all hours spent performing on</li></ul>

that contract in 2023.

The applicable Executive Order minimum wage rate will be adjusted annually. If this contract is covered by one of the Executive Orders and a classification considered necessary for performance of work on the contract does not appear on this wage determination, the contractor must still submit a conformance request.

Additional information on contractor requirements and worker protections under the Executive Orders is available at <http://www.dol.gov/whd/govcontracts>.

Modification Number  
0

Publication Date  
01/06/2023

ASBE0005-002 07/04/2022

	Rates	Fringes
Asbestos Workers/Insulator (Includes the application of all insulating materials, protective coverings, coatings, and finishes to all types of mechanical systems).....	\$ 49.58	25.27
Fire Stop Technician (Application of Firestopping Materials for wall openings and penetrations in walls, floors, ceilings and curtain walls).....	\$ 32.09	19.66

-----  
ASBE0005-004 07/04/2022

	Rates	Fringes
Asbestos Removal worker/hazardous material handler (Includes preparation, wetting, stripping, removal, scrapping, vacuuming, bagging and disposing of all insulation materials from mechanical systems, whether they contain asbestos or not)....	\$ 23.52	13.37

-----  
BOIL0092-003 01/01/2021

	Rates	Fringes
BOILERMAKER.....	\$ 46.03	38.81

-----  
BRCA0004-008 11/01/2022

	Rates	Fringes
BRICKLAYER; MARBLE SETTER.....	\$ 44.65	19.00

-----  
BRCA0018-004 06/01/2022

	Rates	Fringes
MARBLE FINISHER.....	\$ 37.87	14.13

TILE FINISHER.....	\$ 32.44	12.54
TILE LAYER.....	\$ 45.05	18.33

-----  
BRCA0018-010 09/01/2022

	Rates	Fringes
TERRAZZO FINISHER.....	\$ 38.37	14.13
TERRAZZO WORKER/SETTER.....	\$ 46.49	14.66

-----

CARP0213-003 07/01/2021

	Rates	Fringes
Drywall		
(1) Work on wood framed construction of single family residences, apartments or condominiums under four stories		
Drywall Installer/Lather....	\$ 32.14	16.28
Drywall Stocker/Scrapper....	\$ 22.16	8.62

-----

CARP0619-002 07/01/2021

	Rates	Fringes
Drywall		
(2) All other work		
Drywall Installer/Lather....	\$ 42.80	16.28
Drywall Stocker/Scrapper....	\$ 23.07	8.62

-----

CARP0619-003 07/01/2021

	Rates	Fringes
CARPENTER		
(1) Bridge.....	\$ 51.53	16.28
(2) Commercial Building....	\$ 46.30	16.28
(3) Heavy & Highway.....	\$ 51.40	16.28
(4) Residential Carpenter..	\$ 38.47	16.28
(5) Residential		
Insulation Installer.....	\$ 24.16	15.76
PILEDRIVERMAN.....	\$ 51.53	16.28

-----

CARP0619-004 07/01/2021

	Rates	Fringes
Diver		
(1) Wet.....	\$ 831.20	16.28
(2) Standby.....	\$ 444.24	16.28
(3) Tender.....	\$ 436.24	16.28
(4) Assistant Tender.....	\$ 412.24	16.28

Amounts in "'Rates' column are per day

-----  
CARP0721-001 07/01/2021

	Rates	Fringes
Modular Furniture Installer.....	\$ 21.85	7.15

-----  
CARP1607-004 07/01/2021

	Rates	Fringes
MILLWRIGHT.....	\$ 51.90	16.48

-----  
ELEC0569-001 06/01/2021

	Rates	Fringes
Electricians (Tunnel Work)		
Cable Splicer.....	\$ 54.36	3%+14.88
Electrician.....	\$ 53.61	3%+14.88
Electricians: (All Other Work, Including 4 Stories Residential)		
Cable Splicer.....	\$ 48.40	3%+14.88
Electrician.....	\$ 47.65	3%+14.88

-----  
ELEC0569-004 06/01/2021

	Rates	Fringes
ELECTRICIAN (Sound & Communications Sound Technician).....	\$ 35.20	13.84
SCOPE OF WORK Assembly, installation, operation, service and maintenance of components or systems as used in closed circuit television, amplified master television distribution, CATV on private property, intercommunication, burglar alarm, fire		



alarm, life support and all security alarms, private and public telephone and related telephone interconnect, public address, paging, audio, language, electronic, background music system less than line voltage or any system acceptable for class two wiring for private, commercial, or industrial use furnished by leased wire, frequency modulation or other recording devices, electrical apparatus by means of which electricity is applied to the amplification, transmission, transference, recording or reproduction of voice, music, sound, impulses and video. Excluded from this Scope of Work - transmission, service and maintenance of background music. All of the above shall include the installation and transmission over fiber optics.

-----  
ELEC0569-005 06/01/2021

Rates

Fringes

Sound & Communications

Sound Technician.....\$ 35.20 13.84

SCOPE OF WORK Assembly, installation, operation, service and maintenance of components or systems as used in closed circuit television, amplified master television distribution, CATV on private property, intercommunication, burglar alarm, fire alarm, life support and all security alarms, private and public telephone and related telephone interconnect, public address, paging, audio, language, electronic, background music system less than line voltage or any system acceptable for class two wiring for private, commercial, or industrial use furnished by leased wire, frequency modulation or other recording devices, electrical apparatus by means of which electricity is applied to the amplification, transmission, transference, recording or reproduction of voice, music, sound, impulses and video. Excluded from this Scope of Work - transmission, service and maintenance of background music. All of the above shall include the installation and transmission over fiber optics.

SOUND TECHNICIAN: Terminating, operating and performing final check-out

-----  
ELEC0569-006 06/06/2022

Work on street lighting; traffic signals; and underground

systems and/or established easements outside of buildings

	Rates	Fringes
Traffic signal, street light and underground work		
Utility Technician #1.....	\$ 38.67	9.11
Utility Technician #2.....	\$ 30.10	8.85

STREET LIGHT & TRAFFIC SIGNAL WORK:

UTILITY TECHNICIAN #1: Installation of street lights and traffic signals, including electrical circuitry, programmable controller, pedestal-mounted electrical meter enclosures and laying of pre-assembled cable in ducts. The layout of electrical systems and communication installation including proper position of trench depths, and radius at duct banks, location for manholes, street lights and traffic signals.

UTILITY TECHNICIAN #2: Distribution of material at jobsite, installation of underground ducts for electrical, telephone, cable TV and communication systems. The setting, leveling, grounding and racking of precast manholes, handholes and transformer pads.

-----  
ELEC0569-008 08/30/2021

	Rates	Fringes
ELECTRICIAN (Residential, 1-3 Stories).....	\$ 37.28	7.98

-----

ELEC1245-001 06/01/2022

	Rates	Fringes
LINE CONSTRUCTION		
(1) Lineman; Cable splicer..	\$ 64.40	22.58
(2) Equipment specialist (operates crawler tractors, commercial motor vehicles, backhoes, trenchers, cranes (50 tons and below), overhead & underground distribution		

line equipment).....	\$ 50.00	21.30
(3) Groundman.....	\$ 38.23	20.89
(4) Powderman.....	\$ 51.87	18.79

HOLIDAYS: New Year's Day, M.L. King Day, Memorial Day,  
Independence Day, Labor Day, Veterans Day, Thanksgiving Day  
and day after Thanksgiving, Christmas Day

-----  
ELEV0018-001 01/01/2022

	Rates	Fringes
ELEVATOR MECHANIC.....	\$ 61.34	36.885+a+b

FOOTNOTE:

a. PAID VACATION: Employer contributes 8% of regular hourly rate as vacation pay credit for employees with more than 5 years of service, and 6% for 6 months to 5 years of service.

b. PAID HOLIDAYS: New Year's Day, Memorial Day, Independence Day, Labor Day, Veterans' Day, Thanksgiving Day, Friday after Thanksgiving, and Christmas Day.

-----  
ENGI0012-003 07/01/2022

	Rates	Fringes
OPERATOR: Power Equipment		
(All Other Work)		
GROUP 1.....	\$ 51.90	30.70
GROUP 2.....	\$ 52.68	30.70
GROUP 3.....	\$ 52.97	30.70
GROUP 4.....	\$ 54.46	30.70
GROUP 5.....	\$ 48.96	25.25
GROUP 6.....	\$ 54.68	30.70
GROUP 8.....	\$ 54.79	30.70
GROUP 9.....	\$ 49.29	25.25
GROUP 10.....	\$ 54.91	30.70
GROUP 11.....	\$ 49.41	25.25
GROUP 12.....	\$ 55.08	30.70
GROUP 13.....	\$ 55.18	30.70
GROUP 14.....	\$ 55.21	30.70
GROUP 15.....	\$ 55.29	30.70
GROUP 16.....	\$ 55.41	30.70
GROUP 17.....	\$ 55.58	30.70
GROUP 18.....	\$ 55.68	30.70
GROUP 19.....	\$ 55.79	30.70
GROUP 20.....	\$ 55.91	30.70
GROUP 21.....	\$ 56.08	30.70
GROUP 22.....	\$ 56.18	30.70

GROUP 23.....	\$ 56.29	30.70
GROUP 24.....	\$ 56.41	30.70
GROUP 25.....	\$ 56.58	30.70
OPERATOR: Power Equipment (Cranes, Piledriving & Hoisting)		
GROUP 1.....	\$ 53.25	30.70
GROUP 2.....	\$ 54.03	30.70
GROUP 3.....	\$ 54.32	30.70
GROUP 4.....	\$ 54.46	30.70
GROUP 5.....	\$ 54.68	30.70
GROUP 6.....	\$ 54.79	30.70
GROUP 7.....	\$ 54.91	30.70
GROUP 8.....	\$ 55.08	30.70
GROUP 9.....	\$ 55.25	30.70
GROUP 10.....	\$ 56.25	30.70
GROUP 11.....	\$ 57.25	30.70
GROUP 12.....	\$ 58.25	30.70
GROUP 13.....	\$ 59.25	30.70
OPERATOR: Power Equipment (Tunnel Work)		
GROUP 1.....	\$ 54.53	30.70
GROUP 2.....	\$ 54.82	30.70
GROUP 3.....	\$ 54.96	30.70
GROUP 4.....	\$ 55.18	30.70
GROUP 5.....	\$ 55.29	30.70
GROUP 6.....	\$ 55.41	30.70
GROUP 7.....	\$ 55.71	30.70

#### PREMIUM PAY:

\$3.75 per hour shall be paid on all Power Equipment Operator work on the following Military Bases: China Lake Naval Reserve, Vandenberg AFB, Point Arguello, Seely Naval Base, Fort Irwin, Nebo Annex Marine Base, Marine Corp Logistics Base Yermo, Edwards AFB, 29 Palms Marine Base and Camp Pendleton

Workers required to suit up and work in a hazardous material environment: \$2.00 per hour additional. Combination mixer and compressor operator on gunite work shall be classified as a concrete mobile mixer operator.

SEE ZONE DEFINITIONS AFTER CLASSIFICATIONS

#### POWER EQUIPMENT OPERATORS CLASSIFICATIONS

GROUP 1: Bargeman; Brakeman; Compressor operator; Ditch Witch, with seat or similar type equipment; Elevator operator-inside; Engineer Oiler; Forklift operator (includes loed, lull or similar types under 5 tons; Generator operator; Generator, pump or compressor plant

operator; Pump operator; Signalman; Switchman

GROUP 2: Asphalt-rubber plant operator (nurse tank operator); Concrete mixer operator-skip type; Conveyor operator; Fireman; Forklift operator (includes loed, lull or similar types over 5 tons; Hydrostatic pump operator; oiler crusher (asphalt or concrete plant); Petromat laydown machine; PJU side dum jack; Screening and conveyor machine operator (or similar types); Skiploader (wheel type up to 3/4 yd. without attachment); Tar pot fireman; Temporary heating plant operator; Trenching machine oiler

GROUP 3: Asphalt-rubber blend operator; Bobcat or similar type (Skid steer); Equipment greaser (rack); Ford Ferguson (with dragtype attachments); Helicopter radioman (ground); Stationary pipe wrapping and cleaning machine operator

GROUP 4: Asphalt plant fireman; Backhoe operator (mini-max or similar type); Boring machine operator; Boxman or mixerman (asphalt or concrete); Chip spreading machine operator; Concrete cleaning decontamination machine operator; Concrete Pump Operator (small portable); Drilling machine operator, small auger types (Texoma super economatic or similar types - Hughes 100 or 200 or similar types - drilling depth of 30' maximum); Equipment greaser (grease truck); Guard rail post driver operator; Highline cableway signalman; Hydra-hammer-aero stomper; Micro Tunneling (above ground tunnel); Power concrete curing machine operator; Power concrete saw operator; Power-driven jumbo form setter operator; Power sweeper operator; Rock Wheel Saw/Trencher; Roller operator (compacting); Screed operator (asphalt or concrete); Trenching machine operator (up to 6 ft.); Vacuum or much truck

GROUP 5: Equipment Greaser (Grease Truck/Multi Shift).

GROUP 6: Articulating material hauler; Asphalt plant engineer; Batch plant operator; Bit sharpener; Concrete joint machine operator (canal and similar type); Concrete planer operator; Dandy digger; Deck engine operator; Derrickman (oilfield type); Drilling machine operator, bucket or auger types (Calweld 100 bucket or similar types - Watson 1000 auger or similar types - Texoma 330, 500 or 600 auger or similar types - drilling depth of 45' maximum); Drilling machine operator; Hydrographic seeder machine operator (straw, pulp or seed), Jackson track maintainer, or similar type; Kalamazoo Switch tamper, or

similar type; Machine tool operator; Maginnis internal full slab vibrator, Mechanical berm, curb or gutter(concrete or asphalt); Mechanical finisher operator (concrete, Clary-Johnson-Bidwell or similar); Micro tunnel system (below ground); Pavement breaker operator (truck mounted); Road oil mixing machine operator; Roller operator (asphalt or finish), rubber-tired earth moving equipment (single engine, up to and including 25 yds. struck); Self-propelled tar pipelining machine operator; Skiploader operator (crawler and wheel type, over 3/4 yd. and up to and including 1-1/2 yds.); Slip form pump operator (power driven hydraulic lifting device for concrete forms); Tractor operator-bulldozer, tamper-scraper (single engine, up to 100 h.p. flywheel and similar types, up to and including D-5 and similar types); Tugger hoist operator (1 drum); Ultra high pressure waterjet cutting tool system operator; Vacuum blasting machine operator

GROUP 8: Asphalt or concrete spreading operator (tamping or finishing); Asphalt paving machine operator (Barber Greene or similar type); Asphalt-rubber distribution operator; Backhoe operator (up to and including 3/4 yd.), small ford, Case or similar; Cast-in-place pipe laying machine operator; Combination mixer and compressor operator (guniting work); Compactor operator (self-propelled); Concrete mixer operator (paving); Crushing plant operator; Drill Doctor; Drilling machine operator, Bucket or auger types (Calweld 150 bucket or similar types - Watson 1500, 2000 2500 auger or similar types - Texoma 700, 800 auger or similar types - drilling depth of 60' maximum); Elevating grader operator; Grade checker; Gradall operator; Grouting machine operator; Heavy-duty repairman; Heavy equipment robotics operator; Kalamazoo balliste regulator or similar type; Kolman belt loader and similar type; Le Tourneau blob compactor or similar type; Loader operator (Athey, Euclid, Sierra and similar types); Mobark Chipper or similar; Ozzie padder or similar types; P.C. slot saw; Pneumatic concrete placing machine operator (Hackley-Presswell or similar type); Pumpcrete gun operator; Rock Drill or similar types; Rotary drill operator (excluding caisson type); Rubber-tired earth-moving equipment operator (single engine, caterpillar, Euclid, Athey Wagon and similar types with any and all attachments over 25 yds. up to and including 50 cu. yds. struck); Rubber-tired earth-moving equipment operator (multiple engine up to and including 25 yds. struck); Rubber-tired scraper operator (self-loading paddle wheel type-John Deere, 1040 and similar single unit); Self-

propelled curb and gutter machine operator; Shuttle buggy; Skiploader operator (crawler and wheel type over 1-1/2 yds. up to and including 6-1/2 yds.); Soil remediation plant operator; Surface heaters and planer operator; Tractor compressor drill combination operator; Tractor operator (any type larger than D-5 - 100 flywheel h.p. and over, or similar-bulldozer, tamper, scraper and push tractor single engine); Tractor operator (boom attachments), Traveling pipe wrapping, cleaning and bending machine operator; Trenching machine operator (over 6 ft. depth capacity, manufacturer's rating); trenching Machine with Road Miner attachment (over 6 ft depth capacity); Ultra high pressure waterjet cutting tool system mechanic; Water pull (compaction) operator

#### GROUP 9: Heavy Duty Repairman

GROUP 10: Drilling machine operator, Bucket or auger types (Calweld 200 B bucket or similar types-Watson 3000 or 5000 auger or similar types-Texoma 900 auger or similar types-drilling depth of 105' maximum); Dual drum mixer, dynamic compactor LDC350 (or similar types); Monorail locomotive operator (diesel, gas or electric); Motor patrol-blade operator (single engine); Multiple engine tractor operator (Euclid and similar type-except Quad 9 cat.); Rubber-tired earth-moving equipment operator (single engine, over 50 yds. struck); Pneumatic pipe ramming tool and similar types; Prestressed wrapping machine operator; Rubber-tired earth-moving equipment operator (single engine, over 50 yds. struck); Rubber tired earth moving equipment operator (multiple engine, Euclid, caterpillar and similar over 25 yds. and up to 50 yds. struck), Tower crane repairman; Tractor loader operator (crawler and wheel type over 6-1/2 yds.); Woods mixer operator (and similar Pugmill equipment)

GROUP 11: Heavy Duty Repairman - Welder Combination, Welder - Certified.

GROUP 12: Auto grader operator; Automatic slip form operator; Drilling machine operator, bucket or auger types (Calweld, auger 200 CA or similar types - Watson, auger 6000 or similar types - Hughes Super Duty, auger 200 or similar types - drilling depth of 175' maximum); Hoe ram or similar with compressor; Mass excavator operator less tha 750 cu. yards; Mechanical finishing machine operator; Mobile form traveler operator; Motor patrol operator (multi-engine);

Pipe mobile machine operator; Rubber-tired earth- moving equipment operator (multiple engine, Euclid, Caterpillar and similar type, over 50 cu. yds. struck); Rubber-tired self- loading scraper operator (paddle-wheel-auger type self-loading - two (2) or more units)

GROUP 13: Rubber-tired earth-moving equipment operator operating equipment with push-pull system (single engine, up to and including 25 yds. struck)

GROUP 14: Canal liner operator; Canal trimmer operator; Remote- control earth-moving equipment operator (operating a second piece of equipment: \$1.00 per hour additional); Wheel excavator operator (over 750 cu. yds.)

GROUP 15: Rubber-tired earth-moving equipment operator, operating equipment with push-pull system (single engine, Caterpillar, Euclid, Athey Wagon and similar types with any and all attachments over 25 yds. and up to and including 50 yds. struck); Rubber-tired earth-moving equipment operator, operating equipment with push-pull system (multiple engine-up to and including 25 yds. struck)

GROUP 16: Rubber-tired earth-moving equipment operator, operating equipment with push-pull system (single engine, over 50 yds. struck); Rubber-tired earth-moving equipment operator, operating equipment with push-pull system (multiple engine, Euclid, Caterpillar and similar, over 25 yds. and up to 50 yds. struck)

GROUP 17: Rubber-tired earth-moving equipment operator, operating equipment with push-pull system (multiple engine, Euclid, Caterpillar and similar, over 50 cu. yds. struck); Tandem tractor operator (operating crawler type tractors in tandem - Quad 9 and similar type)

GROUP 18: Rubber-tired earth-moving equipment operator, operating in tandem (scrappers, belly dumps and similar types in any combination, excluding compaction units - single engine, up to and including 25 yds. struck)

GROUP 19: Rotex concrete belt operator (or similar types); Rubber-tired earth-moving equipment operator, operating in tandem (scrappers, belly dumps and similar types in any combination, excluding compaction units - single engine, Caterpillar, Euclid, Athey Wagon and similar types with any and all attachments over 25 yds. and up to and including 50



cu. yds. struck); Rubber-tired earth-moving equipment operator, operating in tandem (scrapers, belly dumps and similar types in any combination, excluding compaction units - multiple engine, up to and including 25 yds. struck)

GROUP 20: Rubber-tired earth-moving equipment operator, operating in tandem (scrapers, belly dumps and similar types in any combination, excluding compaction units - single engine, over 50 yds. struck); Rubber-tired earth-moving equipment operator, operating in tandem (scrapers, belly dumps, and similar types in any combination, excluding compaction units - multiple engine, Euclid, Caterpillar and similar, over 25 yds. and up to 50 yds. struck)

GROUP 21: Rubber-tired earth-moving equipment operator, operating in tandem (scrapers, belly dumps and similar types in any combination, excluding compaction units - multiple engine, Euclid, Caterpillar and similar type, over 50 cu. yds. struck)

GROUP 22: Rubber-tired earth-moving equipment operator, operating equipment with the tandem push-pull system (single engine, up to and including 25 yds. struck)

GROUP 23: Rubber-tired earth-moving equipment operator, operating equipment with the tandem push-pull system (single engine, Caterpillar, Euclid, Athey Wagon and similar types with any and all attachments over 25 yds. and up to and including 50 yds. struck); Rubber-tired earth-moving equipment operator, operating with the tandem push-pull system (multiple engine, up to and including 25 yds. struck)

GROUP 24: Rubber-tired earth-moving equipment operator, operating equipment with the tandem push-pull system (single engine, over 50 yds. struck); Rubber-tired earth-moving equipment operator, operating equipment with the tandem push-pull system (multiple engine, Euclid, Caterpillar and similar, over 25 yds. and up to 50 yds. struck)

GROUP 25: Concrete pump operator-truck mounted; Rubber-tired earth-moving equipment operator, operating equipment with the tandem push-pull system (multiple engine, Euclid, Caterpillar and similar type, over 50 cu. yds. struck)

## CRANES, PILEDRIVING AND HOISTING EQUIPMENT CLASSIFICATIONS

GROUP 1: Engineer oiler; Fork lift operator (includes loed, lull or similar types)

GROUP 2: Truck crane oiler

GROUP 3: A-frame or winch truck operator; Ross carrier operator (jobsite)

GROUP 4: Bridge-type unloader and turntable operator; Helicopter hoist operator

GROUP 5: Hydraulic boom truck; Stinger crane (Austin-Western or similar type); Tugger hoist operator (1 drum)

GROUP 6: Bridge crane operator; Cretor crane operator; Hoist operator (Chicago boom and similar type); Lift mobile operator; Lift slab machine operator (Vagtborg and similar types); Material hoist and/or manlift operator; Polar gantry crane operator; Self Climbing scaffold (or similar type); Shovel, backhoe, dragline, clamshell operator (over 3/4 yd. and up to 5 cu. yds. mrc); Tugger hoist operator

GROUP 7: Pedestal crane operator; Shovel, backhoe, dragline, clamshell operator (over 5 cu. yds. mrc); Tower crane repair; Tugger hoist operator (3 drum)

GROUP 8: Crane operator (up to and including 25 ton capacity); Crawler transporter operator; Derrick barge operator (up to and including 25 ton capacity); Hoist operator, stiff legs, Guy derrick or similar type (up to and including 25 ton capacity); Shovel, backhoe, dragline, clamshell operator (over 7 cu. yds., M.R.C.)

GROUP 9: Crane operator (over 25 tons and up to and including 50 tons mrc); Derrick barge operator (over 25 tons up to and including 50 tons mrc); Highline cableway operator; Hoist operator, stiff legs, Guy derrick or similar type (over 25 tons up to and including 50 tons mrc); K-crane operator; Polar crane operator; Self erecting tower crane operator maximum lifting capacity ten tons

GROUP 10: Crane operator (over 50 tons and up to and including 100 tons mrc); Derrick barge operator (over 50 tons up to and including 100 tons mrc); Hoist operator, stiff legs, Guy derrick or similar type (over 50 tons up to

and including 100 tons mrc), Mobile tower crane operator (over 50 tons, up to and including 100 tons M.R.C.); Tower crane operator and tower gantry

GROUP 11: Crane operator (over 100 tons and up to and including 200 tons mrc); Derrick barge operator (over 100 tons up to and including 200 tons mrc); Hoist operator, stiff legs, Guy derrick or similar type (over 100 tons up to and including 200 tons mrc); Mobile tower crane operator (over 100 tons up to and including 200 tons mrc)

GROUP 12: Crane operator (over 200 tons up to and including 300 tons mrc); Derrick barge operator (over 200 tons up to and including 300 tons mrc); Hoist operator, stiff legs, Guy derrick or similar type (over 200 tons, up to and including 300 tons mrc); Mobile tower crane operator (over 200 tons, up to and including 300 tons mrc)

GROUP 13: Crane operator (over 300 tons); Derrick barge operator (over 300 tons); Helicopter pilot; Hoist operator, stiff legs, Guy derrick or similar type (over 300 tons); Mobile tower crane operator (over 300 tons)

#### TUNNEL CLASSIFICATIONS

GROUP 1: Skiploader (wheel type up to 3/4 yd. without attachment)

GROUP 2: Power-driven jumbo form setter operator

GROUP 3: Dinkey locomotive or motorperson (up to and including 10 tons)

GROUP 4: Bit sharpener; Equipment greaser (grease truck); Slip form pump operator (power-driven hydraulic lifting device for concrete forms); Tugger hoist operator (1 drum); Tunnel locomotive operator (over 10 and up to and including 30 tons)

GROUP 5: Backhoe operator (up to and including 3/4 yd.); Small Ford, Case or similar; Drill doctor; Grouting machine operator; Heading shield operator; Heavy-duty repairperson; Loader operator (Athey, Euclid, Sierra and similar types); Mucking machine operator (1/4 yd., rubber-tired, rail or track type); Pneumatic concrete placing machine operator (Hackley-Presswell or similar type); Pneumatic heading shield (tunnel); Pumpcrete gun operator; Tractor compressor

drill combination operator; Tugger hoist operator (2 drum);  
Tunnel locomotive operator (over 30 tons)

GROUP 6: Heavy Duty Repairman

GROUP 7: Tunnel mole boring machine operator

#### ENGINEERS ZONES

\$1.00 additional per hour for all of IMPERIAL County and the portions of KERN, RIVERSIDE & SAN BERNARDINO Counties as defined below:

That area within the following Boundary: Begin in San Bernardino County, approximately 3 miles NE of the intersection of I-15 and the California State line at that point which is the NW corner of Section 1, T17N,m R14E, San Bernardino Meridian. Continue W in a straight line to that point which is the SW corner of the northwest quarter of Section 6, T27S, R42E, Mt. Diablo Meridian. Continue North to the intersection with the Inyo County Boundary at that point which is the NE corner of the western half of the northern quarter of Section 6, T25S, R42E, MDM. Continue W along the Inyo and San Bernardino County boundary until the intersection with Kern County, as that point which is the SE corner of Section 34, T24S, R40E, MDM. Continue W along the Inyo and Kern County boundary until the intersection with Tulare County, at that point which is the SW corner of the SE quarter of Section 32, T24S, R37E, MDM. Continue W along the Kern and Tulare County boundary, until that point which is the NW corner of T25S, R32E, MDM. Continue S following R32E lines to the NW corner of T31S, R32E, MDM. Continue W to the NW corner of T31S, R31E, MDM. Continue S to the SW corner of T32S, R31E, MDM. Continue W to SW corner of SE quarter of Section 34, T32S, R30E, MDM. Continue S to SW corner of T11N, R17W, SBM. Continue E along south boundary of T11N, SBM to SW corner of T11N, R7W, SBM. Continue S to SW corner of T9N, R7W, SBM. Continue E along south boundary of T9N, SBM to SW corner of T9N, R1E, SBM. Continue S along west boundary of R1E, SMB to Riverside County line at the SW corner of T1S, R1E, SBM. Continue E along south boundary of T1S, SBM (Riverside County Line) to SW corner of T1S, R10E, SBM. Continue S along west boundary of R10E, SBM to Imperial County line at the SW corner of T8S, R10E, SBM. Continue W along Imperial and Riverside county line to NW corner of T9S, R9E, SBM. Continue S along the boundary between Imperial and San Diego Counties, along the west edge of R9E, SBM to the south boundary of Imperial County/California state

line. Follow the California state line west to Arizona state line, then north to Nevada state line, then continuing NW back to start at the point which is the NW corner of Section 1, T17N, R14E, SBM

\$1.00 additional per hour for portions of SAN LUIS OBISPO, KERN, SANTA BARBARA & VENTURA as defined below:

That area within the following Boundary: Begin approximately 5 miles north of the community of Cholame, on the Monterey County and San Luis Obispo County boundary at the NW corner of T25S, R16E, Mt. Diablo Meridian. Continue south along the west side of R16E to the SW corner of T30S, R16E, MDM. Continue E to SW corner of T30S, R17E, MDM. Continue S to SW corner of T31S, R17E, MDM. Continue E to SW corner of T31S, R18E, MDM. Continue S along West side of R18E, MDM as it crosses into San Bernardino Meridian numbering area and becomes R30W. Follow the west side of R30W, SBM to the SW corner of T9N, R30W, SBM. Continue E along the south edge of T9N, SBM to the Santa Barbara County and Ventura County boundary at that point which is the SW corner of Section 34. T9N, R24W, SBM, continue S along the Ventura County line to that point which is the SW corner of the SE quarter of Section 32, T7N, R24W, SBM. Continue E along the south edge of T7N, SBM to the SE corner to T7N, R21W, SBM. Continue N along East side of R21W, SBM to Ventura County and Kern County boundary at the NE corner of T8N, R21W. Continue W along the Ventura County and Kern County boundary to the SE corner of T9N, R21W. Continue North along the East edge of R21W, SBM to the NE corner of T12N, R21W, SBM. Continue West along the north edge of T12N, SBM to the SE corner of T32S, R21E, MDM. [T12N SBM is a think strip between T11N SBM and T32S MDM]. Continue North along the East side of R21E, MDM to the Kings County and Kern County border at the NE corner of T25S, R21E, MDM, continue West along the Kings County and Kern County Boundary until the intersection of San Luis Obispo County. Continue west along the Kings County and San Luis Obispo County boundary until the intersection with Monterey County. Continue West along the Monterey County and San Luis Obispo County boundary to the beginning point at the NW corner of T25S, R16E, MDM.

\$2.00 additional per hour for INYO and MONO Counties and the Northern portion of SAN BERNARDINO County as defined below:

That area within the following Boundary: Begin at the intersection of the northern boundary of Mono County and the California state line at the point which is the center of

Section 17, T10N, R22E, Mt. Diablo Meridian. Continue S then SE along the entire western boundary of Mono County, until it reaches Inyo County at the point which is the NE corner of the Western half of the NW quarter of Section 2, T8S, R29E, MDM. Continue SSE along the entire western boundary of Inyo County, until the intersection with Kern County at the point which is the SW corner of the SE 1/4 of Section 32, T24S, R37E, MDM. Continue E along the Inyo and Kern County boundary until the intersection with San Bernardino County at that point which is the SE corner of section 34, T24S, R40E, MDM. Continue E along the Inyo and San Bernardino County boundary until the point which is the NE corner of the Western half of the NW quarter of Section 6, T25S, R42E, MDM. Continue S to that point which is the SW corner of the NW quarter of Section 6, T27S, R42E, MDM. Continue E in a straight line to the California and Nevada state border at the point which is the NW corner of Section 1, T17N, R14E, San Bernardino Meridian. Then continue NW along the state line to the starting point, which is the center of Section 18, T10N, R22E, MDM.

REMAINING AREA NOT DEFINED ABOVE RECIEVES BASE RATE

-----  
 ENGI0012-004 08/01/2020

	Rates	Fringes
OPERATOR: Power Equipment		
(DREDGING)		
(1) Leverman.....	\$ 56.40	30.00
(2) Dredge dozer.....	\$ 50.43	30.00
(3) Deckmate.....	\$ 50.32	30.00
(4) Winch operator (stern winch on dredge).....	\$ 49.77	30.00
(5) Fireman-Oiler, Deckhand, Bargeman, Leveehand.....	\$ 49.23	30.00
(6) Barge Mate.....	\$ 49.84	30.00

-----  
 IRON0229-001 01/01/2022

	Rates	Fringes
IRONWORKER		
Fence Erector.....	\$ 39.83	25.31

Ornamental, Reinforcing and Structural.....	\$ 44.75	33.95
--	----------	-------

PREMIUM PAY:

\$6.00 additional per hour at the following locations:

China Lake Naval Test Station, Chocolate Mountains Naval Reserve-Niland, Edwards AFB, Fort Irwin Military Station, Fort Irwin Training Center-Goldstone, San Clemente Island, San Nicholas Island, Susanville Federal Prison, 29 Palms - Marine Corps, U.S. Marine Base - Barstow, U.S. Naval Air Facility - Sealey, Vandenberg AFB

\$4.00 additional per hour at the following locations:

Army Defense Language Institute - Monterey, Fallon Air Base, Naval Post Graduate School - Monterey, Yermo Marine Corps Logistics Center

\$2.00 additional per hour at the following locations:

Port Hueneme, Port Mugu, U.S. Coast Guard Station - Two Rock

-----  
LABO0089-001 07/01/2022

	Rates	Fringes
LABORER (BUILDING and all other Residential Construction)		
Group 1.....	\$ 37.68	22.44
Group 2.....	\$ 38.37	22.44
Group 3.....	\$ 39.12	22.44
Group 4.....	\$ 39.98	22.44
Group 5.....	\$ 41.60	22.44
LABORER (RESIDENTIAL CONSTRUCTION - See definition below)		
(1) Laborer.....	\$ 35.58	20.77
(2) Cleanup, Landscape, Fencing (Chain Link & Wood).	\$ 34.29	20.77

RESIDENTIAL DEFINITION: Wood or metal frame construction of single family residences, apartments and condominiums - excluding (a) projects that exceed three stories over a

garage level, (b) any utility work such as telephone, gas, water, sewer and other utilities and (c) any fine grading work, utility work or paving work in the future street and public right-of-way; but including all rough grading work at the job site behind the existing right of way

## LABORER CLASSIFICATIONS

GROUP 1: Cleaning and handling of panel forms; Concrete Screeding for Rought Strike-off; Concrete, water curing; Demolition laborer; Flagman; Gas, oil and/or water pipeline laborer; General Laborer; General clean-up laborer; Landscape laborer; Jetting laborer; Temporary water and air lines laborer; Material hoseman (walls, slabs, floors and decks); Plugging, filling of Shee-bolt holes; Dry packing of concrete; Railroad maintenance, Repair Trackman and road beds, Streetcar and railroad construction trac laborers; Slip form raisers; Slurry seal crews (mixer operator, applicator operator, squeegee man, Shuttle man, top man), filling of cracks by any method on any surface; Tarman and mortar man; Tool crib or tool house laborer; Window cleaner; Wire Mesh puling-all concrete pouring operations

GROUP 2: Asphalt Shoveler; Cement Dumper (on 1 yard or larger mixer and handling bulk cement); Cesspool digger and installer; Chucktender; Chute man, pouring concrete, the handling of the cute from ready mix trucks, such as walls, slabs, decks, floors, foundations, footings, curbs, gutters and sidewalks; Concrete curer-impervious membrane and form oiler; Cutting torch operator (demoliton); Guinea chaser; Headboard man-asphlt; Laborer, packing rod steel and pans; membrane vapor barrier installer; Power broom sweepers (small); Riiprap, stonepaver, placing stone or wet sacked concrete; Roto scraper and tiller; Tank sealer and cleaner; Tree climber, faller, chain saw operator, Pittsburgh Chipper and similar type brush shredders; Underground laborers, including caisson bellower

GROUP 3: Buggymobile; Concrete cutting torch; Concrete cutting torch; Concrete pile cutter; Driller, jackhammer, 2 1/2 feet drill steel or longer; Dri Pak-it machine; High sealer (including drilling of same); Hydro seeder and similar type; Impact wrench, mult-plate; Kettlemen, potmen and mean applying asphalt, lay-kold, creosote, line caustic and similar type materials (applying means applying, dipping, brushing or handling of such materials for pipe



wrapping and waterproofing); Operators of pneumatic, gas, electric tools, vibratring machines, pavement breakers, air blasting, come-along, and similar mechanical tools not separately classified herein; Pipelayers back up man coating, grouting, making of joints, sealing, caulking, diapering and inclduing rubber gasket joints, pointing and any and all other services; Rotary Scarifier or multiple head concrete chipping scaarifier; Steel header board man and guideline setter; Tampers, Barko, Wacker and similar type; Trenching machine, handpropelled

GROUP 4: Asphalt raker, luterman, ironer, apshalt dumpman and asphalt spreader boxes (all types); Concrete core cutter (walls, floors or ceilings), Grinder or sander; Concrete saw man; cutting walls or flat work, scoring old or new concrete; Cribber, shorer, lagging, sheeting and trench bracing, hand-guided lagging hammer; Laser beam in connection with laborer's work; Oversize concrete vibrator operator 70 pounds and over; Pipelayer performing all services in the laying, installation and all forms of connection of pipe from the point of receiving pipe in the ditch until completion of oepration, including any and all forms of tubular material, whether pipe, metallic or non-metallic, conduit, and any other stationary type of tubular device used for the conveying of any substance or element, whether water, sewage, solid, gas, air or other product whatsoever and without regard to the nature of material from which the tubular material is fabricated; No joint pipe and stripping of same; Prefabricated manhole installer; Sandblaster (nozzleman), Porta shot-blast, water blasting

GROUP 5: Blasters Powderman-All work of loading holes, placing and blasting of all pwder and explosives of whatever type, regardless of method used for such loading and placing; Driller-all power drills, excluding jackhammer, whether core, diamond, wagon, track, multiple unit, and any and all other types of mechanical drills without regard to the form of motive power.

-----  
LABO0089-002 11/01/2020

	Rates	Fringes
LABORER (MASON TENDER).....	\$ 33.00	19.23

-----

## HEAVY AND HIGHWAY CONSTRUCTION

	Rates	Fringes
Laborers:		
Group 1.....	\$ 38.80	22.44
Group 2.....	\$ 39.27	22.44
Group 3.....	\$ 39.72	22.44
Group 4.....	\$ 40.62	22.44
Group 5.....	\$ 43.58	22.44

## LABORER CLASSIFICATIONS

GROUP 1: Laborer: General or Construction Laborer, Landscape Laborer. Asphalt Rubber Material Loader. Boring Machine Tender (outside), Carpenter Laborer (cleaning, handling, oiling & blowing of panel forms and lumber), Concrete Laborer, Concrete Screeding for rough strike-off, Concrete water curing. Concrete Curb & Gutter laborer, Certified Confined Space Laborer, Demolition laborer & Cleaning of Brick and lumber, Expansion Joint Caulking; Environmental Remediation, Monitoring Well, Toxic waste and Geotechnical Drill tender, Fine Grader, Fire Watcher, Limbers, Brush Loader, Pilers and Debris Handlers. flagman. Gas Oil and Water Pipeline Laborer. Material Hoseman (slabs, walls, floors, decks); Plugging, filling of shee bolt holes; Dry packing of concrete and patching; Post Holer Digger (manual); Railroad maintenance, repair trackman, road beds; Rigging & signaling; Scaler, Slip-Form Raisers, Filling cracks on any surface, tool Crib or Tool House Laborer, Traffic control (signs, barriers, barricades, delineator, cones etc.), Window Cleaner

GROUP 2: Asphalt abatement; Buggymobile; Cement dumper (on 1 yd. or larger mixers and handling bulk cement); Concrete curer, impervious membrane and form oiler; Chute man, pouring concrete; Concrete cutting torch; Concrete pile cutter; driller/Jackhammer, with drill steel 2 1/2 feet or longer; Dry pak-it machine; Fence erector; Pipeline wrapper, gas, oil, water, pot tender & form man; Grout man; Installation of all asphalt overlay fabric and materials used for reinforcing asphalt; Irrigation laborer; Kettleman-Potman hot mop, includes applying asphalt, lay-klold, creosote, lime caustic and similar tyhpes of materials (dipping, brushing, handling) and waterproofing;

Membrane vapor barrier installer; Pipelayer backup man (coating, grouting, making of joints, sealing caulking, diapering including rubber basket joints, pointing); Rotary scarifier, multiple head concrete chipper; Rock slinger; Roto scraper & tiller; Sandblaster pot tender; Septic tank digger/installer; Tamper/wacker operator; Tank scaler & cleaner; Tar man & mortar man; Tree climber/faller, chainb saw operator, Pittsburgh chipper & similar type brush shredders.

GROUP 3: Asphalt, installation of all frabrics; Buggy Mobile Man, Bushing hammer; Compactor (all types), Concrete Curer - Impervious membrane, Form Oiler, Concrete Cutting Torch, Concrete Pile Cutter, Driller/Jackhammer with drill steel 2 1/2 ft or longer, Dry Pak-it machine, Fence erector including manual post hole digging, Gas oil or water Pipeline Wrapper - 6 ft pipe and over, Guradrail erector, Hydro seeder, Impact Wrench man (multi plate), kettleman-Potman Hot Mop includes applying Asphalt, Lay-Kold, Creosote, lime caustic and similar types of materials (dipping, brushing or handling) and waterproofing. Laser Beam in connection with Laborer work. High Scaler, Operators of Pneumatic Gas or Electric Tools, Vibrating Machines, Pavement Breakers, Air Blasting, Come-Alongs and similar mechanical tools, Remote-Controlled Robotic Tools in connection with Laborers work. Pipelayer Backup Man (Coating, grouting, m makeing of joints, sealing, caulking, diapering including rubber gasket joints, pointing and other services). Power Post Hole Digger, Rotary Scarifier (multiple head concrete chipper scarifier), Rock Slinger, Shot Blast equipment (8 to 48 inches), Steel Headerboard Man and Guideline Setter, Tamper/Wacker operator and similar types, Trenching Machine hand propelled.

GROUP 4: Any worker exposed to raw sewage. Asphalt Raker, Luteman, Asphalt Dumpman, Asphalt Spreader Boxes, Concrete Core Cutter, Concrete Saw Man, Cribber, Shorer, Head Rock Slinger. Installation of subsurface instrumentation, monitoring wells or points, remediation system installer; Laborer, asphalt-rubber distributor bootman; Oversize concrete vibrator operators, 70 pounds or over. Pipelayer, Prfefabricated Manhole Installer, Sandblast Nozzleman (Water Balsting-Porta Shot Blast), Traffic Lane Closure.

GROUP 5: Blasters Powderman-All work of loading holes, placing and blasting of all powder and explosives of

whatever type, regardless of method used for such loading and placing; Horizontal directional driller, Boring system, Electronic tracking, Driller: all power drills excluding jackhammer, whether core, diamond, wagon, track, multiple unit, and all other types of mechanical drills without regard to form of motive power. Environmental remediation, Monitoring well, Toxic waste and Geotechnical driller, Toxic waste removal. Welding in connection with Laborer's work.

-----  
LABO0300-005 08/01/2022

	Rates	Fringes
Asbestos Removal Laborer.....	\$ 39.23	23.28

SCOPE OF WORK: Includes site mobilization, initial site cleanup, site preparation, removal of asbestos-containing material and toxic waste, encapsulation, enclosure and disposal of asbestos- containing materials and toxic waste by hand or with equipment or machinery; scaffolding, fabrication of temporary wooden barriers and assembly of decontamination stations.

-----  
LABO0345-001 07/01/2022

	Rates	Fringes
LABORER (GUNITE)		
GROUP 1.....	\$ 48.50	21.37
GROUP 2.....	\$ 47.55	21.37
GROUP 3.....	\$ 44.01	21.37

FOOTNOTE: GUNITE PREMIUM PAY: Workers working from a Bosn'n's Chair or suspended from a rope or cable shall receive 40 cents per hour above the foregoing applicable classification rates. Workers doing gunitite and/or shotcrete work in a tunnel shall receive 35 cents per hour above the foregoing applicable classification rates, paid on a portal-to-portal basis. Any work performed on, in or above any smoke stack, silo, storage elevator or similar type of structure, when such structure is in excess of 75'-0"" above base level and which work must be performed in whole or in part more than 75'-0"" above base level, that work performed above the 75'-0"" level shall be compensated

for at 35 cents per hour above the applicable  
classification wage rate.

GUNITE LABORER CLASSIFICATIONS

GROUP 1: Rodmen, Nozzlemen

GROUP 2: Gunmen

GROUP 3: Reboundmen

-----  
LABO1184-001 07/01/2022

	Rates	Fringes
Laborers: (HORIZONTAL DIRECTIONAL DRILLING)		
(1) Drilling Crew Laborer...	\$ 40.69	18.25
(2) Vehicle Operator/Hauler.	\$ 40.86	18.25
(3) Horizontal Directional Drill Operator.....	\$ 42.71	18.25
(4) Electronic Tracking Locator.....	\$ 44.71	18.25
Laborers: (STRIPING/SLURRY SEAL)		
GROUP 1.....	\$ 41.90	21.32
GROUP 2.....	\$ 43.20	21.32
GROUP 3.....	\$ 45.21	21.32
GROUP 4.....	\$ 46.95	21.32

LABORERS - STRIPING CLASSIFICATIONS

GROUP 1: Protective coating, pavement sealing, including  
repair and filling of cracks by any method on any surface  
in parking lots, game courts and playgrounds; carstops;  
operation of all related machinery and equipment; equipment  
repair technician

GROUP 2: Traffic surface abrasive blaster; pot tender -  
removal of all traffic lines and markings by any method  
(sandblasting, waterblasting, grinding, etc.) and  
preparation of surface for coatings. Traffic control  
person: controlling and directing traffic through both  
conventional and moving lane closures; operation of all  
related machinery and equipment

GROUP 3: Traffic delineating device applicator: Layout and

application of pavement markers, delineating signs, rumble and traffic bars, adhesives, guide markers, other traffic delineating devices including traffic control. This category includes all traffic related surface preparation (sandblasting, waterblasting, grinding) as part of the application process. Traffic protective delineating system installer: removes, relocates, installs, permanently affixed roadside and parking delineation barricades, fencing, cable anchor, guard rail, reference signs, monument markers; operation of all related machinery and equipment; power broom sweeper

GROUP 4: Striper: layout and application of traffic stripes and markings; hot thermo plastic; tape traffic stripes and markings, including traffic control; operation of all related machinery and equipment

-----  
LABO1414-003 08/03/2022

	Rates	Fringes
LABORER		
PLASTER CLEAN-UP LABORER....	\$ 38.92	23.32
PLASTER TENDER.....	\$ 41.47	23.32

Work on a swing stage scaffold: \$1.00 per hour additional.

Work at Military Bases - \$3.00 additional per hour:

Coronado Naval Amphibious Base, Fort Irwin, Marine Corps Air Station-29 Palms, Imperial Beach Naval Air Station, Marine Corps Logistics Supply Base, Marine Corps Pickle Meadows, Mountain Warfare Training Center, Naval Air Facility-Seeley, North Island Naval Air Station, Vandenberg AFB.

-----  
PAIN0036-001 07/01/2020

	Rates	Fringes
Painters: (Including Lead Abatement)		
(1) Repaint (excludes San Diego County).....	\$ 29.59	17.12
(2) All Other Work.....	\$ 33.12	17.24

REPAINT of any previously painted structure. Exceptions:  
work involving the aerospace industry, breweries,  
commercial recreational facilities, hotels which operate  
commercial establishments as part of hotel service, and  
sports facilities.

-----  
PAIN0036-010 09/01/2022

	Rates	Fringes
DRYWALL FINISHER/TAPER		
(1) Building & Heavy Construction.....	\$ 39.54	21.50
(2) Residential Construction (Wood frame apartments, single family homes and multi-duplexes up to and including four stories).....	\$ 32.27	14.70

-----  
PAIN0036-012 10/01/2022

	Rates	Fringes
GLAZIER.....	\$ 47.90	20.71

-----  
PAIN0036-019 06/01/2022

	Rates	Fringes
SOFT FLOOR LAYER.....	\$ 34.77	17.89

-----  
PLAS0200-005 08/03/2022

	Rates	Fringes
PLASTERER.....	\$ 47.37	19.64

NORTH ISLAND NAVAL AIR STATION, COLORADO NAVAL AMPHIBIOUS  
BASE, IMPERIAL BEACH NAVAL AIR STATION: \$3.00 additional  
per hour.

-----  
PLAS0500-001 07/01/2018

	Rates	Fringes
--	-------	---------

CEMENT MASON/CONCRETE FINISHER

GROUP 1.....	\$ 26.34	19.77
GROUP 2.....	\$ 27.99	19.77
GROUP 3.....	\$ 30.07	21.12

CEMENT MASONS - work inside the building line, meeting the following criteria:

GROUP 1: Residential wood frame project of any size; work classified as Type III, IV or Type V construction; interior tenant improvement work regardless the size of the project; any wood frame project of four stories or less.

GROUP 2: Work classified as type I and II construction

GROUP 3: All other work

-----  
PLUM0016-006 09/01/2022

	Rates	Fringes
PLUMBER, PIPEFITTER, STEAMFITTER		
Camp Pendleton; Vandenberg Air Force Base.....	\$ 59.68	26.26
Work ONLY on new additions and remodeling of commercial buildings, bars, restaurants, and stores not to exceed 5,000 sq. ft. of floor space.....	\$ 53.51	25.28
Work ONLY on strip malls, light commercial, tenant improvement and remodel work.....	\$ 40.95	23.61
All other work except work on new additions and remodeling of bars, restaurant, stores and commercial buildings not to exceed 5,000 sq. ft. of floor space and work on strip malls, light commercial, tenant improvement and remodel		



work.....	\$ 55.18	26.26
-----		
PLUM0016-011 09/01/2022		
	Rates	Fringes
PLUMBER/PIPEFITTER		
Residential.....	\$ 43.66	22.18
-----		
PLUM0345-001 09/01/2022		
	Rates	Fringes
PLUMBER		
Landscape/Irrigation Fitter..	\$ 38.20	25.65
Sewer & Storm Drain Work....	\$ 42.29	23.03
-----		
ROOF0045-001 07/01/2022		
	Rates	Fringes
ROOFER.....	\$ 39.90	11.19
-----		
SFCA0669-001 04/01/2022		
	Rates	Fringes
SPRINKLER FITTER.....	\$ 44.99	25.16
-----		
SHEE0206-001 07/01/2020		
	Rates	Fringes
SHEET METAL WORKER		
Camp Pendleton.....	\$ 42.62	29.55
Except Camp Pendleton.....	\$ 40.62	29.55
Sheet Metal Technician.....	\$ 30.51	9.49

SHEET METAL TECHNICIAN - SCOPE:

a. Existing residential buildings, both single and multi-family, where each unit is heated and/or cooled by a separate system b. New single family residential buildings including tracts. c. New multi-family residential buildings, not exceeding five stories of living space in height, provided each unit is heated or cooled by a separate system. Hotels and motels are excluded. d. LIGHT COMMERCIAL WORK: Any sheet metal, heating and air conditioning work performed on a project

where the total construction cost, excluding land, is under \$1,000,000 e. TENANT IMPROVEMENT WORK: Any work necessary to finish interior spaces to conform to the occupants of commercial buildings, after completion of the building shell

-----  
TEAM0166-001 07/01/2022

	Rates	Fringes
Truck drivers:		
GROUP 1.....	\$ 28.15	24.82
GROUP 2.....	\$ 38.74	24.82
GROUP 3.....	\$ 38.94	24.82
GROUP 4.....	\$ 39.14	24.82
GROUP 5.....	\$ 39.34	24.82
GROUP 6.....	\$ 39.83	24.82
GROUP 7.....	\$ 41.34	24.82

FOOTNOTE: HAZMAT PAY: Work on a hazmat job, where hazmat certification is required, shall be paid, in addition to the classification working in, as follows: Levels A, B and C - +\$1.00 per hour. Workers shall be paid hazmat pay in increments of four (4) and eight (8) hours.

#### TRUCK DRIVER CLASSIFICATIONS

GROUP 1: Fuel Man, Swamper

GROUP 2: 2-axle Dump Truck, 2-axle Flat Bed, Concrete Pumping Truck, Industrial Lift Truck, Motorized Traffic Control, Pickup Truck on Jobsite

GROUP 3: 2-axle Water Truck, 3-axle Dump Truck, 3-axle Flat Bed, Erosion Control Nozzleman, Dump Crete Truck under 6.5 yd, Forklift 15,000 lbs and over, Prell Truck, Pipeline Work Truck Driver, Road Oil Spreader, Cement Distributor or Slurry Driver, Bootman, Ross Carrier

GROUP 4: Off-road Dump Truck under 35 tons 4-axles but less than 7-axles, Low-Bed Truck & Trailer, Transit Mix Trucks under 8 yd, 3-axle Water Truck, Erosion Control Driver, Grout Mixer Truck, Dump Crete 6.5yd and over, Dumpster Trucks, DW 10, DW 20 and over, Fuel Truck and Dynamite, Truck Greaser, Truck Mounted Mobile Sweeper 2-axle Winch Truck

GROUP 5: Off-road Dump Truck 35 tons and over, 7-axles or more, Transit Mix Trucks 8 yd and over, A-Frame Truck, Swedish Cranes

GROUP 6: Off-Road Special Equipment (including but not limited to Water Pull Tankers, Athey Wagons, DJB, B70 Wuclids or like Equipment)

GROUP 7: Repairman

-----

WELDERS - Receive rate prescribed for craft performing operation to which welding is incidental.

=====

Note: Executive Order (EO) 13706, Establishing Paid Sick Leave for Federal Contractors applies to all contracts subject to the Davis-Bacon Act for which the contract is awarded (and any solicitation was issued) on or after January 1, 2017. If this contract is covered by the EO, the contractor must provide employees with 1 hour of paid sick leave for every 30 hours they work, up to 56 hours of paid sick leave each year. Employees must be permitted to use paid sick leave for their own illness, injury or other health-related needs, including preventive care; to assist a family member (or person who is like family to the employee) who is ill, injured, or has other health-related needs, including preventive care; or for reasons resulting from, or to assist a family member (or person who is like family to the employee) who is a victim of, domestic violence, sexual assault, or stalking. Additional information on contractor requirements and worker protections under the EO is available at <https://www.dol.gov/agencies/whd/government-contracts>.

Unlisted classifications needed for work not included within the scope of the classifications listed may be added after award only as provided in the labor standards contract clauses (29CFR 5.5 (a) (1) (ii)).

-----

The body of each wage determination lists the classification and wage rates that have been found to be prevailing for the cited type(s) of construction in the area covered by the wage determination. The classifications are listed in alphabetical

order of "identifiers" that indicate whether the particular rate is a union rate (current union negotiated rate for local), a survey rate (weighted average rate) or a union average rate (weighted union average rate).

#### Union Rate Identifiers

A four letter classification abbreviation identifier enclosed in dotted lines beginning with characters other than "SU" or "UAVG" denotes that the union classification and rate were prevailing for that classification in the survey. Example: PLUM0198-005 07/01/2014. PLUM is an abbreviation identifier of the union which prevailed in the survey for this classification, which in this example would be Plumbers. 0198 indicates the local union number or district council number where applicable, i.e., Plumbers Local 0198. The next number, 005 in the example, is an internal number used in processing the wage determination. 07/01/2014 is the effective date of the most current negotiated rate, which in this example is July 1, 2014.

Union prevailing wage rates are updated to reflect all rate changes in the collective bargaining agreement (CBA) governing this classification and rate.

#### Survey Rate Identifiers

Classifications listed under the "SU" identifier indicate that no one rate prevailed for this classification in the survey and the published rate is derived by computing a weighted average rate based on all the rates reported in the survey for that classification. As this weighted average rate includes all rates reported in the survey, it may include both union and non-union rates. Example: SULA2012-007 5/13/2014. SU indicates the rates are survey rates based on a weighted average calculation of rates and are not majority rates. LA indicates the State of Louisiana. 2012 is the year of survey on which these classifications and rates are based. The next number, 007 in the example, is an internal number used in producing the wage determination. 5/13/2014 indicates the survey completion date for the classifications and rates under that identifier.

Survey wage rates are not updated and remain in effect until a new survey is conducted.

#### Union Average Rate Identifiers

Classification(s) listed under the UAVG identifier indicate that no single majority rate prevailed for those classifications; however, 100% of the data reported for the classifications was union data. EXAMPLE: UAVG-OH-0010 08/29/2014. UAVG indicates that the rate is a weighted union average rate. OH indicates the state. The next number, 0010 in the example, is an internal number used in producing the wage determination. 08/29/2014 indicates the survey completion date for the classifications and rates under that identifier.

A UAVG rate will be updated once a year, usually in January of each year, to reflect a weighted average of the current negotiated/CBA rate of the union locals from which the rate is based.

---

#### WAGE DETERMINATION APPEALS PROCESS

1.) Has there been an initial decision in the matter? This can be:

- \* an existing published wage determination
- \* a survey underlying a wage determination
- \* a Wage and Hour Division letter setting forth a position on a wage determination matter
- \* a conformance (additional classification and rate) ruling

On survey related matters, initial contact, including requests for summaries of surveys, should be with the Wage and Hour National Office because National Office has responsibility for the Davis-Bacon survey program. If the response from this initial contact is not satisfactory, then the process described in 2.) and 3.) should be followed.

With regard to any other matter not yet ripe for the formal process described here, initial contact should be with the Branch of Construction Wage Determinations. Write to:

Branch of Construction Wage Determinations  
Wage and Hour Division  
U.S. Department of Labor  
200 Constitution Avenue, N.W.  
Washington, DC 20210

2.) If the answer to the question in 1.) is yes, then an interested party (those affected by the action) can request

review and reconsideration from the Wage and Hour Administrator (See 29 CFR Part 1.8 and 29 CFR Part 7). Write to:

Wage and Hour Administrator  
U.S. Department of Labor  
200 Constitution Avenue, N.W.  
Washington, DC 20210

The request should be accompanied by a full statement of the interested party's position and by any information (wage payment data, project description, area practice material, etc.) that the requestor considers relevant to the issue.

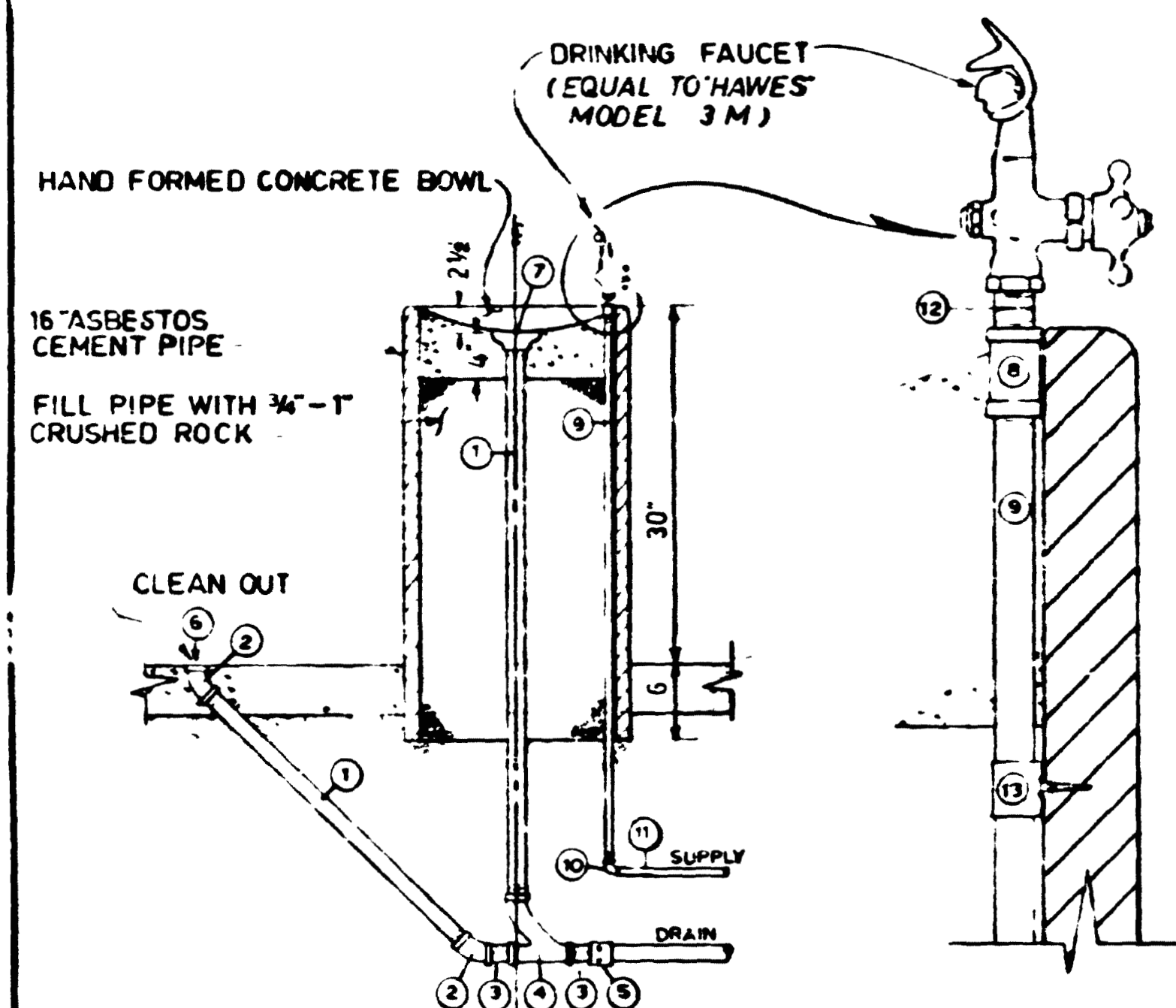
3.) If the decision of the Administrator is not favorable, an interested party may appeal directly to the Administrative Review Board (formerly the Wage Appeals Board). Write to:

Administrative Review Board  
U.S. Department of Labor  
200 Constitution Avenue, N.W.  
Washington, DC 20210

4.) All decisions by the Administrative Review Board are final.

=====

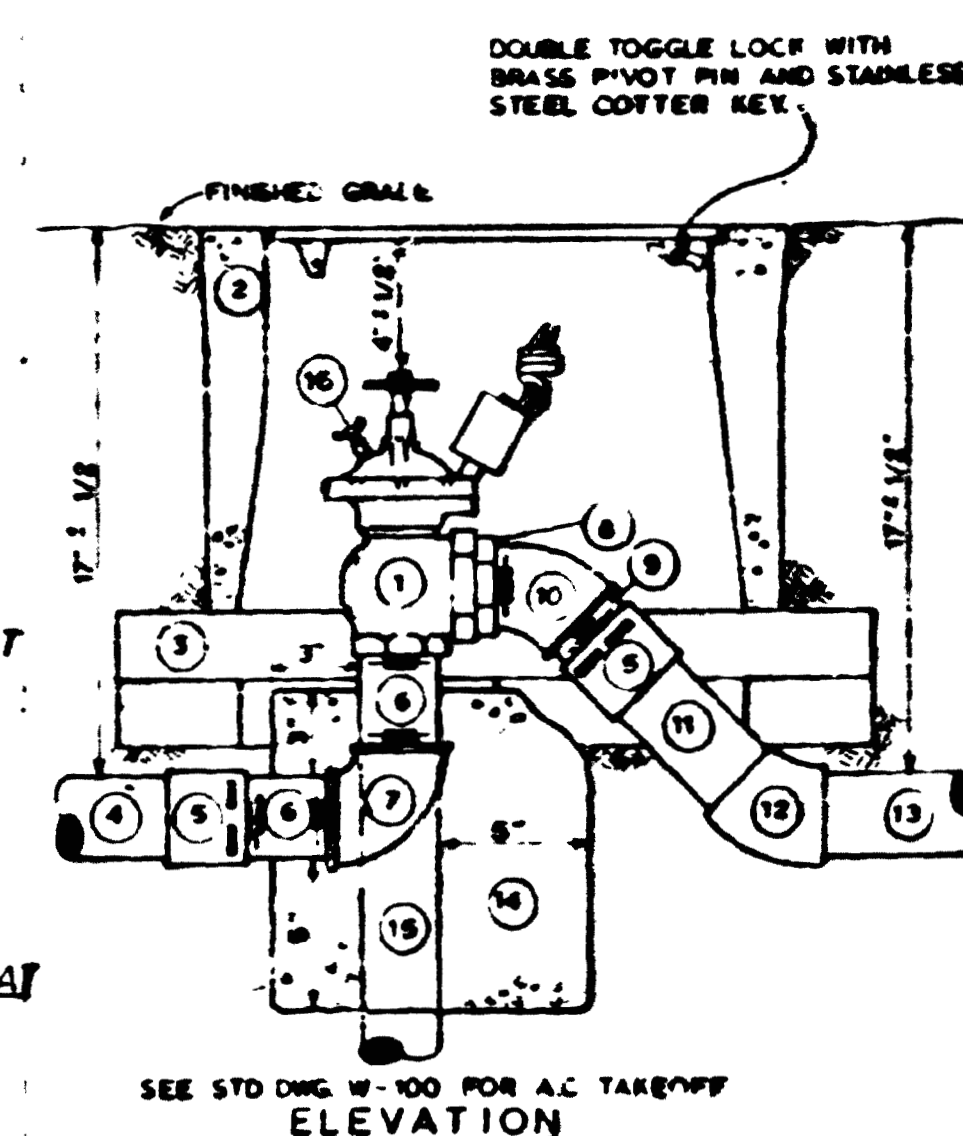
END OF GENERAL DECISIO"



## DRINKING FOUNTAIN

NO SCALE

- 1 1/2 GALVANIZED IRON PIPE
- 2 1/2 x 45° G.I. ELL.
- 3 1/2 x CLOSE G.I. NIPPLE
- 4 1/2 CAST IRON LONG TURN WYE
- 5 PVC ADAPTER - FIP x SLIP
- 6 1/2 BRASS FLUG - RECESSED TOP CLEAN OUT
- 7 ALL BRASS CHROME PLATED, SHOWER FLOOR DRAIN
- 8 1/2 RED BRASS COUPLING
- 9 1/2 RED BRASS PIPE
- 10 1/2 x 90° RED BRASS ELL (SLIP x THREAD)
- 11 1/2 COPPER PIPE TYPE "K"
- 12 1/2 x 1/2 RED BRASS NIPPLE, SCORE NIPPLE AT CENTER TO PROVIDE BREAK-A-WAY JOINT
- 13 PIPE STRAP AND 3/4 x N#8 SELF TAPPING SCREW FASTEN BRASS PIPE SECURELY TO ASBESTOS CEMENT AT 8" (MAXIMUM) INTERVALS

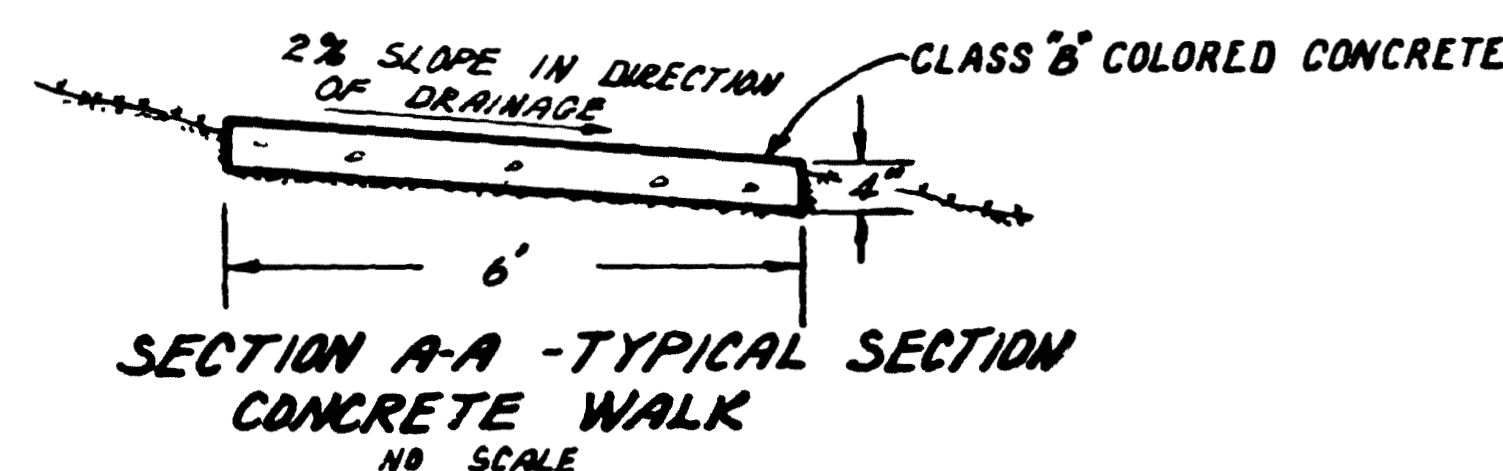
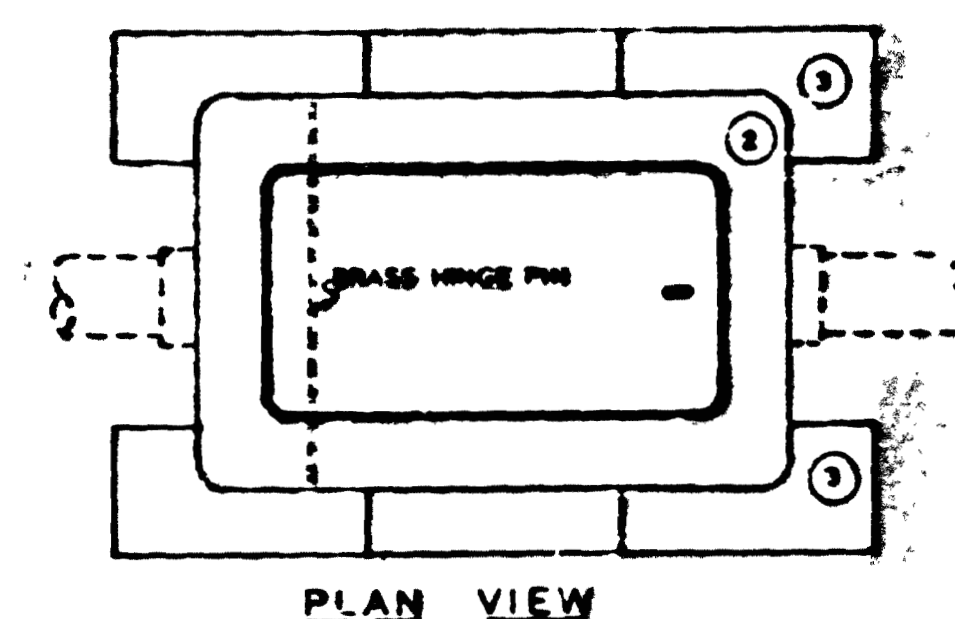


## AUTOMATIC CONTROL VALVE INSTALLATION

NO SCALE

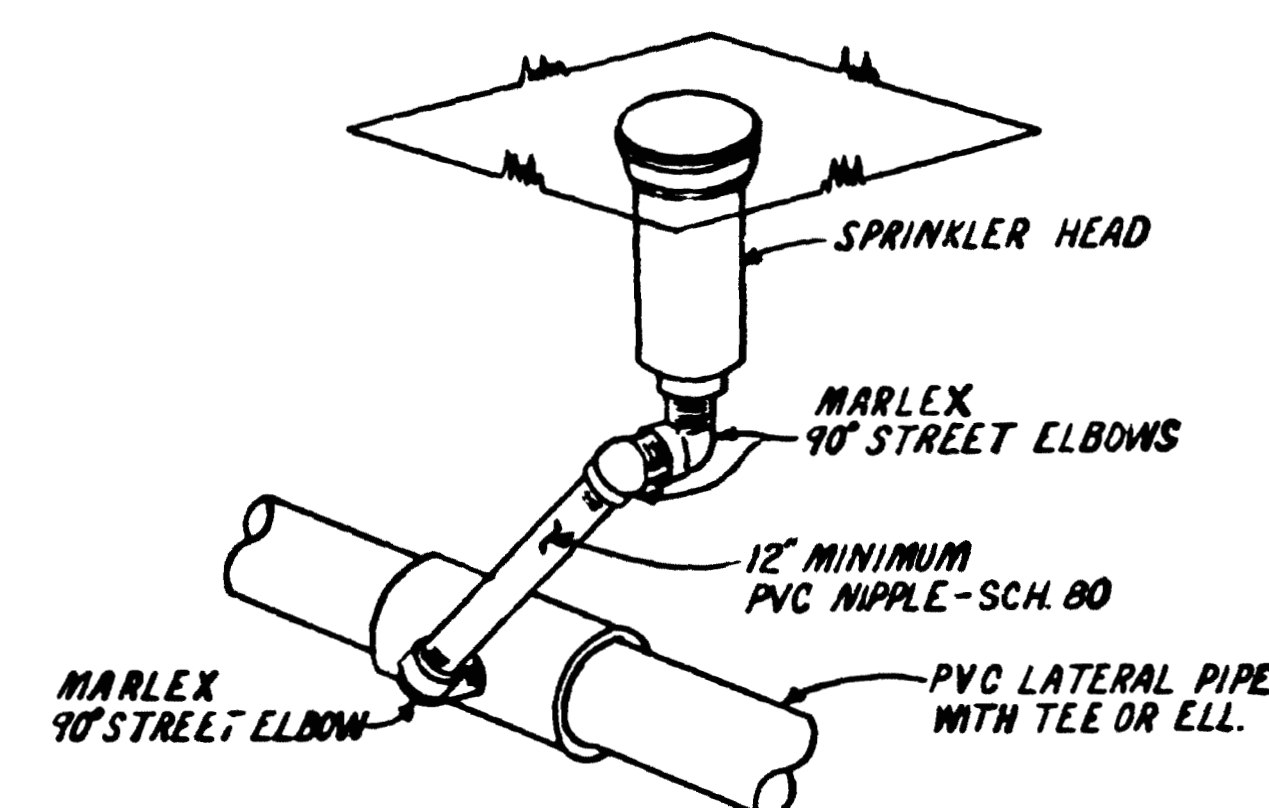
### EQUIPMENT KEY

- 1 AUTOMATIC CONTROL VALVE
- 2 3/4 x 1/2 CONCRETE METER BOX WITH HINGED LOCKABLE CAST IRON TOP
- 3 RED BRICK FOOTING - TWO COURSES MINIMUM - SIDES UP BOX ONLY
- 4 SUPPLY LINE
- 5 PVC ADAPTER
- 6 RED BRASS NIPPLE - 4" MINIMUM
- 7 RED BRASS 90° ELL.
- 8 RED BRASS UNION
- 9 RED BRASS NIPPLE - CLOSE
- 10 RED BRASS 45° STREET ELL
- 11 CLASS "B" PVC PIPE TO LENGTH
- 12 PVC 45° ELL.
- 13 BATTERY LINE
- 14 3/4 CUBIC FOOT OF CLASS "B" CONCRETE WHEN TAKEOFF IS FROM PVC SUPPLY LINE ONLY
- 15 RED BRASS RISER WHEN TAKEOFF IS FROM ASBESTOS CEMENT PIPE
- 16 BRASS BOILER PETCOCK FOR MANUAL OPERATION



## SECTION A-A - TYPICAL SECTION CONCRETE WALK

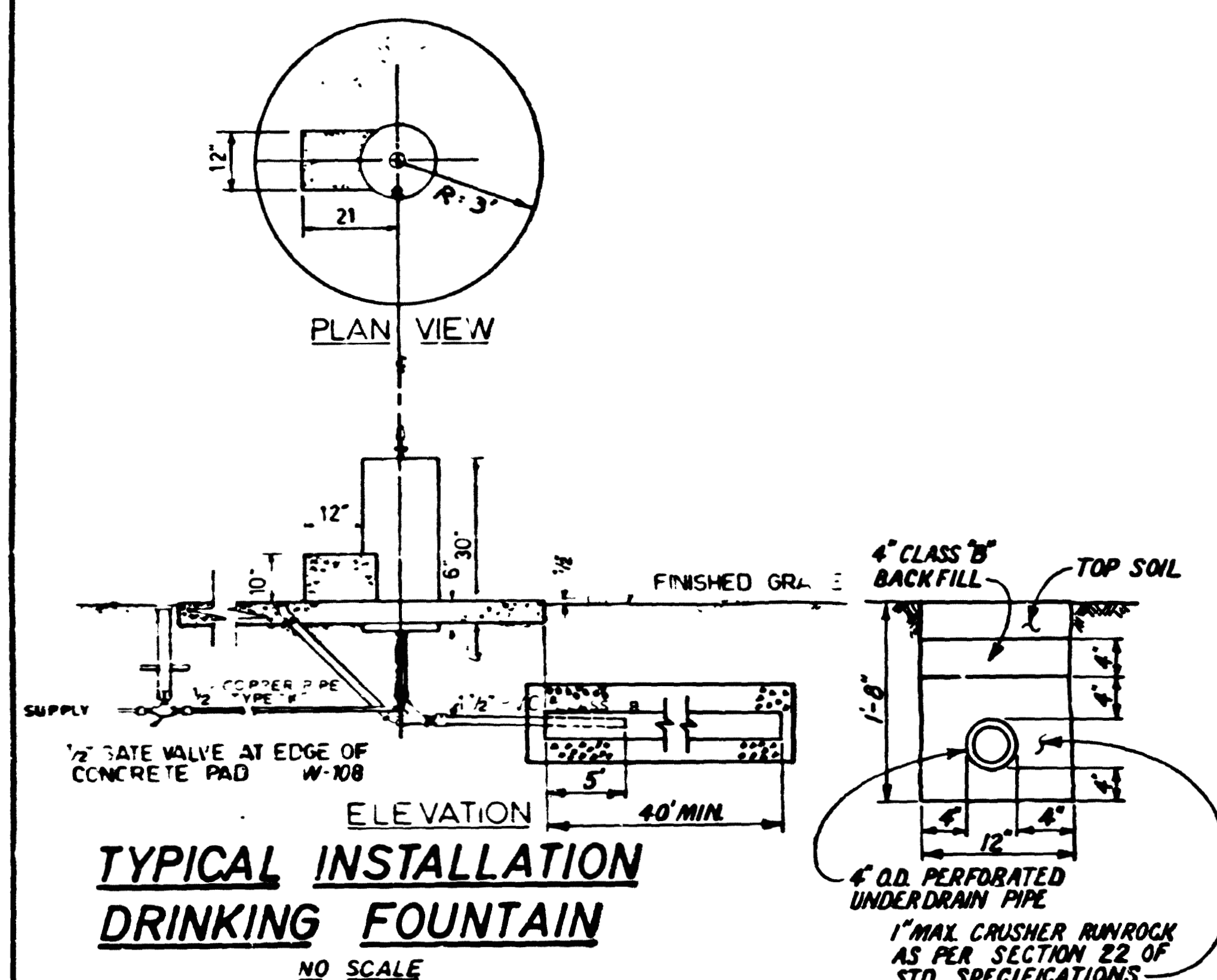
NO SCALE



## DETAIL - SPRINKLER HEAD INSTALLATION

SCALE: NONE

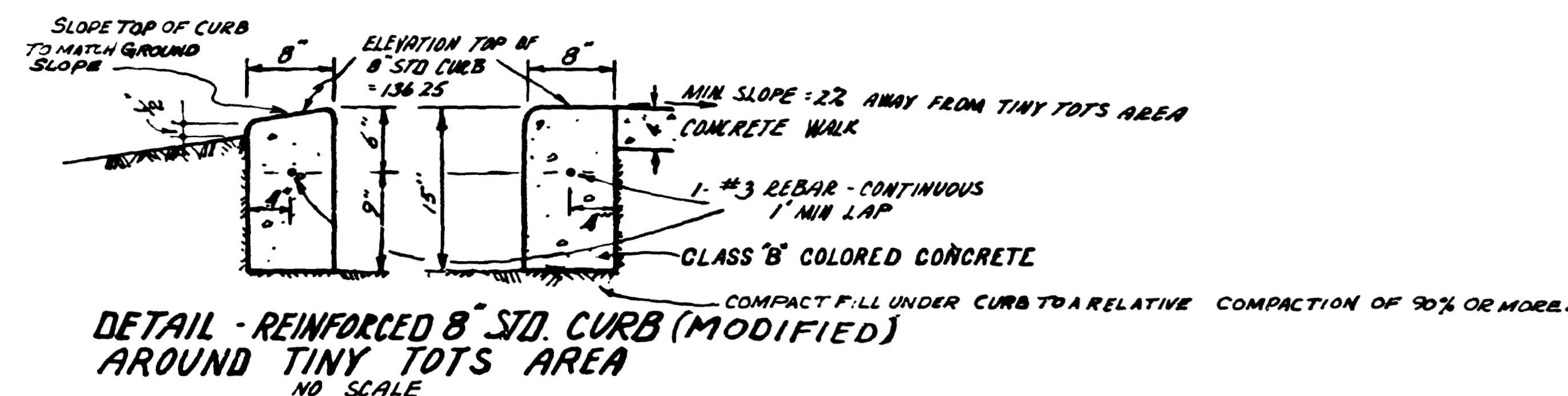
NOTE: HEADS SHALL BE INSTALLED FLUSH WITH FINISHED GRADE.  
HEADS SHALL BE INSTALLED AT GRADE WHEN NEXT TO IMPROVEMENT.  
USE TEFLON TAPE ON ALL TREADED CONNECTIONS.



## TYPICAL INSTALLATION DRINKING FOUNTAIN

NO SCALE

- NOTES
- 1 CONCRETE SHALL BE THE SAME CLASS AND COLOR AS ADJOINING CONCRETE.
  - 2 SLOPE STEP AND PAD AWAY FROM FOUNTAIN 1/4" PER FOOT.
  - 3 BROOM FINISH PAD, SCARIFY STEP
  - 4 DRAIN SHALL BE IN LAWN AREA
  - 5 DRINKING FAUCET SHALL BE INSTALLED FOR RIGHT HAND USE RELATIVE TO STEP.
  - 6 STEP SHALL BE PLACED INTO (TOWARD) THE PREVAILING WIND.



## DETAIL - REINFORCED 8" STD. CURB (MODIFIED) AROUND TINY TOTS AREA

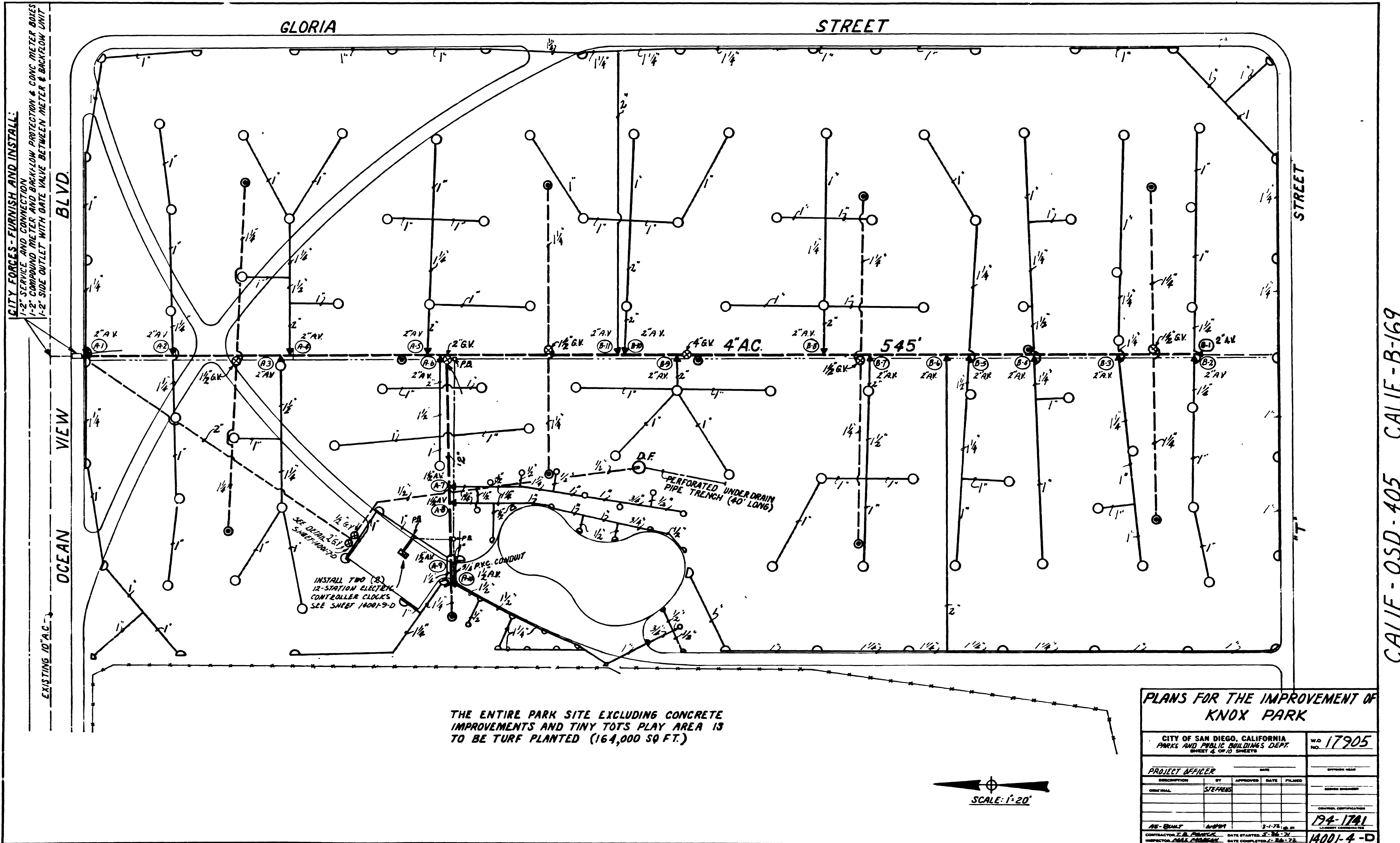
NO SCALE

## PLANS FOR THE IMPROVEMENT OF KNOX PARK

CITY OF SAN DIEGO, CALIFORNIA PARKS AND PUBLIC BUILDINGS DEPT. SHEET 5 OF 10 SHEETS	W.O. 17905 NO.
PROJECT OFFICER	DATE
DESCRIPTION	BY APPROVED DATE FILLED
ORIGINAL	STEFENS
DATE	3-1-72
CONTROL CERTIFICATION	194-1741
DATE	3-1-72
DATE STARTED	8-26-71
DATE COMPLETED	3-26-72
14001-3-D	

AS BUILT-1





PLANS FOR THE IMPROVEMENT OF KNOX PARK				
CITY OF SAN DIEGO, CALIFORNIA PARKS AND PUBLIC BUILDINGS DEPT. SHEET 4 OF 10 SHEETS				W.O. NO. 17905
PROJECT OFFICER				
DESCRIPTION	BY	APPROVED	DATE	FILED
CONTRACT	STEEBES			
CONTRACTOR				DATE COMPLETED
AS-BUILT				194-1741
CONTRACTOR J. B. PARKER				DATE COMPLETED 1-2-78
INSPECTOR J. B. PARKER				DATE COMPLETED 1-2-78



1/5/23

**RFI**

City of San Diego  
Purchasing & Contracting Department

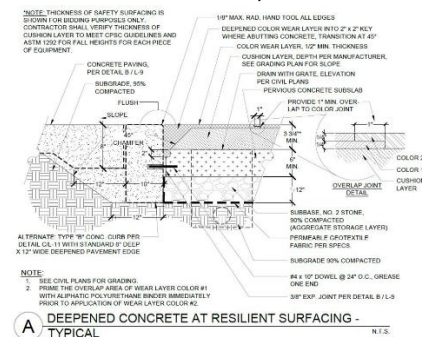
Attn: Brittany Friedenreich

Project Title: JFK Neighborhood Park Restroom & Playground Improvements  
Invitation #: K-23-2101-DBB-3  
Bid Due Date: 1/26/23 @ 2PM

Subject: RFI #1 - Playground Resilient Surfacing Edge Detail

In review of the project plans for the above referenced project, it was found that Details A, D & E on sheet L-9 dated 11/7/22 is not a manufacturer approved detail for the perimeter edge of the resilient surfacing. The letter below is an explanation of the resilient surfacing testing requirements that directly affect the thickened edge detail shown on plans. We are asking for approval of our standard edge detail, to be installed per manufacturer.

Reference: Sheet L-9, Detail A:



The edge installation outlined in this detail creates a surface that does not meet the standards for ASTM F1292 Fall Attenuation. This is due to the thickening of the colored granules over the 1/2" min. industry standard thickness, these granules are a more dense product and when thickened it lessens the attenuation of the overall system. Per ASTM F1292, Paragraph 4.3.3 requires the surfacing system to be installed on playgrounds identical in all ways as the system that is submitted and tested.

There is no testing to prove that this thickened edge detail prevents shrinking of the rubber surfacing. In fact the best way to prevent shrinking of the poured-in-place rubber surfacing is proper maintenance. We do recommend keeping the resilient surfacing clean of debris and applying a maintenance roll-coat every two years.

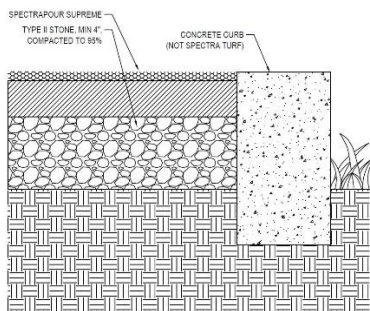
*4.3.3 The laboratory test used to determine critical fall height shall have been conducted on surfacing material samples identical in design, materials, components, thickness, and manufacture as the installed playground surface.*

By not installing the resilient surfacing in a uniform thickness up to the edge of the concrete curb, the surfacing would be in violation of ASTM F1292 and the playground will then be out of compliance with California laws. ASTM F1292 testing is required by law in the State of California for all safety surfacing installed in public playgrounds.

Specification Section 219-3 Resilient Rubber Surfacing, Section 1 Applicable Standards requires the playground resilient surfacing to be installed per ASTM F1292 along with requiring IPEMA certificates. The detail referenced in this letter is not a tested application by any manufacturer. Therefore, we are asking that the City allows for the installation on the edge to be per manufacturer, since the manufacturer holds all the required testing for the installation of their product.

SpectraTurf has found no safety surfacing manufacturers that include a detail as shown on Sheet L-9, Detail A with the thickened edge. As well as there are no manufacturers that have the required ASTM or IPEMA testing using this detail on the perimeter edge.

SpectraTurf is submitting our manufacturers approved detail for approval and utilization on this project. This is the industry standard detail that has been tested per the ASTM and IPEMA requirements noted within the specifications for this project.



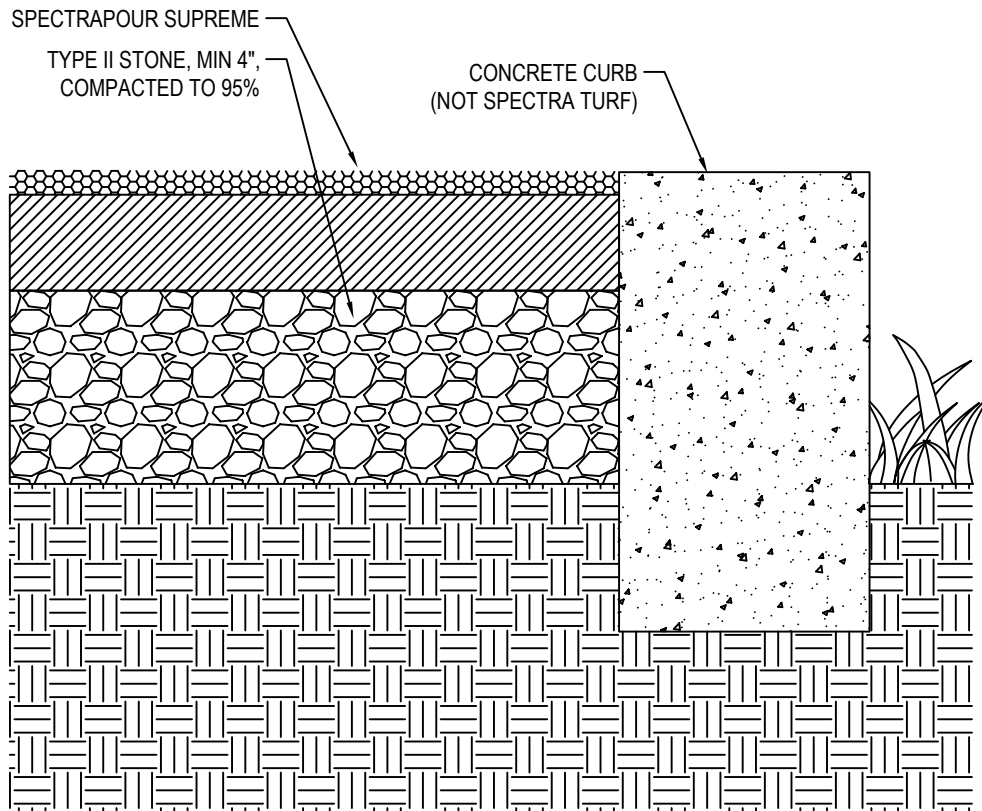
For further clarification regarding the Owners Responsibilities in following the manufacturer's instructions and installation procedures please refer to ASTM F1487.

*"Owners/Operators Responsibilities*

*The owner/operator or their designated representative shall follow the designer's and manufacturer's instructions and procedures to install all play structures and impact attenuating surfacing in accordance with appropriate standard specification and accessibility where applicable. Prior to the playground's first use, the owner/operator shall obtain written verification from a qualified person that the playground equipment and impact attenuating surfacing have been installed in accordance with the requirements."*

Playgrounds open to the public built by a public agency or any other entity shall conform to the playground related standards set forth by the American Society for Testing and Materials (ASTM) and the playground related guidelines set forth by the United States Consumer Product Safety Commission.

Sincerely,  
Kassi Hove  
SpectraTurf



SECTION

**NOTES:** INSTALLATION TO BE COMPLETED IN ACCORDANCE WITH MANUFACTURER'S SPECIFICATIONS.

2. DO NOT SCALE DRAWING.
3. THIS DRAWING IS INTENDED FOR USE BY ARCHITECTS, ENGINEERS, CONTRACTORS, CONSULTANTS AND DESIGN PROFESSIONALS FOR PLANNING PURPOSES ONLY. THIS DRAWING MAY NOT BE USED FOR CONSTRUCTION.
4. ALL INFORMATION CONTAINED HEREIN WAS CURRENT AT THE TIME OF DEVELOPMENT BUT MUST BE REVIEWED AND APPROVED BY THE PRODUCT MANUFACTURER TO BE CONSIDERED ACCURATE.
5. CONTRACTOR'S NOTE: FOR PRODUCT AND COMPANY INFORMATION VISIT [www.CADdetails.com/info](http://www.CADdetails.com/info) AND ENTER REFERENCE NUMBER 092-044

## SPECTRAPOUR SUPREME POUR-IN-PLACE

SPECTRAPOUR SUPREME: STANDARD CURB - FLUSH TO CONCRETE CURB OR WALL

PROTECTED BY COPYRIGHT ©2019 CADDETAILS.COM LTD.

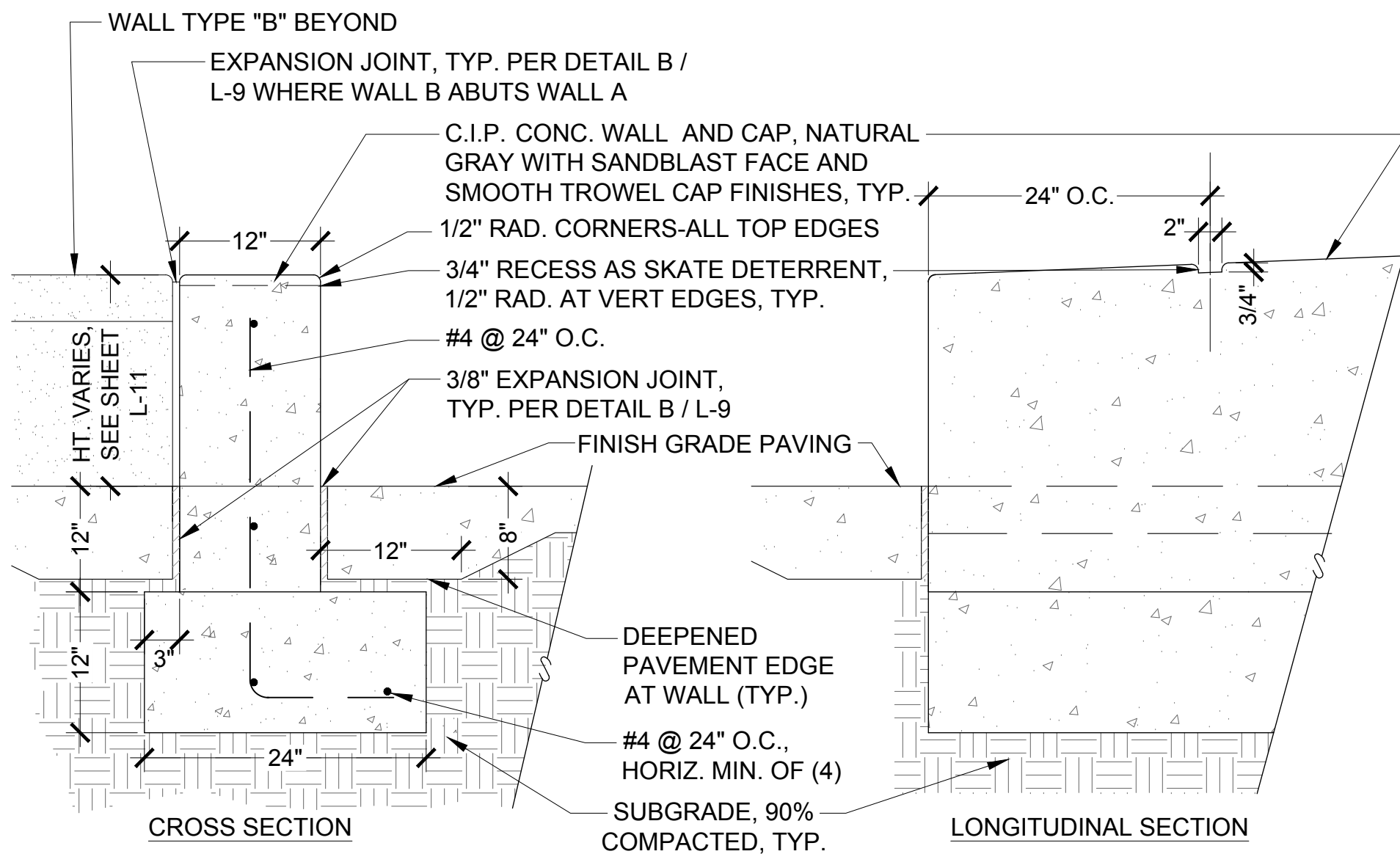
092-044

January 13, 2023

REVISION DATE 29/05/2019

CADdetails.com

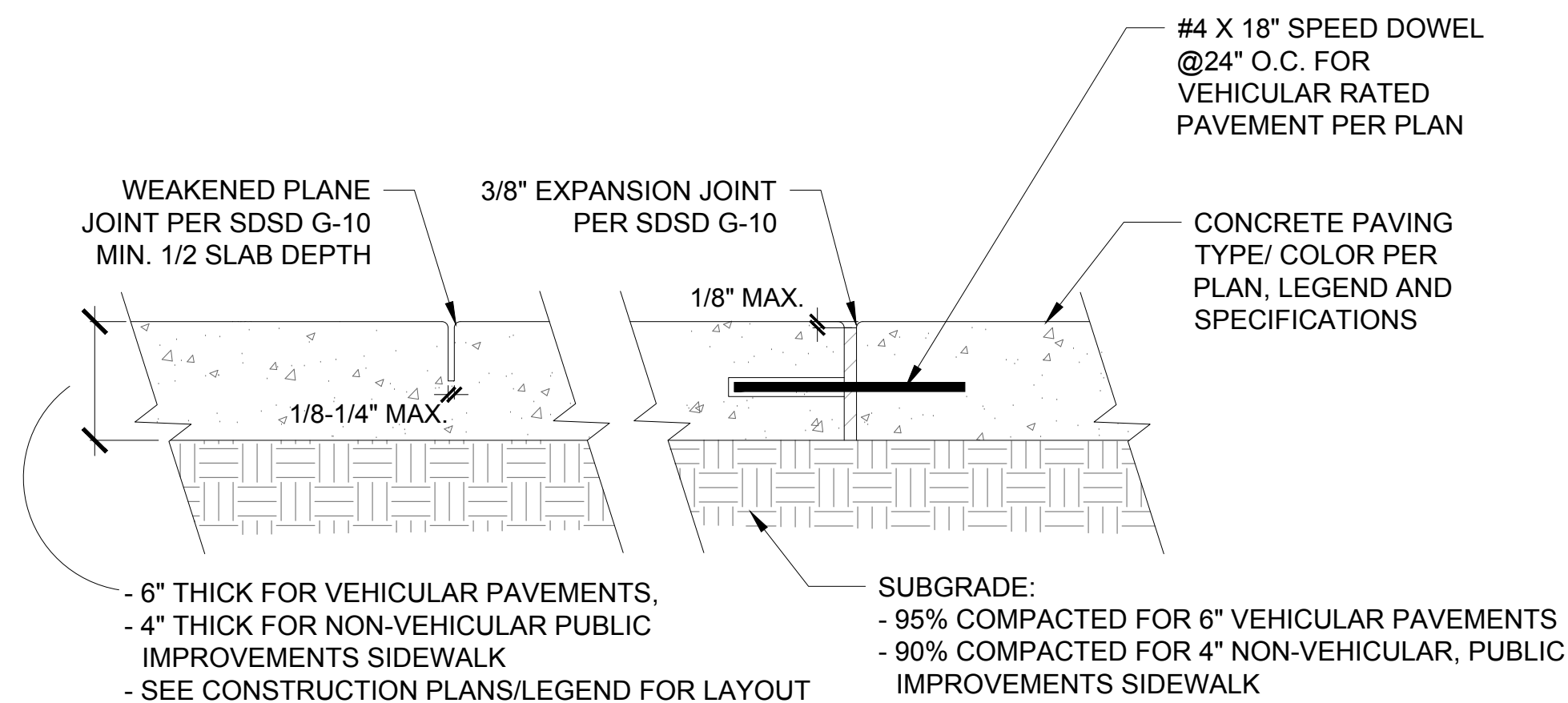




- NOTES:
1. SKATE DETERRENT RECESSES ARE INTENDED TO ALIGN WITH PAVING SCORES. COORDINATE LAYOUT WITH PAVING WORK.
  2. APPLY WATERPROOFING MEMBRANE WHERE IN CONTACT WITH SOIL.

C TYPE "A" WALL

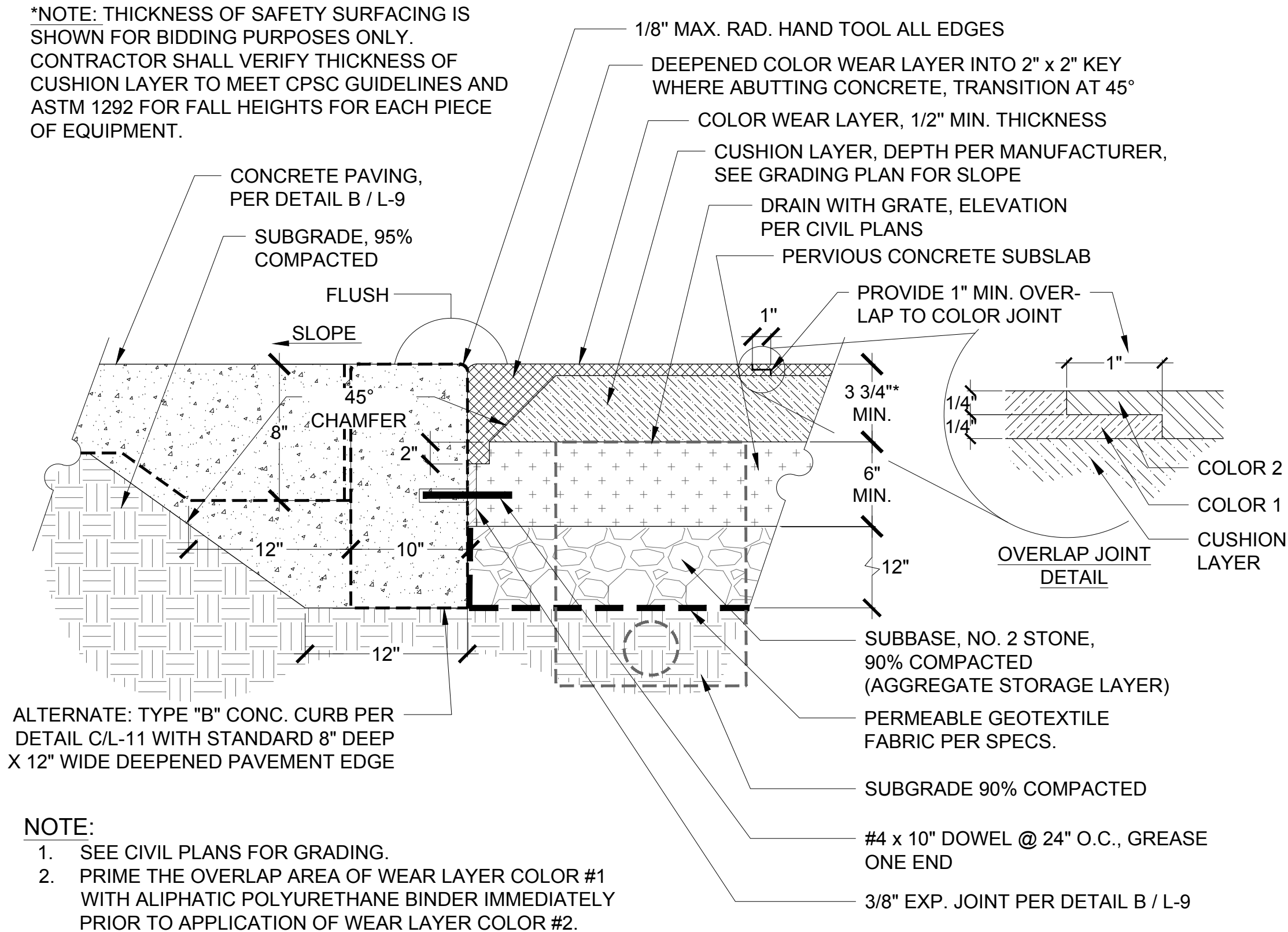
SCALE: N.T.S.



- NOTES:
1. PAVEMENT JOINTS PER SDSD G-10. MAXIMUM TOOLED RADIUS 1/8".
  2. INSTALL DOWELED EXPANSION JOINT BETWEEN SEPARATE POURS AND AS INDICATED ON PLANS.
  3. CONCRETE PSI PER SPECS.

B CONCRETE PAVING JOINTS - TYPICAL

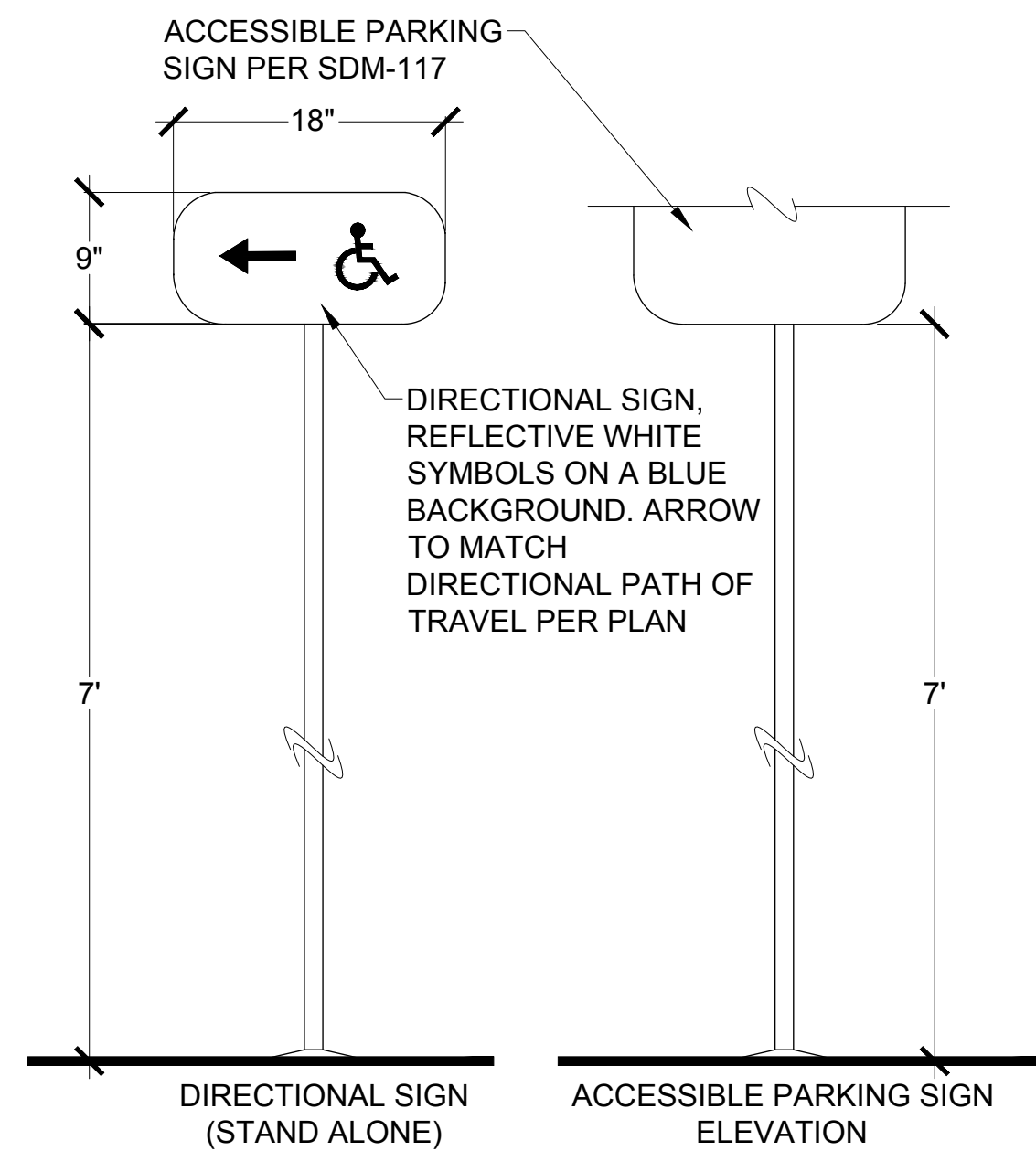
N.T.S.



- NOTE:
1. SEE CIVIL PLANS FOR GRADING.
  2. PRIME THE OVERLAP AREA OF WEAR LAYER COLOR #1 WITH ALIPHATIC POLYURETHANE BINDER IMMEDIATELY PRIOR TO APPLICATION OF WEAR LAYER COLOR #2.

A DEEPENED CONCRETE AT RESILIENT SURFACING - TYPICAL

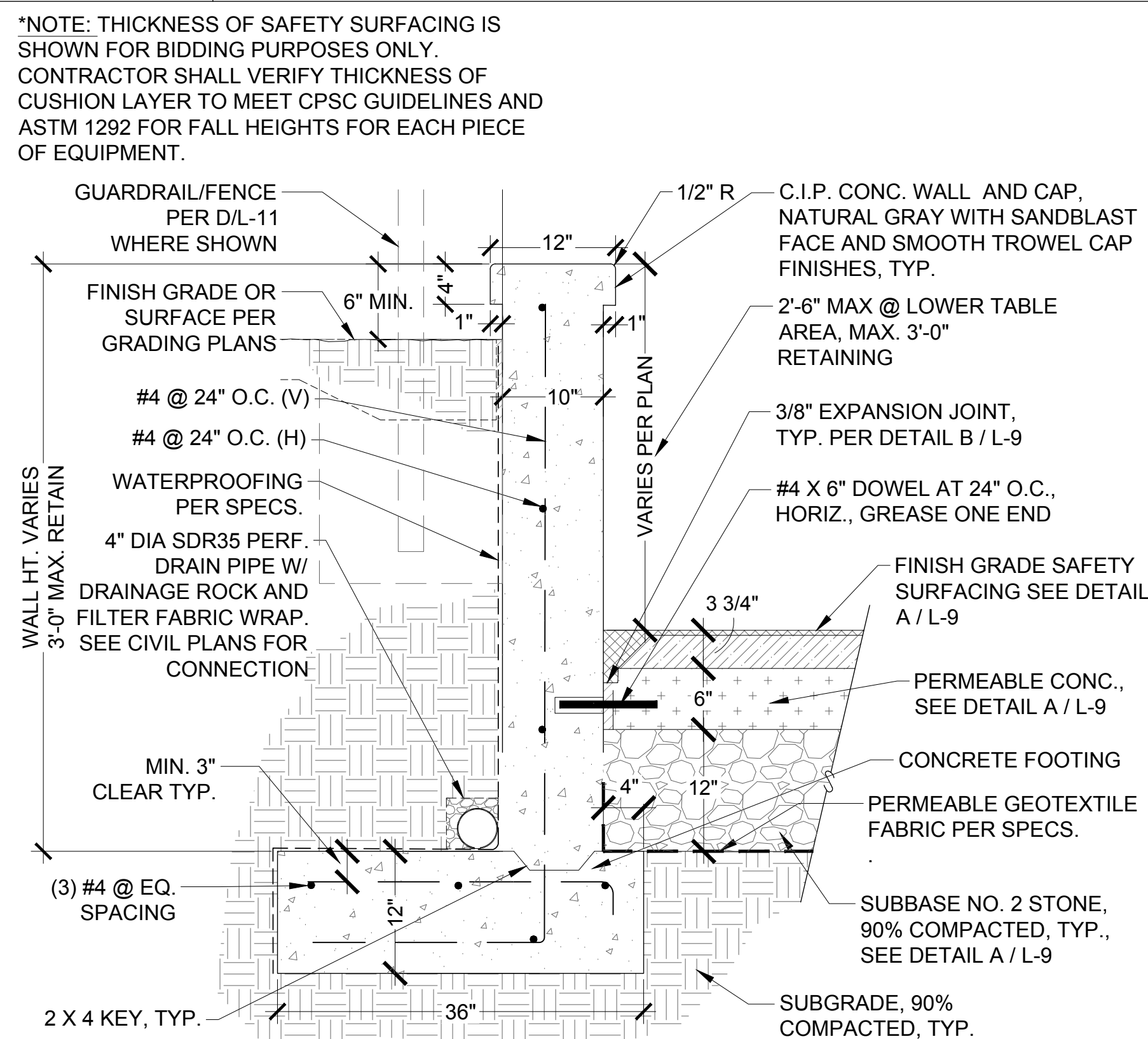
N.T.S.



- NOTES:
1. INSTALL IN ACCORDANCE WITH SDM-117 AND SDM-104 FOR SIGN MOUNTING AND POST.
  2. SIGNS SHALL BE SUBMITTED FOR ADA REVIEW, SHOWING DIRECTION OF PATH.
  3. ACCESSIBLE SIGN SHALL BE INSTALLED 5' AFF WHEN OUTSIDE OF CIRCULATION AREAS.

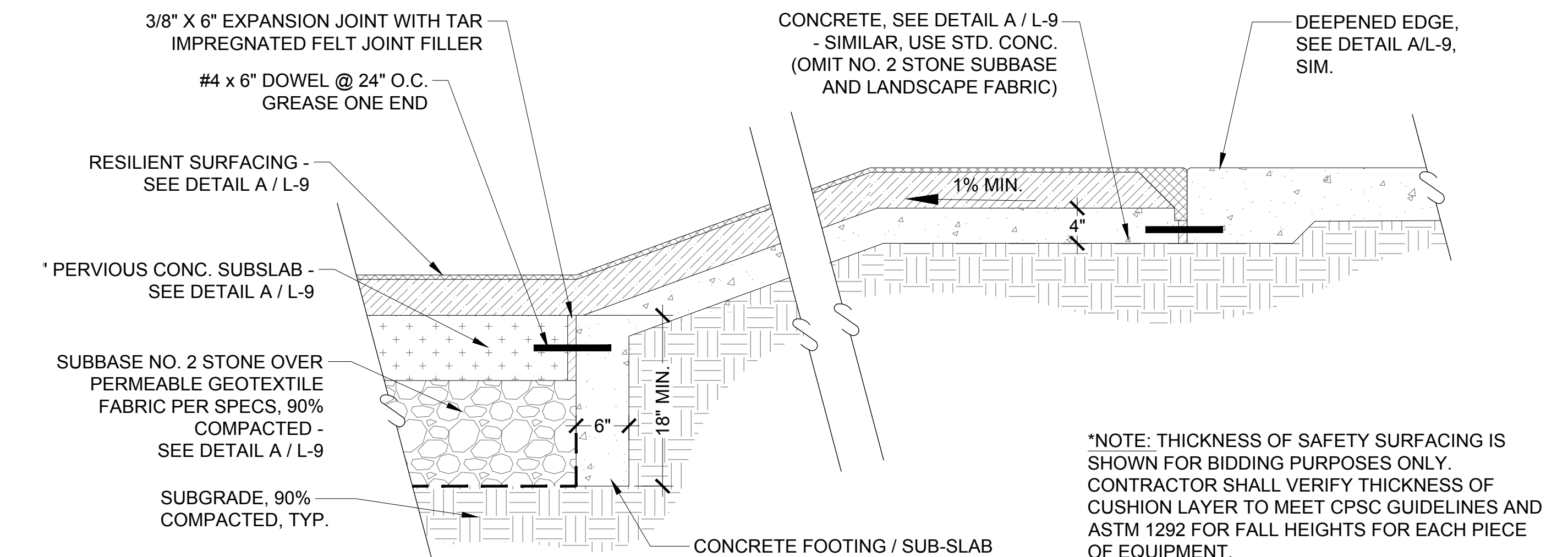
F DIRECTIONAL SIGN AND ACCESSIBLE PARKING SIGN - TYPICAL

N.T.S.



E TYPE "B" WALL - TYPICAL

SCALE: N.T.S.



- \*NOTE: THICKNESS OF SAFETY SURFACING IS SHOWN FOR BIDDING PURPOSES ONLY. CONTRACTOR SHALL VERIFY THICKNESS OF CUSHION LAYER TO MEET CPSC GUIDELINES AND ASTM 1292 FOR FALL HEIGHTS FOR EACH PIECE OF EQUIPMENT.

D PLAY AREA EMBANKMENT

SCALE: N.T.S.

WARNING 0 1/2 1 IF THIS BAR DOES NOT MEASURE 1" THEN DRAWING IS NOT TO SCALE.		PLANS FOR THE CONSTRUCTION OF: JOHN F. KENNEDY NEIGHBORHOOD PARK RESTROOM AND PLAYGROUND IMPROVEMENTS CONSTRUCTION DETAILS	
DEVELOPMENT SERVICES DEPARTMENT SHEET 15 OF 29 SHEETS		WBS NO. B-18005	
FOR CITY APPROVAL		PTS NO. _0650868_	
APPROVED: FOR CITY ENGINEER		DATE: 11/07/2022	
DESCRIPTION ORIGINAL		BY ELP	APPROVED  DATE 11/7/22
AS BUILTS			
CONTRACTOR		DATE STARTED	
INSPECTOR		DATE COMPLETED	
DRAWING NO. 41424- 15 -D		L-9	

## **2021-2022 ASTM F1487 Summary of Standard Updates\***

### ***Definition updates***

- **Banister rail/glider** – a play component with a sloping surface which requires the user to ascend/descend using balance, strength, and physical control.
- **Designated play surface** - any elevated surface for standing, walking, sitting, or climbing, or a flat surface accessible for play by children that measures more than 2.0 in. (51 mm) wide by 2.0 in. (51 mm) long having less than 30° angle from horizontal.
- **Professional judgment** - ability of a qualified person in the field of playgrounds/playground equipment design, use, or operations, to render an opinion, decision, or both, concerning a matter within that field of expertise.
- **Qualified person** - one with current knowledge, training, skill, education, and experience who has successfully demonstrated the ability to solve or resolve problems relating to the subject matter and work through the application of professional judgement.
- **Slide** - a play component with a sloping chute(s) intended to contain the user in a seated position as they descend.
- **Trolley ride (~~track ride definition removed and replaced with trolley ride~~)** - play component designed with a mechanism that travels along a designated path such as a cable or track and whereby the user is suspended from the mechanism.
  - Trolley rides may be level or have a height difference (see Fig. A1.61).
    - Upper body type trolley ride - trolley ride designed to support the user by hands only.
    - Seated type trolley ride - trolley ride designed with a suspended element for sitting or standing.

### ***New sections***

- **Elevated Surfaces** - An elevated surface shall also be considered as a designated play surface if it meets both of the following conditions:
  - A flat surface test device 2.0 in (51 mm) long × 2.0 in (51 mm) wide and constructed of rigid material shall be placed on the surface. If the entire contact face of the test device (including all four corners) connects simultaneously with the elevated surface, the underlying surface shall be considered as flat and accessible.
  - The accessible flat surface shall be less than 30° from horizontal.
  - Exemptions—Portions of equipment located more than 84 in. (2130 mm) above any underlying designated play surface are exempt from the requirements of Section 6.

- Trolley Rides (8.13)
  - Upper Body Type Trolley Rides
    - Upper body type trolley rides shall not be on a playground designated for children less than 5 years of age.
    - The lowest portion of the hand gripping component shall be a minimum of 64 in. (1626 mm) above the protective surfacing when measured in the loaded condition.
    - The maximum height of the hand gripping component shall not exceed 78 in. (1981 mm) above the protective surfacing when the mechanism travels along a track or other rigid designated path.
    - The maximum height of the hand gripping component shall not exceed 96 in. (2438 mm) above the protective surfacing when the mechanism travels along a cable or other non-rigid designated path. This shall be measured in the unloaded condition.
    - The hand gripping component shall comply with 8.3.1.1.
  - Seated Type Trolley Rides
    - Seated type trolley rides shall be located away from other play structures and circulation areas. (Also see 9.4.1.)
    - Seated type trolley rides shall not be attached to a composite play structure.
    - Underseat Clearance—The vertical distance between the underside of the suspended element and the protective surfacing of the use zone shall never be less than 12 in. (305 mm). This shall be measured in the loaded condition.
    - Suspended elements shall be smoothly finished with blunt or rounded edges and shall conform to 6.2.
    - Suspended elements shall not impart a peak acceleration in excess of 100 g and shall have a HIC score not to exceed 500 when tested in accordance with impact attenuation requirements in 8.6.7.
      - If the maximum speed of the user as determined by 8.13.5 exceeds the speed of the suspended element upon striking the test mass when tested to 8.6.7, then the procedure of 8.6.7 shall be modified so the speed of the suspended element upon striking the test mass is greater than or equal to the maximum speed of the user. Examples of modifications to the procedure of 8.6.7 includes, but are not limited to, testing with longer suspension elements or controlling the speed of the suspended element along the designated path upon striking the test mass.
      - Materials subject to loss of impact attenuation shall be addressed by the manufacturer per maintenance requirements found in 13.1.
    - Any part of a suspended element which is a minimum of 84 in. (2134 mm) above the protective surface at its lowest point in use is exempt from the impact requirements.
    - Suspended elements which are loops or rings intended for standing shall not be used.



- Take-off and Landings
  - Landings, including elevated platforms when provided, shall include a clear space with a minimum length of 36 in. (914 mm) and a minimum width of 32 in. (813 mm).
  - Take-off and landings platforms when provided for upper body type trolley rides shall comply with the requirements found in 8.3.4.
  - End stops shall be able to absorb the energy of the trolley mechanism at a speed of 11.5 ft/s (3.5 m/s) when in loaded condition. This test is intended to be performed by the manufacturer or test laboratory under controlled conditions. Field testing is permitted provided it is performed by qualified personnel and all testing criteria for conditions are met. After conducting the test there shall be no visible crack or breakage of any component and no form of permanent deformation of any component that may adversely affect the structural integrity or safe use of the equipment.
- Speed of User
  - The maximum speed of the user shall not exceed a running speed of 16.4 ft/s (5.0 m/s) when tested in accordance with the method for determining speed.
  - For upper body type trolley rides the speed of the user shall not exceed 6.7 ft/s (2.0 m/s) at the landing when tested in accordance with the method for determining speed. For seated type trolley rides the maximum angle attained by the suspended element at the landing area shall not exceed 45°.
  - Trolley rides that travel along a path in a horizontal plane do not need to be tested for speed.
- Method for Determining Speed—This test is intended to be performed by the manufacturer or test laboratory under controlled conditions. Field testing is permitted provided it is performed by qualified personnel and all testing criteria for conditions are met.
  - Load the seat or grip with 330 lb (150 kg) approximately where the user is intended to be positioned.
  - At the take-off location, raise the suspended element along its arc of travel until the suspension element (that is, chain, etc.) forms an angle of 30° from its at-rest position. In circular designs when no specific start or stop is present, the suspended element shall be raised at the highest point of the track or cable.
  - When the suspended element is suspended from chains, etc., some curvature will be produced in the suspending elements. Adjust the seat position to determine the curvature which provides a stable trajectory.
  - Support the element in the raised position that provides release without the application of external forces which would disturb the trajectory of the suspended element. Ensure that the seat and suspending elements are motionless. Release the element so that the assembly travels in a smooth downward arc without any visible oscillations or rotations of the element which would prevent it from determining the maximum speed.



- Measure the maximum speed, or the angle at the landing location of the user load depending on the type of trolley ride.
- Trolley Ride Clearance Zones
  - A clear area, free of equipment, shall surround the trolley path.
    - The clearance zone for upper body type trolley rides shall extend a minimum of 36 in. (914 mm) measured from the centerline of the trolley path throughout the length of travel of the hand gripping component.
    - The clearance zone for seated type trolley rides shall extend a minimum of 48 in. (1219 mm) measured from the centerline of the trolley path. The clearance zone shall extend a horizontal distance of  $Z + 30$  in. (762 mm) from the compressed end stop. When method for determining speed is 0 ft/s prior to the trolley mechanism contacting the end stop, then the clearance zone shall extend to where the user stops.
    - When method for determining speed is greater than 0 ft/s at the landing of seated type trolley rides, components such as handholds and barriers shall not extend above the landing platform and access/egress equipment in the trolley ride clearance zone.
    - Platforms and access/egress equipment in the take off and landing area are exempt from the clearance zone requirements.
  - The center-to-center distance between adjacent designated paths for upper body type trolley rides shall be a minimum of 48 in. (1219 mm).
  - The center-to-center distance between adjacent designated paths for seated type trolley rides shall be a minimum of 80 in. (2032 mm).
  - Any portion of the suspended elements shall not come within 30 in. (762 mm) of any support structure through its dynamic range of motion when measured in the unloaded condition. Take off and landing areas (excluding support structures) are exempt from this requirement.
  - A suspended element shall not come within 60 in. (1524 mm) of an adjacent suspended element through its dynamic range of motion when measured in the unloaded condition.
- Trolley
  - The trolley shall be constructed so that it cannot slip out of place from the cable or track.
  - The trolley shall be designed to minimize any fraying or damage to the cable or track, and maintenance shall be addressed by the manufacturer per requirements found in 13.1.
  - There shall be only one trolley per cable or track.
  - When the rolling portion of the trolley is enclosed within a track, the assembly is exempt from crush and shear requirements.

- Cable

- If cable is used, it shall be designed to withstand six times the calculated load(s) according to the following formula as calculated by a qualified person such as the manufacturer or testing lab:

$$S = \frac{g}{f_{\max}} \left( \frac{Q \times l}{4} + \frac{q \times l^2}{8} \right)$$

where:

S = calculated load in Pounds (lbf) (Newtons (N)),

g = acceleration due to gravity, 32 ft/s<sup>2</sup> (9.81 m/s<sup>2</sup>),

Q = mass of pulley and children [(pulley + 330 lb (150 kg))]\*

l = total cable length from end to end, ft (m),

q = mass of cable, lb/ft (kg/m)\* and

f<sub>max</sub> = sag under load, ft (m).

\*When pounds mass (lb) is used for Q and q, then g = 1 for Eq 1.\*

- If an adjustment mechanism to control the tension of the cable is provided, it shall meet the requirements of 4.2.2.
- Cables or other non-rigid materials used to create the designated path shall be a minimum of 84 in. (2134 mm) above the underlying protective surfacing at any point when measured in the loaded condition.
- Support Structure—The support structure shall be designed to discourage climbing and shall have no designated play surfaces.

- Handgrips

- Hand gripping component that are an enclosed loop made of flexible material shall not tighten around the users arm or hand.
- Handgrips shall be blunt edged and shall have a minimum radius of 0.35 in. (9 mm).

- Fall Height

- The fall height of upper body type trolley rides shall be the distance from the maximum height of the equipment to the protective surface below. Equipment support posts with no designated play surfaces are exempt from this requirement.
- The fall height of seated type trolley rides shall be the distance from the top of the sitting or standing surface to the protective surface below plus 64 in. (1626 mm).
- The fall height shall be determined in the unloaded condition.

- Use Zone
  - The use zone of trolley rides shall be a minimum of 72 in. (1829 mm) in all directions from the equipment. equipment through its dynamic range of motion when measured in the unloaded condition.
  - The use zone of a suspended seat or handle shall extend beyond the pivot point at the compressed end stop a minimum of 72 in. (1829 mm) + Z, where Z equals the distance between the pivot point and the top of the seat or suspended handle when swung to 45° from horizontal.
  - 9.9.3 No other play structure use zone shall overlap the clearance zone of seated type trolley rides.
- Banister Rails/Gliders
  - Banister rails/gliders are not recommended for use by children less than 5 years of age.
  - Hand support shall be provided at the upper entrance to facilitate the transition to or from the component.
  - The banister rail/glider shall provide a means to maintain balance and control during use. This may be accomplished with features to provide hand support or the ability to be straddled by the user's legs.
  - A clear area free of equipment shall surround the banister rail/glider surface. Portions of the hand support at the upper entrance are exempt. The clear area shall extend through the end banister rail/glider exit clearance zone.
  - Banister rails/gliders that possess a change in direction laterally shall not have a slope that exceeds 50°. Any portion less than or equal to 30 in. (762 mm) from the protective surfacing is exempt from the slope requirement.
  - The gliding portion of banister rails/gliders shall be continuous, with no protruding welds, joints, or abrupt changes in direction.
  - The fall height of banister rails/gliders is the highest designated play surface of the component to the protective surface below.
  - The use zone around banister rails/gliders shall conform to the use zone standard for stationary play equipment.
- Appendix (Nonmandatory Information) – Hazard Identification and Risk Assessment (HIRA) - This appendix provides examples and does not endorse any of the products or playground configurations presented. Each organization performing hazard identification and risk assessment should gather their own team, develop and document their own circumstances.

## ***General updates***

- Swinging Gates and Doors—Swinging gates and doors shall meet the requirements for vertical rotating equipment.
- Testing for minimum impact attenuation requirements
  - Laboratory Test Specification is F1292
  - Field Test Specification is F3313
- Owners/Operators Responsibilities
  - The owner/operator or their designated representative shall follow the designer's and manufacturer's instructions and procedures to install all play structures and impact attenuating surfacing in accordance with appropriate standard specification and accessibility where applicable. Prior to the playground's first use, the owner/operator shall obtain written verification from a qualified person that the playground equipment and impact attenuating surfacing have been installed in accordance with the requirements.
- Installers Responsibilities
  - After installation and prior to first use of the playground, the installer of the playground equipment and impact attenuating surfacing shall provide the owner written verification from a qualified person that they have been installed per the designer/manufacturer instructions, plans, and specifications according to the owner's approved plans and purchasing requirements. When the owner/operator installs or oversees a community-built playground equipment and/or impact attenuating surface installation they shall follow the written compliance verification procedure unless the designer, manufacturer, and/or distributor requires some other form of verification from a qualified person.
- Updates to 12.4.1.4
  - Banister Rails/Gliders were added to this section
  - Addition - Where the user load is intended to be distributed along multiple gliding surfaces, then the load shall be evenly distributed along all surfaces

\* **Disclaimer:** This document is for educational purposes created by NRPA to provide a summary overview of the ASTM F1487 updates. This is not an exact duplication of the new ASTM standards and should not be used as such. To purchase the new ASTM 1487-21, please visit the [ASTM Compass website](#) and search for the standard.

Please contact Lamar Lee at [llee@nrpa.org](mailto:llee@nrpa.org), if you have any questions.